

PEMBURY

— brought to you by Pembury Parish Council —

VILLAGE NEWS

Autumn 2017

Issue 171



CONTENTS

Chair's Report	3	Secret Tunnels	29
New Parish Clerk	3	Hospice in the Weald	31
Pembury Bridge Club	4	Gardener's Summer Show	32
A21 – End of the Road	5/7	Apple Day – Pippins Farm	33
Are you Lonely?	9/11	Community Café	34
Cllrs A Partridge/M Hocking	13	Women2Women	34
Pembury People	15/17	RNLI	34
Community Larder	17	Useful Contact Numbers	35
A Place of Grace	19	Online Fault Reporting	35
Remembrance Sunday	21	Recipes	36
Village Quiz	21	Autumn Fayre – RNLI	37
Remembering a Loved One	23	Recorded Crime/Report	38/39
Pembury U3A	25	Civic Amenity Lorry	39
Pembury Society News	26	Who's at your Door?	40
Beginners' Computer Course	26	For your Diary	41
2nd Pembury Rainbows	27	Your Representatives	42
Coffee Shop at the Pavilion	27	Village Organisations	43

PEMBURY VILLAGE NEWS

C/O Parish Council Office, Lower Green Recreation Ground,
Lower Green Road, Pembury, TN2 4DZ.

Distribution enquiries: Deputy Parish Clerk 01892 823193

Email: deputy@pemburypc.kentparishes.gov.uk
www.pemburypc.kentparishes.gov.uk

Pembury Village News is published four times a year by the Parish Council, but the views expressed in the magazine do not necessarily represent official council opinion or policy.

Please note: the Editorial team's decision is final on whether or not to publish any item submitted. They reserve the right to edit (that is to cut, précis, alter, correct grammar and spelling) any item published.

The Editor and Publisher, Pembury Parish Council, are not responsible for any opinions or comments made by contributors or advertisers in the Pembury Village News.

CHAIR'S REPORT - AUTUMN

Thank you to all of you who came and supported Picnic on the Green, I hope you will agree it was a superb afternoon/evening in the sunshine - singing, dancing and, obviously, eating! Our local band are such fantastic musicians and their singer Nell is a class act, a wonderful singer. They have changed their name now to the 'Dirty Nellies' which I hope they will keep as I am getting confused over what to call them but they are a first class band and we are so grateful for their support. The Abba girls (very kindly sponsored by the Camden Arms) did all the hits we know and love and finished off a lovely annual get together. Our M.C. was the multi-talented Patrick Gillan at his very best and he kept it all running beautifully. Many thanks to fellow Councillors who gave their time and enthusiasm to police it, and hopefully enjoyed themselves as well.

It was really interesting to see lots of new families attend this year and I sincerely hope they felt welcomed and enjoyed the afternoon.

As we have dodged the rain and have been going round the village for Pride in Pembury, two things became very apparent; one was the stunning displays of containers/baskets and front gardens which were absolutely amazing, that was a joy; but the downside was awful! The amount of litter in our village is totally disgusting. Why or when

did we ever get into such a state? It is such a shame as it detracts from all the good being done.

The 'Pembury Lass' horse on the Green has caused many people to stop and have a good think about what the Hospice is hoping to achieve with their fundraising. It has proved to be an interesting talking point for the village.

N.B Since I wrote this piece originally, mindless vandals have damaged the horse quite deliberately and it has had to be removed to see if it can be repaired. I am sure the idiots who did this were totally unaware that the CCTV at the top of the Green has captured this on the camera and police are investigating.

As you will probably have seen, the bus we all fought for is running again, looping down to Stonecourt Lane and back up to the top, so please use it as much as possible as it's the passengers that keep these buses viable.

*Kind Regards
June*

New Parish Clerk

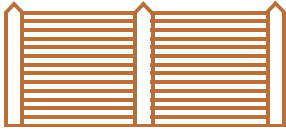
The Council has recently appointed a new clerk, Helen Munro. Helen has over 10 years' experience as a parish clerk having worked at both Kings Hill Parish Council and Offham Parish Council. The Council are delighted to welcome her to the role and wish her great success. Helen is based at the Parish Office in Lower Green Recreation Ground and residents should get in touch if they have any queries, or would like to meet the office team. Office hours are 9am to 3pm Monday to Friday (except Thursdays 9am to 1pm).

COPY DEADLINE FOR NEXT ISSUE

Any news items/articles/photographs for possible inclusion in the next issue of this magazine must be forwarded by 1 NOVEMBER 2017 to the Parish Office, Lower Green Recreation Ground, Lower Green Road, Pembury, TN2 4DZ;
deputy@pemburypc.kentparishes.gov.uk



Steffan Keily



FOR ALL YOUR FENCING REQUIREMENTS

All types of fencing supplied and fitted
Close board, panels, palisade, post & rail, gates

FREE ESTIMATES FULLY INSURED

HOME: (PEMBURY) 01892 520150 MOBILE: 07941 138060

DOWNINGBURY FARM

PEMBURY · NR TUNBRIDGE WELLS · KENT

Support your local farm shop in Pembury



FARM SHOP



**PICK YOUR
OWN FRUIT**



VEG BOXES



**FRESH LOCAL
PRODUCE**



CAFÉ



**BESPOKE
HAMPERS**



**CHRISTMAS
TREES**

01892 824282 - INFO@DOWNINGBURYFARM.CO.UK - DOWNINGBURYFARM.CO.UK

PEMBURY BRIDGE CLUB

Pembury Bridge Club is a members' club which I started 22 years ago!
For many years we have had a waiting list for people waiting to become members, but now numbers have gone down and we are able to invite new members to the club. We cater for all levels of ability from beginners to competent players.

Monday mornings 10am to 12.30pm at Pembury Village Hall for beginners.

Tuesday evenings 7.30pm to 10.30pm at Pembury Village Hall.

Thursday afternoons 1.45pm to 4.45pm at Pembury Cricket Pavilion

For more information contact me, **Geoff Plummer** on **01892 824652**

A21 - END OF THE ROAD

Dualling the A21 between Tonbridge and Pembury had been in the pipeline for over 30 years, with plans and proposals surfacing regularly only to be cancelled or shelved. Meanwhile traffic would crawl around Castle Hill on that old medieval track, the drivers wondering if improvements would ever happen in their lifetimes. On cold, dark winter nights, the prospect of a car journey from Tonbridge to Pembury on modern, fast roads seemed an impossible dream. But eventually somebody got the message, money was found, fairy dust was sprinkled over our corner of Kent and thousands of drivers had hopes of a brighter future.

Many of us locals imagined a fairly simple task of running a bulldozer or two in parallel with the existing road, dropping a few loads of asphalt and the job would be done. It was something of a shock when we saw vast swathes of woodland removed, hills flattened and enough land cleared to build a new airport. Apparently, constructing modern roads is a lot more complicated than the man in the street imagines. Some guidance and education was called for:

On Wednesday 19th March 2017 George Pargeter, Balfour Beatty's A21 Project Director, gave an enlightening presentation to the members of The Pembury Society on the progress of the A21 dualling project. We were told about the complexity of the tasks and shown many photographs taken by the project team. Of particular interest was a time lapse video of the construction of the Longfield Road bridge. Much of that evening's material is now on display on the Pembury History web site.

The new road is 2.5 miles long with two flyover junctions, four balancing ponds for water drainage and a footpath/cycle path known to the builders as a 'Non Motorised Users Route'. It will be possible to walk or cycle from Tonbridge station to Pembury Hospital in relative safety. Further down the A21 there is a new footbridge connecting the parts of Blackhurst Lane severed in 1988 by the old Pembury Bypass. Folk on the west side of the A21 will now be able to walk to the hospital via the footbridge.





Clear professional advice
Cost effective solutions
For all your hedging and tree surgery needs

Nick Winram Tel: 01732 440050
info@treeability.co.uk Mob: 07974 918879
www.treeability.co.uk



clubbercise
BRINGING A NIGHT OUT TO YOUR WORKOUT
CLASSES HELD HERE



Body Conditioning Classes



Exercise classes for all ages and abilities.
Daytime and Evening Classes.
Only £5 a class.

For more information visit:
WWW.PEMBURYFITNESS.CO.UK
Or call Adele on 07876 787869



• Locally based and fully qualified instructor



NEW SERVICE

Deliver myfeed.co.uk

PET & ANIMAL FOOD
Delivered To Your Door

Why shop with us...

- ✓ Huge range of products for all of your pets & animals
- ✓ Free delivery on orders over £25
- ✓ Regular delivery day
- ✓ Friendly & helpful delivery driver
- ✓ No need to be in, items can be left in a safe place
- ✓ Competitive prices on top brands

or visit us to shop
in store at

Broadfeed

6&7 Spa Industrial Park,
Longfield Road, Royal Tunbridge
Wells, Kent TN2 3EN

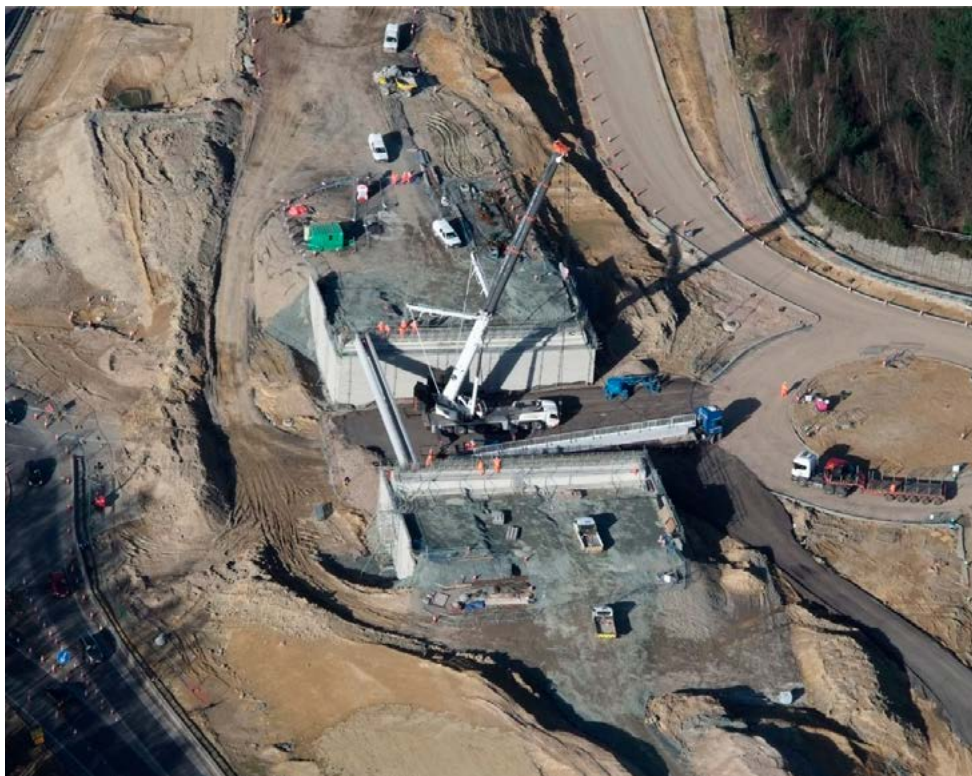
Order online at www.delivermyfeed.co.uk or call us on 01892 515 010. Find us on

A21 - END OF THE ROAD continued...

The cost is somewhere around £67 million. Balfour Beatty had about 240 people working on the project. They moved over 400,000 tonnes of earth, including 35,000 tonnes of contaminated soils, much of which was industrial waste quietly dumped after the second world war. The natural woodland was preserved as much as possible by transplanting trunks, stools and roots, along with their local soil, to fresh pastures. The movement of native soil was important to maintain the complex ecology of the woodland. Bats were provided with tall net corridors to enable them to navigate across the road. A lot was done to protect the wildlife and to re-house bewildered animals, birds and reptiles. A few ancient buildings had to be demolished, but a medieval barn was delicately dismantled for re-assembly at the Weald and Downland Living Museum, near Chichester in Sussex. Progress was delayed a few times because of one very wet winter and the unexpected discovery of Victorian brick kilns that needed archaeological inspection and recording.

Between 2014 and 2017 driving along this stretch of road was slow, sometimes very slow, giving us all ample time to admire the demolition, the equipment, the re-arrangement of the countryside and the construction. Overnight the routes would change and we would be travelling new stretches of carriageway in strange directions, admiring it all from new angles. With the completion of the contract we will settle into a feeling of cosy familiarity. The unchanging landscape will soon look normal and we will forget how it used to be. The Pembury History website has recorded much of the road development and has two web pages of A21 interest – the first, a general history and the second, a compilation of photos and presentation material kindly submitted by Balfour Beatty. Both pages are accessed via the 'Localities' tab at www.pembury.org/history

Tony Nicholls



Kinesiology | Sports Massage

- Kinesiology is a holistic remedial hands on therapy using simple muscle tests to identify body imbalances and gentle techniques to bring the body back to balance.
- Benefits include relief from a wide range of conditions; from neck & back pain, frequent infections and illnesses, weight, hormonal issues, digestion, IBS, stress, fatigue, headaches and more...
- Massage treatments help stretch out the fascia easing tightness and restriction of movement. Releasing soft tissues that are stuck together and feel hard, stiff and sore, easing tension, improving mobility and reducing general aches and pains.
- Appropriate for everyone of any age.

balanced
being

Kinesiology · Nutrition · Massage · Skin Care

Contact: Clare

Tel: 07471 734799

Email: clare@balancedbeingkinesiology.co.uk

WESTWOOD BUILDERS

26 Westway, Pembury, Kent. TN2 4EX

Office 01892 325378 Mobile 07710 895598 E-mail; paulbuild444@gmail.com



Friendly Local Professional Builder, with over thirty years' experience.

Kitchens, Bathrooms, Loft Conversions, Extensions, Design Service Available.

Call for a no obligation quote.

ARE YOU LONELY?

If so, you are not alone

We're living longer, our children are moving further away and that sense of community seems to be a thing of the past, so it's little wonder that over 1,000,000 older people say they feel lonely all or most of the time.

Did you know around 17 per cent of people say that they have not spoken to their neighbours in over a month, 70% are unaware of their neighbours' full names and over a third of people say they would not even recognise their neighbours if they walked past them on the street!

Isolation is not good for you; we're a species that thrives on company. Chronically lonely people have higher blood pressure, are more vulnerable to infection, and are also more likely to develop Alzheimer's disease and dementia. As the health secretary, Jeremy Hunt, has said, loneliness and isolation is as "bad for you" as "smoking 15 cigarettes a day" and "worse than obesity".

So, if you think you might be lonely, it's important you do something about it. Luckily for you, you live in a village with a whole range of activities designed to encourage people to try out new things and socialise. Many people find it quite intimidating to make that first move, especially if you're recently bereaved or have been on your own for a while. So, if you need that initial support to give you the confidence to get out and meet new people, get in touch with Pauline Hawker on 01892 824327, part of the volunteer team at St. Peter's Church. Pauline, or one of her team, will be more than happy to visit you at home and help introduce you to new people and activities that might interest you.

Here are a few ideas to try:

Mondays

- **Community Coffee Shop** - homemade cakes and a warm welcome at The Pavilion on the Recreation Ground from 9.30 until 12.00. Call Chris Snow – 01892 825428
- **Beginners Art Class** – 2nd and 4th Monday of each month (school term time) at Pembury Baptist Church from 11.00 until 3.00 - £1 per person and bring your own equipment. Call Jennifer Roberts on 01892 825590
- **Bereavement Lunch** – (3rd Monday of the month) in The Pavilion on the Recreation Ground from 12.00 to 2.00. A chance to talk to people who understand how you're feeling if you've recently lost someone close and to make new friends. Call Sue Bottle on 07840 361118

Tuesdays

- **Morning Market** – (school term time) stalls & coffee shop at the Village Hall from 9.00 until 11.00. Call Suzanne Leviton on 07927 713256.
- **Tuesday Club** (school term time) – social gathering offering a range of activities from keep fit, dominoes, regular speakers and lunch. 10.00 until 2.00 at the Pembury Baptist Church - £5 per person. Call Jennifer Roberts on 01892 825590.

Wednesdays

- **The Coffee Stop** – St. Peter's Upper Church from 10.45 until 12.00. A very welcoming group where the team will make sure you're introduced to other people. Call Pauline Hawker on 01892 824327

BoogieFit Over 50's!

2017 Is Your Year!

**Join the Fun and Get Fit
Great Music & Fun Atmosphere**

The Over 50's Classes held at:

Matfield V.Hall Tuesdays 9.30am - 10.30am

St Andrews, P.Wood Thursdays 10am - 11am

Pembury V.Hall Wednesdays 9.30am - 10.30am

.....

The Over 65's Class held at:

Matfield V Hall

Tuesdays 10.45am - 11.45am

£6 per session

It's never too late to Get Fitter!!...
So Bite the Bullet



Please call Charlotte Fairs on
01892 890841 or 07887 868438
or email: info@activefuture.co.uk



ARE YOU LONELY? continued...

Other

- **Tesco Cream Tea & Bingo** – from 2pm on 30th August 2017. Call Jane Rabbetts, Tesco's Community Champion on Tel: 07834 998483. Tesco is also hoping to put on more community events so keep an eye open for news.
- **U3A** – check out the classes, which include cribbage, photography, dancing, book club and croquet. Visit the website www.pemburyu3a.org or call Andrew Richardson on 01892 824012.
- **Out and About Club** – give Pauline Hawker a call on 01892 824327 and book yourself on the next coach trip. The club organises five trips a year to places such as Heaven Farm on the Ashdown Forest, Thames River Cruise on the Pocahontas, Pevensey lunch, Newhaven tea and a Christmas Lunch at Hever Castle & tour. Costs are kept to a minimum so everyone can enjoy.

Cllr Mrs Louise Mills

Phil's Kitchens



No need to change your whole kitchen.... Just do a kitchen refurb!

- Replace worktops with high quality German worktops (many colours to choose from)
- Replace your sink/hobs/oven/ washing machine, dishwasher, cabinets, doors and handles
- Gas/Electric/Plumbing compliant
- Many happy customers in and around Tunbridge Wells

Phone Phil 07773723646

BLADrunners

HAIR

- ✓ Wella Master colour award salon
- ✓ Experienced staff Vidal Sassoon trained.
- ✓ Loyalty cards
- ✓ Student and senior citizens discounts.
- ✓ Great Lengths hair extensions.
- ✓ Wedding hair and photography packages



Check our website & app for monthly offers.

Tel: 01892 824420

www.bladerunners2.co.uk

43 Hastings Road,
Pembury, Kent TN2 4PB



Scruffy Paws

For all your dog's needs

Services Offered:
Dematting, bathing and grooming
Dog Walking
Pet Sitting

sinclairh@me.com
07739 184992



Call or email for prices and to discuss your personal requirements

PEMBURY BASED



Dawn Hodgson

MSSCh MBChA

Chiropodist

HCPC Registered - Home Visits

- Police Checked
- Professional Advice and Friendly Care
- Diabetic Assessment & Maintenance
- Verruca Treatment
- Ingrowing Toenail Care
- Treatment for Fungal Infections
- Day & Evening Appointments Available
- Discounts for Over 70's
- Simply Health 50% Refund

7 Greenleas, Pembury Tunbridge Wells, Kent. TN2 4NS

Mobile: 07761 583756

Telephone: 01892 824916

Email: dawn756@live.com



LAMBERHURST GOLF CLUB

Where a warm welcome awaits you

**Come play our beautiful parkland 18 hole course
and enjoy a special day with us.....**

Visitors & Society Bookings Welcome
Also A Range Of Membership
Options Available



www.lamberhurstgolfclub.com | 01892 890591 | Church Road Lamberhurst Kent TN3 8DT

CLLR ANNIE PARTRIDGE

I was born in the old Pembury hospital and spent my childhood years in the Tonbridge area where my family lived and worked.

As an adult and, after a period in banking, I trained to be a valuer of commercial businesses, specialising in pubs and hotels. My area was Sussex and West Kent so my claim to fame was that I had been inside virtually every freehouse in the area over a 20 year period. Later in my career, I moved to London and worked for a large property company and I moved back to Pembury with my husband in 2013.

I have a wide range of interests ranging from re-upholstery to cocktail making, theatre to car boot sales and many more.

I have always loved to travel and have been a passionate scuba diver for 30 years, during which time I have been lucky enough to have visited many far flung and remote places in pursuit of my hobby.

I enjoy spending time in my garden and was delighted to come runner up in the Pride in Pembury front gardens competition in 2015, going on to win first prize in 2016. It was this connection with the Parish Council that made me aware of the hard work which goes on behind the scenes to make Pembury the safe, friendly and socially active village it is today. I was honoured when my application to become a Councillor was accepted, although it does, of course, prohibit me from being considered again in the gardens competition!

Being a Parish Councillor is a voluntary, non political position, and I look forward to giving whatever support I can as an enthusiastic, active member.



CLLR MICHAEL HOCKING

Coming from Cornish parents, I was raised and educated in Cornwall. On leaving school I decided to follow in my father's footsteps and join the medical branch of the Royal Navy, which I thoroughly enjoyed for ten years until family commitments brought me back to Cornwall and, after retraining, I spent many years in the motor trade.

Following a marriage break up, I looked for a new direction in life and, having a comprehensive experience of welding, I gained employment with a Cornish firm specialising in designing and manufacturing farm machinery for UK and export sales. This led to my holding a senior position for many years until my wife (from my second marriage) and I decided to have an adventure in our advancing years and migrate from Cornwall to Kent. This 'adventure' involved close family living currently in Kent encouraging us to join them and their young family.

Since taking this great step, some seven years ago, with both of us giving up good positions of employment within Cornwall and venturing

into the unknown, (admittedly partly to join other close family members already here), we feel we have really settled and are thoroughly enjoying our new life in Kent and would like to thank everyone for their very warm welcome.

Mike has taken a special interest in the allotments (being an allotment holder himself) and has been instrumental in the formation of a small group of tenants who are striving to tidy the site up and to encourage more people to grow their own. The cost of a half plot is £18 per year and the rewards can be immense. If interested please contact the Parish Office 01892 823193/deputy@pemburypc.kentparishes.gov.uk



Ed

PEMBURY AUTO CENTRE
WWW.PEMBURYAUTOCENTRE.CO.UK

MOTs
Servicing
Tyres and batteries
Brakes, clutches and exhausts
Air con service and regassing
FREE collection and delivery
FREE courtesy cars available
Selection of quality used cars for sale

01892 824646
Servicing and repairs on
ALL makes and models

*** HALF PRICE SPECIAL OFFER ***

Comprehensive vehicle health check and report –
only £19.95 all inc. Quote PVN001



RAC Approved Repairer

T: 01892 824646

E: info@pemburyautocentre.co.uk

68 High Street, Pembury, TN2 4NG

(Next to the Texaco filling station, 1 minute from Pembury Hospital)

PEMBURY PEOPLE - John and Pauline Hawker

This month John and Pauline Hawker share the story of their life in the Village.

Along with many other young couples, John and Pauline Hawker came to Pembury in the mid 70's and, with two young sons, Matthew and Stephen, moved into Highfield Close. John had been posted to a new job with the Milk Marketing Board at the Milk Records Office in Tunbridge Wells.

They joined St. Peter's Upper Church and Pauline quickly became immersed in Church activities and before long, was appointed Secretary to the Parochial Church Council, a post she has held several times over the years. Looking around for part-time work, Pauline decided to put her youth work qualifications to the test and was soon recruited to run a new youth group in Five Oak Green for two evenings a week.

As a reactionary (West Country) Liberal, John headed off to the local Liberal Party and found a vibrant, energetic assortment of characters, who for a time succeeded in changing the political landscape. Sport had also played a big part in John's life, and although pressures of family life were building, he spotted an opportunity when the Football Club were turfed off the Recreation Ground for digging up the pitch with their sliding tackles. Would the Parish Council allow Hockey to be played instead? They would, and did, for the next 20 years. Steve Bristow and James Whitehorn helped establish the Club. Many youngsters were introduced to the game and a number went on to play for well known clubs.

Third son Andrew arrived in 1981, which prompted a move to a larger house in Heskett Park, where they struggled to balance a growing number of interests and commitments. Pauline, continuing her interest in youth work, became involved in a committee that managed, after numerous trials and tribulations, to secure a building on the Woodside playing field. This building was a redundant wooden hut from Pembury Hospital which was dismantled and re-erected by ex-offenders under the key training scheme. Pauline subsequently ran a number of youth groups there, and with a team of volunteers on Friday evenings gathered in nearly one hundred youngsters aged

8-13. The project was eventually taken over by the YMCA and continued successfully for a number of years, until decline set in and the building fell into disuse and was dismantled.

School was now proving more important to family life and all three sons flourished at Pembury School – Pembury's crown jewel. A toddler group at the Catholic Church had provided the opportunity to join a babysitting group, which is where their first, long-standing Pembury friends were made. The boys joined the cubs and Pauline helped out as an assistant. John had by now teamed up with Jane Stuart Robson and others in helping to form Pembury Players and soon became involved in productions. When he also joined the Parish Council there was the inevitable car crash- when he and Pauline met at the door, each expecting the other to look after the boys. Fortunately the boys soon learned to look after themselves.





AMB KITCHENS
AND CARPENTRY

- QUALITY KITCHENS
- RELIABLE SERVICE
- QUALIFIED TRADESMAN
- FIT ONLY SERVICE AVAILABLE
- FAMILY RUN BUSINESS
- FREE QUOTATIONS

For advice and a
no obligation quote

Please call: 01892 722170
Mobile: 07746586949

or send us your enquiry to
andybrush@ambcarpentry.net

A QUICK FIX FOR 2017 KETTLECISE

EASY ACTION. GOOD MUSIC . GREAT WORKOUT!!

FREE TRIAL SESSION!

(Must Book as limited places)

From £6 a session

**MONDAYS AT PEMBURY
VILLAGE HALL -
AM 9.15am - 10am**

**MONDAYS AT PUTLANDS
7.00pm - 7.45pm**

**THURSDAYS AT BRENCHLEY
MEMORIAL HALL
7.15pm - 8pm**



call Charlotte Fairs

01892 890 841 or 07887 868438 or Email: info@activefuture.co.uk



PEMBURY PEOPLE - John and Pauline Hawker continued...

Education again stepped in- the boys moved to Secondary school and two to University – and Pauline became a School Secretary, training on financial management systems, when schools began to manage their own finances. In later years she worked as Finance Manager for three different charities. Around this time Pauline also participated in a five year theological and pastoral training programme to become licensed to St. Peter's Church as Pastoral Assistant.

John's career meanwhile was sinking: the introduction of milk quotas in 1984 had holed the MMB below the milk line and the consequent decline in dairy farming, particularly in the South East, brought an end in 1994 to John's agricultural journey and the beginning of another - in Education. Having re-trained as a teacher, John taught science at Mascalls for six years, before moving on to the Tonbridge Youth Offending Team, where he worked with young people struggling to cope with Education and much else. For some years John was a member, then Chairman of the Village Hall Committee. Now in retirement he enjoys competing with the pigeons on his allotment!

Never one to let the grass grow...Pauline gave constructive thought to retirement activities...and came up with the idea of Pembury's own U3A, a self-help learning organisation for retired and semi-retired people. Soon finding like-minds around the village, a steering committee was formed and Pembury U3A was launched. Now with 300+ members, Pembury U3A is celebrating its 10th Anniversary and has 60 interest groups, all run by members. Both continue to be active members, enjoying the diversity and opportunities it offers.

Over the years, Pauline and John have explored many parts of Britain. They like canal boating and walking holidays and have tackled the West Highland Way, part of the Cornish and Pembrokeshire coast path, as well as some tough walking in New Zealand, Spain and Tuscany. Visits to John's native Somerset and Pauline's Worcestershire (John calls her his Worcestershire Sauce!), together with trips to see family and grandchildren in Norfolk, all make for regular changes in scenery. They firmly believe that being involved gives back far more than is given. The value of the friendships they have made over the years, and the pleasure of living in Pembury and feeling part of the community cannot be measured.

Thank you to John and Pauline for sharing their stories.

They have both played an active and fruitful part in village activities.

Richard Snow

COMMUNITY LARDER

Pembury Community Larder is based at Pembury Baptist Church and holds non-perishable food items donated by the congregations of St Anselms, St. Peter's, Pembury Baptist Church, Tesco and Bushcraft Company (at Penshurst Place). If you know someone who needs help with food, or it is you who is in need, please do not hesitate to contact Jennifer on 01892 825590.

Food can be collected or, in some cases, can be delivered.



Leaflets | Programmes | Posters
Booklets | Wedding Stationery | Calendars
Business Stationery | Yearbooks | Brochures

Established for over 20 years, we are a family run printing company based in Pembury.
 We have experience of working with small and medium sized businesses working within
 predefined budgets and offering a complete service from design to print if required,
 and 10 years experience of producing Funeral Service Sheets to Funeral Directors and Families.

We also produce exclusive car prints in conjunction with KAR-ART.

COMPOSING OPERATIONS LTD

PRE-PRESS • PRINTING • FINISHING • DOCUMENT MANAGEMENT

T: 01892 823988

E: compops@btconnect.com W: www.composingoperations.co.uk



Pembury, Kent

personal touch computers

www.pt-c.co.uk

networking



Home and business IT

Up front costs, no unexpected hourly fees

security



Laptops/custom PCs

Wireless / ADSL / CABLE installs, helpful advice

reinstallation



Callouts available

Business hours / evenings and weekends

upgrades

Aaron Taylor 07545 996 410

email – aaron@pt-c.co.uk

PC/server builds

repairs

THE JEFFREY HALE AWARD FOR SCHOOLS

A Place of Grace

We were invited by the Friends of Woodbury Park Cemetery to take part in the Jeffrey Hale award for local primary schools.

Jeffrey Hale was a Victorian philanthropist who had a special interest in children's education and the health and wellbeing of the less fortunate in life.

We were invited to visit Woodbury Park Cemetery and prepare a multi-media collage with the theme 'A Place of Grace.' We took photographs and collected seeds, leaves, twigs and other materials to create our collage.

We talked about the cemetery and Jeffrey Hale and what thoughts we had for an appropriate design. We decided on a Guardian Angel to watch over the people who are buried there.

We cut out Angel wings from exterior plywood and each child made a feather with the materials

they had collected and added them to the collage. Some of the feathers included names of people buried in the cemetery and also the trees growing there. We wrote a number of poems on the feathers too. We were inspired by the beauty and tranquillity and indeed how graceful it is. The Friends of Woodbury Park Cemetery visited our school and judged our collage and then we were invited to the award ceremony at The Camden Centre Tunbridge Wells where the children from the gardening club spoke about their inspiration in making the wings. Pembury School Gardening Club won first prize and were presented with a cheque for £500 from the Jeffrey Hale Foundation and a beautiful shield from The Friends of Woodbury Park Cemetery by the Mayor of Tunbridge Wells, Councillor Julia Soyke.

Pembury Primary School Gardening Club





Earn Extra Money as a Host Family

We are looking for friendly people in

PEMBURY and TUNBRIDGE WELLS

to accommodate short stay (3 - 4 nights) European students

Families can host 2 or 3 students

Out all day - no weekends

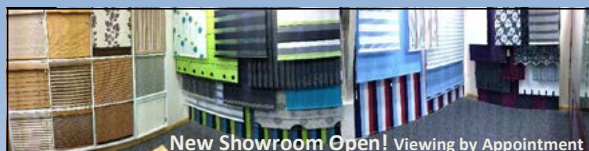
Earn up to £186 per stay

(or MORE, if hosting TEACHERS)

Pick up/drop off points –

TESCO PEMBURY or TUNBRIDGE WELLS ST JOHN'S SPORTS CENTRE

For further details please contact **Mrs Emilia Sanders** on **01892 549 880**



New Showroom Open! Viewing by Appointment



THE BEST KEPT SECRET IN PEMBURY!

Penumbra Blinds have been Manufacturing & Supplying Internal Window Blinds & Curtains, External Awnings and Canopies to residential and commercial customers from our facilities on Romford Road since 1991!

Your truly local company for any of the following:-

- ◆ All types of Internal Blinds including the new Vision™ roller blind system
- ◆ External Blinds, Awnings, Canopies & Gazebos
- ◆ Solar Control & Security Window Films
- ◆ Friendly Service
- ◆ Expert Advice
- ◆ No Pressure Sales!

Visit us at the far end of Romford Road and find out why we've been here so long!



Tel: 01892 825522 E-mail: info@penumbrablinds.com

www.penumbrablinds.com

Unit 2 Albans Farm, Romford Road, Pembury, Tunbridge Wells TN2 4BB



REMEMBRANCE SERVICE

SUNDAY 12 NOVEMBER 2017

The Annual Remembrance Parade and Service will be held on Sunday 12 November at 10.45am in St. Peter's Upper Church, Hastings Road, Pembury.

Following the service wreath laying will take place at the War Memorial.



VILLAGE QUIZ 2017

With a total of 21 teams competing, the Pembury Village Quiz 2017 was a close run event.

With questions on subjects ranging from geography, tv and films, words made from elements on the periodic table and musical intros, our question master Keith Merrin tested the knowledge of everyone there. Once again a huge 'thank you' to Keith, and David who did the scores on the computer.

The winners were 'Up the Aged!' representing the U3A, with a score of 195 points. They were pushed all the way by 2016 winners 'Been There' who finished with 194.5 points and Dipstix with 193.5.

'Up the Aged!' were presented with the Parish Council Cup by Cllr Mrs June Crowhurst, Chair of the Parish Council, and a cheque for £300 to donate to a charity of their choice. 'Stephen's Crew' won the wooden spoon, and we would love

to see them back next year to improve their final placing!

We would like to thank all the leaders who came to help run the quiz, which raised £589 for Pembury Scouts and Guides. The money will go towards the upkeep of their hall. With over 200 children using the hall each week there is always plenty to do!

Maira Allan





PEMBURY ANNUAL FIREWORK DISPLAY

Lower Green Recreation Ground

Organised by Pembury Parish Council

FREE ENTRY - Retiring
Collection

Gates open at 6:30pm

Display starts at 7:30pm

**FRIDAY 3RD
NOVEMBER
2017**

REMEMBERING A LOVED ONE

New Memorial Wall at Pembury Burial Ground

Pembury Parish Council has recently had a memorial wall built at the far end of the Burial Ground behind St. Peter's Church. A lot of research was done and a visit to Rotherfield Burial Ground encouraged the Parish Council members to commission its own wall. I'm sure you will agree that it has been sympathetically and beautifully constructed.

The cost of a plaque will be £100 or £150 for a plaque with a photo insert. (This is if the deceased was a resident of Pembury). Please contact the Parish Council Office for more details on 01892 823193. We have already placed the first orders for these and are really hoping that this area will offer a quiet place for reflection and thought.

Notcutts very kindly gave us some invaluable advice about which plants would be appropriate for the area and also donated some membrane, gravel and the shrubs which have since been planted in front of the wall. We are very grateful to them for this.

Before long, a bench – donated by the Pembury Society – will be installed nearby. The Parish Council would like to thank the Pembury Society for thoughtfully providing the funds for the bench.

Ed.





Fed up with longstanding verrucas and warts ?

Call Kevin Norman Chiroprody/Podiatry on

01892 822855 or 07901922901

for an appointment to discuss the latest pioneering
Swift microwave and verruca wart treatment.

Alternatively you can contact me by email: pemburypodiatry@gmail.com

Why not check out the Swift website www.treatwithswift.com for more details.

General Chiroprody/podiatry also available.



**The Reliable and Professional Service with the
Personal Touch**

Caroline Milwidsky

**Accounting Bookkeeping Payroll and PAYE National Insurance Self Assessment
RTI Compliance Management Accounts Corporation Tax Budgets and cash flows VAT**

???? How much time do you spend on your accounts rather than running your business ????

Not only can we prepare your annual accounts and deal with the tax, but we can also help on a day by day,
week by week, monthly or quarterly basis.

Our clients include Self Employed Sole Traders and Limited Companies across a wide
and varied range of businesses.

Contact: Caroline Milwidsky Tel: 01892 891220 - Mob: 07885 249968

Email: c.milwidsky@btconnect.com

As I have been reminding everyone for some while, the past year has been the 10th anniversary of the time when our U3A was founded and we have been celebrating that in a number of ways in recent months.

Firstly, back in April there was a very successful Art exhibition in the Baptist Church where all the works on display were created by members of our various art and painting interest groups and many of those works were for sale. The exhibition attracted a lot of interest from visitors and it was especially pleasing to our members to find that many visitors were so taken with the artworks that they bought one!

Secondly, a Patchwork/Quilting Workshop was held in the Village Hall in July not only to show off our members' handiwork but to make incubator covers for use in the Pembury Hospital's special care baby unit, colostomy bag covers and heart shaped cushions for use by those recovering from breast cancer.

Thirdly, and also in July, we had our AGM when we celebrated the occasion with a Review of the Year photographic presentation, a performance by members of our Ukulele Group, and we enjoyed an amazing cake created by our members showing in sugar-crafted cartouches all the activities of our many Interest Groups.

Fourthly, and inspired by an idea from our U3A Newsletter Editor John Smith, some of our members have clubbed together to start providing regular funds for a Nepalese boy and his school via ActionAid.

Lastly, and to show that we like to have fun (as well as doing good works), in August we held a Dance in a Barn featuring the Jean Bentley Dance Band playing jazz and swing – and that was an event free to all our members.

So it has been an eventful 10th anniversary year and we will continue in 2017-18 to provide activities to cater for a wide range of interests

(including languages, sports, arts and crafts, and play reading) as well as social events. If you are interested in joining our U3A (whose main purpose is the education of those no longer in full time paid employment or having parental responsibility), you can join at any time – for more information please go to our website www.pemburyu3a.org or contact our membership secretary Andrew Richardson on 01892 824012.

*Roger Gardner
Chairman*



PEMBURY SOCIETY NEWS

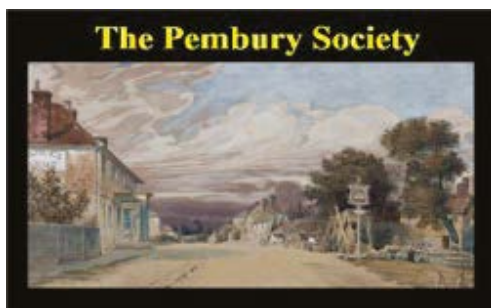
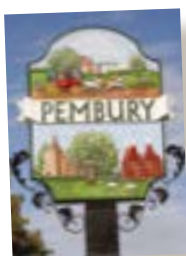
The Autumn meeting of the Society is on Wednesday 18th October, 7.45pm at St. Peter's Upper Church, when the focus is on the Strategic Plans for Tunbridge Wells and surrounds, thinking about the changing face of the town and the Local Plan, with our guest speakers being the leader of Tunbridge Wells Borough Council, Cllr David Jukes with Cllr Alan McDermott, Portfolio Holder for Planning.

It will be good to hear the latest news concerning the proposed new Town Hall, and Assembly Hall complex, the old cinema site, and importantly for Pembury residents the likely impact of the Local Plan on housing developments in our area.

All members and new members are welcome to attend, and this will include the AGM and our usual Q & A time. I look forward to seeing you on 18th October.

By the time this PVN comes through your letterbox, a new bench 'for the people of Pembury' should be installed by the new memorial wall in the Pembury Burial Ground, which we have been pleased to fund as a gift of the Pembury Society.

David Hanes



BEGINNERS COMPUTER COURSE

Pembury Baptist Church and Kent College have liaised to provide a Beginners Computer Course, starting again in September 2017 on Thursday mornings in term time. We are picked up by minibus from Pembury Baptist Church at 10am and returned back by 11.30am.

If you really would like to learn how to turn on a computer, and use it successfully step by step without any pressure, or if you'd just like a refresher course, please contact Jennifer on 01892 825590 for more information.



2ND PEMBURY RAINBOWS

The Rainbows are currently enjoying their Summer Holiday, but I hope, like me, they will still be remembering all the fun things we have taken part in over the last few months. We always try to achieve a varied, challenging and super-fun programme for the girls - this past term, we enjoyed two very informative visits from opposite ends of the spectrum: a local beekeeper brought a transportable hive to the HQ and, along with a fascinating chat about bees, showed the girls how to make pipe cleaner bees and roll their own candles. Then we had a representative of Kent Search and Rescue, who chatted to the girls about their voluntary work and posed observational tests for the Rainbows, as well as getting them to make a weather-proof forensic cover for a piece of evidence.

A large group of 2nd Pembury Rainbows went on a day trip to Hastings in the May half term holiday. An exciting adventure started with a train trip down to the Coast. We visited the RNLI Lifeboat Station and took a ride up the East Cliff Railway,

where we had lunch at the top. We enjoyed the wonderful view and sang songs, played games and had ice cream! On our descent, we spent a bit of time on the beach before having a fantastic visit to the Blue Reef Aquarium, then a train trip home.

In July, we continued our celebrations for Rainbows' 30th Birthday, with a 'Pootle and Picnic' - a lovely walk out through Snipe's Wood in Pembury, to Cinderhill Community Woodland on the edge of Matfield. The girls identified leaves from trees and spotted many wild flowers. We had our lunch by the Wooden Snake, enjoying the spectacular views. Before our return walk home, the girls created woodland animal collages from found items. They all deservedly earned their 'In the Woods - Growing Up Wild' badge.

Amanda Baker
2nd Pembury Rainbows
07812562814



COFFEE SHOP AT THE PAVILION

Our coffee shop continues to go from strength to strength as we look forward to celebrating our third year anniversary in October. So far this year we have hosted Marie Curie and Alzheimer's Society fundraising mornings, donating over £420 to charity, thanks to the support from all our lovely customers.

On 31 July we said farewell to Ada, one of our longstanding volunteers, wishing her and her husband good luck with their new venture.

If you would like to become a volunteer please do come and join us or just drop in for tea, coffee, homemade cakes and a friendly chat. We are open from 9.30am until 12 noon every Monday (except Bank Holidays).

For any enquiries please telephone Chris Snow 01892 825428 or Heather Purdy 01892 824940.



COMPUTER REPAIRS

HOME PC'S • LAPTOPS • SERVERS
INSTALLATIONS • MAINTENANCE • BUSINESS NETWORKS

Free estimates provided within 24 hours.
Recently moved to new workshops in PEMBURY.
Ring or call in to discuss your requirements.



- MG Computer Services -

"A reputable company established in 1982 with experienced staff"

145B Hastings Road - Pembury - 01892 826130

R Goode Plastering

All plastering & Rendering works

15 years experience Contact for free
quote



1 Herons Way
Pembury TN2 4DH

Tel: 01892 319853 Mobile: 07900 907445
E-Mail: rgoodeplastering@hotmail.co.uk

Walker Electrical

Domestic Electrical Contractor

ELECSA/Part P Registered

Fully Insured



For a FREE quotation call Neil

07717 170221

SECRET TUNNELS

In our youth we used to walk miles but one of the places we used to visit centred around the Waterworks and Redwings Lane. Pembury Waterworks was one of the three biggest employers in the village, the others being Pembury Hospital and GS Sturgeons. There were obviously seasonal employers in the farming industry with fruit picking at Lamonts, ie Stonecourt Lane etc. The waterworks had many staff involved in all sorts of activities, those feeding coal into the big furnaces to drive the big steam pumps to pump the water to Tunbridge Wells. Other staff would walk the woods between Pembury and Matfield making sure that the streams that fed the Waterworks were not blocked or contaminated and so on.

We had two areas of fun regarding the Waterworks. What most people don't realise is that at the bottom of the hill from Pembury there is quite a large stream on the left which flows out of the wood then disappears underground. That stream goes into a tunnel which flows right under the reservoir and comes out the other side along Redwings Lane. We made several ventures into that tunnel but never went past halfway because it was in total darkness.

The other area of adventure was in a tunnel that carries a miniature railway track which runs in a tunnel from inside the waterworks property in Redwings Lane and out under Downingbury Farm Orchards under the A228 road to Colts Hill and emerges in a cutting in Pippins Farm which

can be seen from Public Footpath WT215. We never entered the tunnel at Pippins Farm end but both gates used to be locked anyway. Inside the tunnel was a raised concrete track about two feet six inches wide and it was about two feet above the water which used to run down the left hand side. On the track were two flat trolleys about six feet long with four metal wheels which allowed the trolley to run safely on the track whilst Mr Fenner and Mr Figgett used to push themselves along checking the water mains.

We overcame the problem of the locked gate when we found that by giving the lock a sharp tap with a bit of sand stone the lock would spring open. We only ever went there in the evening when most of the Waterworks staff had gone home. We used to take it in turns to sit on the trolley whilst others pushed. The other end of the tunnel was not visible to start with and as it got darker a small pinprick of light could be seen at the other end. The braver we got the further we went until one day, in virtual complete darkness we all ended up in the water. We had no idea that there was a gap of about twenty feet in the middle where there was no track!! We all got totally soaked but even worse was the effort needed to get the trolleys back onto the tracks.....! We never ever got caught in there thankfully. More next time.

We have map records of the tunnel from Pippins Farm to Redwings Lane in existence going back to 1890s.

Hugh Boorman





We open doors for you...

01892 822880 | www.bkestateagents.com

BarnesKingsnorth



Pembury Dental Surgery

- New Patients Welcome
- Children seen under NHS
- Full range of preventative treatments
- Cosmetic dentistry (veneers, crown & bridgework)
- Tooth Whitening
- Implant Dentistry
- Digital x-ray
- Direct access to Hygienist
- Relaxing, friendly environment

Dr.Nelis du Plessis B.Ch.D.(Pret)
Katharine Brice Hygienist

Address: 67 Hastings Road, Pembury, Tunbridge Wells, Kent, TN2 4JS
Tel: 01892 823044 - Email: info@pemburydentalsurgery.co.uk
Web: www.pemburydentalsurgery.co.uk

Committed to Quality Dentistry



Community Choir

WINTER WALTZ

A concert of variety and other entertainments

On 25 November 2017 the Hospice in the Weald Community Choir will serve up a flurry of good music and other entertainments at the Hospice in the Weald in Maidstone Road, Pembury.

Tickets cost **£5** per person

You may buy them online or register an interest today by contacting **Hannah Bruce** via www.hospiceintheweald.org.uk

phone - 01892 820558
- email hannah.bruce@hospiceintheweald.org.uk

Doors open at 7.30 pm
Concert starts at 8 pm

Homemade refreshments will be available and we will be having another of our famous raffles!



All proceeds from this event go to the Hospice in the Weald
Registered Charity Number 280276



The Community Choir was the brain child of Kylie Ferris the Music Therapist at the Hospice in the Weald in 2013. For the taster session on 21 May that year 60 enthusiastic people bowled along to see what it was all about. The idea was not just to benefit the patients, but their families and carers, staff volunteers and anyone in the community who wanted to sing. After the first taster session 40 people signed up to join the choir and from the first rehearsal on 4 June the choir produced a really great sound.

Since then we have taken part in many Hospice events and held a few of our own. All the money we raise, on average about £3,000 per annum, goes to the Hospice alone as they are dependent on the generous support of the community they serve in order to provide vital services for patients, their families, and carers.

Come and sing with us and join our happy group.

No auditions necessary; the only prerequisite is a desire to sing and have fun. Everyone is welcome but we are particularly looking for tenors and basses at this time. We rehearse fortnightly on a Tuesday evening, 6.30 to 8 pm. This year we are working on three performances, a Pembury Choirs Thanksgiving Service on 30 September, the Mary Rose Cantata at New Beacon School in Sevenoaks on 13 October and our own concert, this year entitled Winter Waltz, on 25 November.

Upcoming rehearsal dates:

5 September 2017
19 September 2017

3 October 2017
10 October 2017

24 October 2017
7 November 2017

☎ 01892 820558 ✉ hannah.bruce@hospiceintheweald.org.uk

PEMBURY GARDENERS' SUMMER SHOW

Any concerns the gardeners had on the effects the continuing heatwave and drought might have on entries in their summer show were soon dispelled on the day.

Roses, in particular, had seemingly enjoyed the conditions and, although Sweet Peas prefer much cooler conditions, exhibitors managed to stage twenty vases – the most for some years.

The usual high standard from the Floral Art ladies was maintained and together with other flowers, pot plants, cookery, vegetables and handicraft made up a very satisfactory show – enabling the show co-ordinator, Brian Fryer to say “We can be proud of that”.

Selected show results:

Sweet Peas

National Sweet Pea certificate and medal ~
Doug Drury

Best vase in show –Var. ‘Bristol’ ~ Doug Drury

Floral Art

Helen Reeve Cup

Certificate and rosette for best exhibit ~ Brenda Penfold

Roses

Cup and certificate with rosette for best in show ~ Steve Jones

Cookery

Cup and certificate for most points ~ Jean Aust

Vegetables

Cup and most points certificate ~ Brian Fryer

Handicraft

Mary Standen Award most points ~ Jean Aust



Kent County Show 2017

At the Kent Federation Show held at Detling, the Society entered the ‘Members Choice’ open to associated W.I.s and societies.

Four items are selected from a given list of horticultural subjects and must be exhibited in a frame 2' x 2'6". Each item receives a maximum of ten points with a further ten being awarded for presentation.

Despite the efforts of our on-site representatives, Brian and Tina Fryer, the Society was pipped to the Kent County Agricultural Society's Challenge Cup by Stockbury, but only by a single point. 41 – 40 with Doug Drury's Sweet Peas and Brian Fryer's potatoes each scoring nine points.

Disappointing but it gives hope for next year.

Derek Parks

Pippins Farm Apple Day

Sunday October 15th 2017

11am – 5pm



- Apple Pressing Demonstrations
- Free litre of fresh juice per adult (own container)
 - Juice and Cider Tastings
- Apple Tastings and Displays – approx 50 varieties
 - Orchard Tours
 - Pick Your Own & Farm Shop
 - Apple Games
 - “Apple Art” Display
- Hog Roast & Homemade Refreshments

ENTRY: Adults £4 (proceeds to Hospice in the Weald)

From A21 – take A228 for Paddock Wood. Follow signs for Pembury and Hospice in the Weald.

Pippins Farm, Maidstone Road, Pembury, Kent, TN2 4AD
(www.pippinsfarm.co.uk 01892 824544)

Reg Charity No. 280276

Community Café

Pembury Baptist Church run a community café once a month, every third Saturday between 11am and 3pm. It is open to everyone.

Our next café is on Saturday 16th September.

My team of volunteers offer tea and coffee, toasted crumpets, soup or sandwiches but we are especially known for our delicious home-made cakes. What makes us stand out from other cafes in the village? We are absolutely free! That is right, there is no charge for anything and whilst we welcome donations, there is no obligation or expectation. Any donations we do receive go to charity and do not fund the church in any way.

Many of our older residents come and stay for



several hours as it is a nice atmosphere to sit and meet up with friends for a chat over a pot of tea. Patrick Gillan (Parish Councillor) is often found there chatting to them about their local concerns. We also have a children's corner with colouring books and toys.

Tracy Gregory

Pembury Baptist Church

Women2Women Italian Meal on Wednesday 13th September from 7.30pm at PBC with Hennie Nijman speaking. Tickets are £10.

The Alpha Course Introductory Supper on Saturday 23rd September at 7.30pm including a meal and DVD.

The Alpha Course starts on Thursday 28th September for 11 weekly sessions at PBC at 7pm. Includes a meal.

HOPE Musical Evening 30th September 2017 all proceeds to Hospice in the Weald. If you would like to book yourself a place to take part, contact 01892 825590.

Women2Women try Choir Singing evening on Wednesday 29 November at 7.30pm with Carrie Walshaw

Jennifer Roberts

RNLI

Supporters of RNLI Pembury Branch were invited to witness a training exercise by the crew of Newhaven Lifeboat Station on 11 June.

But the exercise was interrupted, while they were aboard - as the Lifeboat was diverted to a real-life "shout" off Seaford Head.

In a co-ordinated operation involving the RNLI, HM Coastguard and the Ambulance Service, an injured windsurfer was winched to safety up a sheer cliff face, against a fast-rising tide.

RNLI Pembury Branch Chairman, Peter Chartres, commented afterwards that this was an excellent

opportunity for our local volunteer fundraisers to see at first hand how hard-earned charity monies are put to vital life-saving use.

Yvonne Horswill



USEFUL CONTACT NUMBERS/EMAIL ADDRESSES

Parish Council Chair	Cllr Mrs J Crowhurst	01892 824873
Clerk to the Parish Council	Helen Munro	01892 823193
Tunbridge Wells Borough Council	info@tunbridgewells.gov.uk	01892 526121
Kent County Council	county.hall@kent.gov.uk	03000 414141
Town/Country Housing Manager	info@tchg.org.uk	01892 501480
Pembury Surgery		01892 825488
NHS Medical Advice		111
Tunbridge Wells Hospital, Pembury		01892 823535
Pembury Pharmacy		01832 822896
Pembury Library	pemburylibrary@kent.gov.uk	03000 413131
Police – Emergency		999
Police – Non-Emergency		101
Childline		0800 1111
Samaritans		116 123
St. Peter's Upper Church	Rev'd. Douglas Robertson	01892 824761
St. Anselms Catholic Church	Father Ed Tomlinson	01892 825009
Pembury Baptist Church	Church Administrator	01892 825590
PCSO – Nick Brown	nicholas.brown@kent.pnn.police.uk	07772 226001

IT'S EASY TO REPORT FAULTS ONLINE

Streetlights in the majority of Pembury are owned by Kent County Council and they should be contacted if a light becomes faulty. Go to www.kent.gov.uk. Find 'Roads and Travel report a problem' – and follow through the instructions. You will need a postcode. If you don't have access to the internet, you can telephone KCC on 03000 414141 or alternatively telephone the Parish Council 01892 823193 who will pass on the information.

KCC repairs most problems within 28 days. Some issues take longer depending on how much work is needed.

The Parish Council owns the street lights in Romford Road, Belfield Road, Henwood Green Road (from Romford Road to Bo-peep and KCC for the others) and Woodside Road so any issues with street lighting in these roads should be

reported to the Parish Council on 01892 823193.

Other faults can be reported online – please see KCC website www.kent.gov.uk

KCC aims to fix:

- dangerous faults within 2 hours
- safety hazards within 7 days
- street lights within 28 days unless there is a more serious problem, which could take longer
- traffic signals within 4 hours if they are urgent or within 7 days if less urgent
- all other faults will be scheduled in to our planned maintenance.

For any other issues such as fly tipping, litter, parking or street cleaning - contact Tunbridge Wells Borough Council on 01892 526121

RECIPES

CHICKEN AND TARRAGON BURGERS



225G (8oz) Minced Chicken
1 Onion (finely chopped)
1 tbsp Fresh Tarragon (chopped)
1oz Fresh Breadcrumbs
1 Egg Yolk
Salt/Ground Black Pepper

1. Put the chicken into a bowl with the onion and tarragon, egg yolk and breadcrumbs. Mix well and add about 2½ fl.oz cold water and season with salt and pepper.
2. Lightly oil a foil lined baking sheet. Divide the chicken in half and shape into two rounds. Cover and chill for 30 mins.
3. Pre-heat the grill. Slide the baking sheet under the grill, cook the burgers 5-6 mins each side until cooked through.
4. Serve in a toasted bun with salad leaves, a tomato and coleslaw

KENTISH CHERRY BATTER PUDDING



1lb (450g) Dark Cherries (pitted)
2oz (50g) Plain Flour
2oz (50g) Caster Sugar (extra to serve)
2 Eggs (separated)
300 ml / ½ pint milk
75g (3oz) Butter (melted)

1. Stir the flour and sugar together in a mixing bowl, then slowly stir in the egg yolks and milk to make a smooth batter. Stir in ½ the melted butter. Rest the mix in the fridge for 30 minutes.
2. Pre-heat oven to 220°C/425°F/Gas mark 7. Pour the remaining butter into the bottom of a 600ml / 1pt ovenproof dish and put in the oven to heat.
3. Stiffly whisk the egg whites and fold into the batter with the cherries. Pour into the dish and bake for 15 minutes.
4. Reduce the heat to 180°C/Gas mark 4 and cook for 20 minutes until golden and set. Remove from oven and sprinkle with the extra sugar.
5. Serve with cream or custard.



rnli.org.uk



Lifeboats

Come to
The Catholic Hall,
Lower Green Road,
Pembury



AUTUMN FAYRE

Saturday 4 November

10am – 12noon

to be opened by

The Mayor of Tunbridge Wells

Cllr Julia Soyke

Admission 50p (including refreshments)

Children 20p

GIFTS * SOUVENIRS * TOYS * GAMES
GRAND RAFFLE * CAKES * HOMECRAFTS
WHITE ELEPHANT * CHRISTMAS CARDS

The RNLI is the charity that saves lives at sea

Registered in England and Wales (209603) and Scotland (SC037736). Charity number CHY 2678 in the Republic of Ireland



540 877019

RECORDED CRIME IN PEMBURY

If a road name does not appear in the table below, it is because no crimes have been recorded by Kent Police in that road during the specified period.

Crime type by reported month	Violent Crime	Burglary Residential	Theft of Motor Vehicle	Criminal Damage Offences	Theft Offences (exc vehicle offences)	Other Offences	Total recorded crime
Apr-17	7	1	0	2	8	3	21
May-17	9	1	3	6	4	8	31
Jun-17	7	0	0	2	7	4	20
April - June 2017	23	2	3	10	19	15	72

	Violent Crime	Burglary Residential	Theft of Motor Vehicle	Criminal Damage Offences	Theft Offences (exc vehicle offences)	Other Offences	Total recorded crime (EXC BURGLARY)
A21 A	0		1	1	0	0	2
BEAGLES WOOD ROAD	2		0	0	0	0	2
CAMDEN AVENUE	0		0	1	0	0	1
CHESTNUT WALK	2		0	0	0	0	2
CHURCH ROAD	0		0	0	0	1	1
CORNFORD LANE	1		0	0	0	0	1
ELMHURST AVENUE	2		0	0	0	0	2
HALF MOON LANE	1		0	1	0	0	2
HASTINGS ROAD	2		1	1	2	1	7
HENWOOD GREEN ROAD	3		0	0	1	2	6
HENWOODS CRESCENT	0		0	2	1	0	3
HIGH STREET	0		0	0	3	0	3
KINGS TOLL ROAD	0		0	0	0	3	3
LOWER GREEN ROAD	1		0	0	0	0	1
MAIDSTONE ROAD	0		0	1	0	0	1
OLD CHURCH ROAD	0		0	0	1	0	1
PEMBURY ROAD	0		0	0	4	3	7
PENNS YARD	1		0	1	0	0	2
ROMFORD ROAD	1		0	0	0	0	1
THE FORSTAL	0		0	0	2	0	2
THE GILL	0		0	0	1	0	1
TONBRIDGE ROAD	7		1	1	4	5	18
WOODLANDS	0		0	1	0	0	1
TOTAL RECORDED CRIME (EXC BURGLARY)	23		3	10	19	15	70

The data above was extracted from Kent Police's LIVE crime recording system GENESIS on 11th July 2017 at 11:30 hrs, and is therefore subject to change.

CRIME REPORT

What a wonderful summer we have had so far; it's a pity I cannot say the same about Pembury's crime figures for the months of April, May and June. The figure is more like figures we have in the winter months when the creatures of the night come out. This means that the last year reads as follows: July, Aug, Sept 2016 (60); Oct, Nov, Dec 2016 (77); Jan, Feb, Mar 2017 (55); April, May, June 2017 (72). We really cannot accept this for Pembury. I haven't got a clue what any of the surrounding villages' figures are but when you look at today's news that National Crime figures indicate an increase of ten per cent, I really don't think we want to become part of that. Thankfully we do not appear to have become part of the national surge in knife crime attacks but is that just waiting to happen? But let's talk about Pembury.

The main increases are as follows: Theft Offences, excluding Motor Vehicles up from 13 to 19, Criminal up from 6 to 10, Other Offences up from 3 to 15. Thankfully there are no reported Drug Offences although we still have reports of traces being left around the Village and if that is the case I would love nothing more to find that someone has been nabbed.

Whilst the Police are very short in numbers, we must give them all the help we can. The Violent Crime figures have come down from 26 to 23 and are made up as follows: Assault 2, Assault on Police 3, Common Assault 10, Malicious Communications 4 and Public Order 4. Of these, 10 were Domestic related.

Let us all unite to drive these figures down and drive the criminal out of our community, although of course we never know whether they just come into the village for a night of crime and then disappear back to their nest.

I would also like again to reiterate the comments I have made before regarding some dog owners who still do not want to accept their responsibilities to pick up their dog's poo and put it in the bins provided. Please do not put it under someone's hedge or just leave it on the ground.

Be careful out there.

Hugh Boorman

Civic Amenity Lorry

Domestic Waste	Garden Waste
Sunday 17 September 17	Sunday 1 October 17
The vehicle will be parked at:	The vehicle will be parked at:
Henwood Crescent 12noon - 12.55pm	Henwood Crescent 12noon - 12.55pm
Heron's Way 1pm - 1.55pm	Heron's Way 1pm - 1.55pm
Woodhill Park 2pm - 3pm	Woodhill Park 2pm - 3pm

The following items cannot be accepted on the vehicle:

Waste generated from outside Tunbridge Wells borough, Waste from businesses, Waste transported in a commercial vehicle, waste on trailers, car batteries, asbestos, rubble / bricks, plasterboard, doors & large pieces of wood, tree trunks or branches which are wider than 75mm (3 inches), white electrical products – fridges / freezers etc, televisions, kettles, microwaves etc, sheet(s) of glass, toughened glass, mirrors, tyres, chemicals / hazardous waste or any type of liquid, soil, paint, oil of any type.

For future dates please check our website www.pemburypc.kentparishes.gov.uk

WHO'S AT YOUR DOOR?

While there are many legitimate reasons for officials and trades-people to call at your home, not all visitors will have your best intentions at heart so it's wise to be on your guard when you answer your door.

From pushy roofers to dodgy driveway workers to aggressive 'duster sellers', doorstep scammers can be relentlessly persuasive and it can be easy to fall victim.

Working with Community Safety partners we identify vulnerable residents who may benefit from a personal visit by a friendly KCC Community Warden. They will bring door stickers and can provide advice on a range of related issues.

If you have a vulnerable or elderly relative or friend you think could benefit from a visit please contact KCC Community Warden Team Leader, Siobhan MacKay, via siobhan.mackay@kent.gov.uk, and she will arrange a suitable appointment.

In the meantime, here are some practical steps you can take to protect yourself now:

Stop, chain and check

- Stop: think about whether you're expecting anyone.
- Chain: put the door chain on or look through the window or spyhole to see who's there.
- Check: ask for an identity card and examine it carefully – you can always tell the caller to come back another time when someone will be with you.



Put up a deterrent sign

You could put a 'no cold callers' sign on your door or window, which should deter any cold callers from knocking on your door. You can download a free sign from Action Fraud or look out for them at the Gateway in Royal Tunbridge Wells town centre, the Weald Information Centre in Cranbrook or the public library in Paddock Wood.

Password protection

You can set up a password with utility companies (gas, electricity, water etc) so you know they are genuine if they send a representative to your address. Contact your utility company to find out how to do this.

Call the Police

Finally, if you're suspicious or the caller won't leave or is verbally abusive contact the police on 999. Alternatively, use the police non-emergency number 101 if you're not in immediate danger but want to report an incident.

For further advice and links to Action Fraud and other resources visit our webpage at
tunbridgewellscsu.org.uk/cold-calling

FOR YOUR DIARY

Village Market – Village Hall, Tuesday 9am – 11.30am

CAB – Pembury Library – alternate Tuesdays 9.30am – 11.30am

Community Coffee Shop – Pembury Pavilion, Recreation Ground – Mondays 9.30-12noon

'The Shed' Youth Café – at Pembury Baptist Church – Fridays 6 – 8pm (school yrs 7-13) term time only

SEPT			
4th	Parish Council Meeting	7.45pm	Parish Council Office
4th	Flower Workshop	8pm	Pembury Baptist Church
5th	U3A	2pm	Village Hall – Interest Group signing up day
9th	Pembury Gardeners	2pm	Village Hall – Autumn Show
14th	Ladies Thursday Afternoon Club	2 – 4pm	Village Hall Meeting Room
OCT			
2nd	Parish Council Meeting	7.45pm	Parish Council Office
2nd	Flower Workshop	8pm	Pembury Baptist Church
3rd	U3A	2pm	Village Hall – Guest Speaker
6th	Evening WI	7.45pm	Village Hall - Pottery Demonstration
7th	Pride In Pembury Winners' Tea	3pm	Pembury Pavilion
12th	Ladies Thursday Afternoon Club	2-4pm	Village Hall Meeting Room
15th	Pippins Farm Apple Day	11am – 5pm	Pippins Farm, Maidstone Road, TN2 4AD
18th	Pembury Society Autumn Meeting	7.45pm	St. Peter's Upper Church
NOV			
3rd	Parish Council Firework Event	7.30pm	Recreation Ground, Lower Green Road
3rd	Evening WI	7.45pm	Village Hall - Margo's Patchwork and Textiles
4th	RNLI Fayre	10am-12noon	Catholic Hall
6th	Parish Council Meeting	7.45pm	Parish Council Office
6th	Flower Workshop	8pm	Pembury Baptist Church
7th	U3A	2pm	Village Hall – Guest Speaker
9th	Ladies Thursday Afternoon Club	2-4pm	Village Hall Meeting Room
12th	Remembrance Sunday Service	10.45am	St. Peter's Upper Church
18th	Pepenbury Quiz Night	7pm	Pembury Village Hall
DEC			
1st	Evening WI	7.45pm	Village Hall – American Supper
4th	Parish Council Meeting	7.45pm	Parish Council Office
4th	Flower Workshop	8pm	Pembury Baptist Church
5th	U3A	2pm	Village Hall

Richard Snow has taken over responsibility for updating the Village Diary, which can be viewed at www.pembury.org. The diary serves two purposes. Firstly to enable event organisers to check the diary before arranging an event to avoid clashes. Secondly to enable everyone to know what is happening in the village. It is important that information is sent to Richard at: events@pembury.org with date, times, title of event, venue and contact details. Please note that to view the calendar you must be using a recent version of Firefox, Google Chrome or Internet Explorer (IE11 or later). Computers running Windows XP will only be able to view the calendar using Firefox or Google Chrome.

Organisations – please contact me with your dates for inclusion in the next edition of the magazine:

deputy@pemburypc.kentparishes.gov.uk

YOUR REPS



Cllr Mrs June Crowhurst
44 Elmhurst Avenue, TN2 4DA
Tel: 824873

Chair of Pembury Parish Council
Vice Chair of Amenities, Christmas Lights and Pride in
Pembury (inc. Public Relations) Working Group



Cllr Sean Cawley
c/o Henry Paul Funerals
10 High Street, TN2 4NY - Tel: 825505

Member of Environment, Environmental Issues (inc.
Allotments and Burials) Working Group



Cllr Mrs Shelley Harris
29 Lower Green Road, TN2 4DZ
Tel: 822544

Vice Chair of Audit, Finance and Personnel Working Group



Cllr Mrs Louise Mills
114 Henwood Green Road, TN2 4LN
Tel: 07882 655416

Vice Chair of Planning and Highways Working Group,
Member of Amenities, Christmas Lights and Pride in Pembury
(inc. Public Relations) Working Group Member of Newsletter
Editorial Working Group



Cllr Mike Hocking
53 Herons Way, TN2 4DW - Tel: 826245

Member of Environment, Environmental Issues (inc.
Allotments and Burials) Working Group



Cllr Mrs Katy Brooks
54 Hastings Road, TN2 4JP - Tel: 825882

Chair of Audit, Finance and Personnel Working Group,
Member of Newsletter Editorial Working Group, Member of
Planning and Highways Working Group



Cllr Alan Gaukroger
The Limes, Cornford Close, TN2 4QP
Tel: 824671

Chair of Planning and Highways Working Group



Cllr David Coleman
22 Ridgeway, TN2 4ER - Tel: 823402

Chair of Amenities, Christmas Lights and Pride in Pembury
(inc. Public Relations) Working Group, Member of Audit,
Finance and Personnel Working Group, Member of
Newsletter Editorial Working Group, Member of Planning
and Highways Working Group



Cllr Patrick Gillan
1 Knights Close, TN2 4EL - Tel: 825324

Chair of Environment, Environmental Issues (inc. Allotments
and Burials) Working Group



Cllr Patrick Kirby
51 Hastings Road, TN2 4JS - Tel: 824431

Member of Audit, Finance and Personnel Working Group,
Member of Environment, Environmental Issues (inc.
Allotments and Burials) Working Group



Cllr Mrs Susan Sharp
1 Sweeps Hill Close, TN2 4LT - Tel: 823040

Vice Chair of Environment, Environmental Issues (inc.
Allotments and Burials) Working Group



Cllr Mrs Christine Snow
1 Cornford Park, TN2 4PW - Tel: 825428

Vice Chair of Pembury Parish Council, Member of Amenities,
Christmas Lights and Pride in Pembury (inc. Public Relations)
Working Group, Member of Environment, Environmental
Issues (inc. Allotments and Burials) Working Group, Member
of Newsletter Editorial Working Group



Cllr Mrs Annie Partridge
Redfern, Lower Green Road, TN2 4EE
Tel: 07703135070

Member of Amenities, Christmas Lights and Pride in
Pembury (inc. Public Relations) Working Group

Clerk to Pembury Parish Council

Helen Munro
c/o Parish Council Offices, Lower Green Recreation Ground
Lower Green Road
Pembury, TN2 4DZ Tel: 823193
Email: clerk@pemburypc.kentparishes.gov.uk

Deputy Clerk to Pembury Parish Council

c/o Parish Council Offices, Lower Green Recreation Ground
Lower Green Road
Pembury, TN2 4DZ Tel: 823193
Email: deputy@pemburypc.kentparishes.gov.uk

BOROUGH COUNCIL

Cllr Paul Barrington-King - 57 Henwood Green Rd ,TN2 4LH Tel: 07899 731696
Cllr David Reilly - 8 Forest Way, TN2 2EP
Cllr Sue Nuttall - 6 Greenleas TN2 4NS

COUNTY COUNCIL

Cllr Paul Barrington-King - 57 Henwood Green Rd ,TN2 4LH Tel: 07899 731696

VILLAGE ORGANISATIONS

AGE CONCERN

Mrs Sandra Springett. Tel: 522591

AMBERSIDE DANCE STUDIO

Principal: Sadie Van Der Spuy. Tel: 07734 053509
www.360dance.co.uk

CATHOLIC CHURCH

Fr. Ed Tomlinson. Tel: 825009

CONSERVATIVE PARTY

Sue Nuttall. Tel: 01892 822776. Email: sue_nuttall@tiscali.co.uk

FRIENDS OF PEMBURY PARISH CHURCH

Chairman: Mrs S. Clarke, Little Stanton, Romford Road.
Tel: 823932

GUIDES, BROWNIES AND RAINBOWS

Mrs M. Allan, 9 Henwood Green Road. Tel: 822373

HOSPICE IN THE WEALD

Maidstone Road. Tel: 820500

KENT COLLEGE

Headmistress: Ms J. Lodrick. Tel: 822006

KENT COLLEGE PREP SCHOOL & NURSERY

Headteacher: Mrs G Hughes. Tel: 820204

LIBERAL DEMOCRATIC PARTY

David Mills. Tel: 825577

LITTLE RASCALS

c/o PBC Office. Tel: 825590

MULTIPLE SCLEROSIS SOCIETY

TVW District. Tel: 0845 6037882

NATIONAL FEDERATION OF THE BLIND, UK

Michael Coggles. Tel: 822705

NEIGHBOURHOOD WATCH

Janet Ditchett. Tel: 822586

OUT AND ABOUT CLUB

Sue Giles. Tel: 823318

PEMBURY ATHLETIC (YOUTH) FOOTBALL CLUB

Alban Poulosom. Tel: 822919 / 07748680071

PEMBURY BAPTIST CHURCH

Church Office. Tel: 825590

PEMBURY BOWLS CLUB

Phil Griffin. Tel: 01892 823129

PEMBURY BRIDGE CLUB

Geoff Plummer. Tel: 824652

PEMBURY CRICKET CLUB

Secretary/Treasurer: Mr A Weaver, 51 Heskett Park
Tel: 824362

PEMBURY DAY CENTRE

c/o PBC Office. Tel: 825590

PEMBURY FOOTBALL CLUB

Saturday Secretary: Bill Baker. Tel: 825822

Sunday Secretary: Phil Craxton. Tel: 823928

Chairman: Andy Rice-Tucker. Tel: 822483

PEMBURY GARDENERS' SOCIETY

Ann Purton. Tel: 824223

PEMBURY WALKING CLUB

Martin Bolt. Tel: 07769707061

PEMBURY PAVILION BOOKINGS

Gillian Mayrick. Tel: 824852

PEMBURY PLAYERS

James Whitehorn. Tel: 824854

PEMBURY SCHOOL

School Office. Tel: 822259

PEMBURY SCHOOL ASSOCIATION

Chair: Theresa Mason. email: psa@pemburykent.sch.uk

PEMBURY SCHOOL HOUSE NURSERY

Teacher in charge: Rachel Teigen. Tel: 825580

PEMBURY SHORT MAT BOWLING CLUB

Arthur Storey. Tel: 822509

PEMBURY SOCIETY

Chairman: David Hanes. Tel: 823174

PEMBURY U3A

Membership Secretary: Andrew Richardson. Tel: 824012

PEMBURY UPPER AND OLD CHURCH

Rev'd Douglas Robertson. Tel: 824761

PEMBURY VILLAGE MARKET

Jean Tyler. Tel: 01732 823413/Suzanne Leviton. Tel: 07927713256

PEPENBURY

CEO Sarah Stookes, Cornford Lane. Tel: 822168

POLICE COMMUNITY SUPPORT OFFICER

PCSO Nick Brown. Tel: 07772 226001

Email: nicholas.brown@kent.pnn.police.uk

ROTARY CLUB OF SOUTHBOROUGH & PEMBURY

Secretary: Nigel Stratton. Tel: 822936

ROYAL NATIONAL LIFEBOAT INSTITUTION

Peter Chartres, 54 Woodhill Park. Tel: 823759

SCOUTS, CUBS AND BEAVERS

Michelle Usherwood. Tel: 822020

SCOUT & GUIDE HQ MANAGEMENT TEAM

Michelle Usherwood. Tel: 822020

ST. ANSELM HALL ENQUIRIES

Janet Ditchett. Tel: 822586.

ST. PETER'S MOTHERS' UNION

Secretary: Tina Walters. Tel: 822545 (after 4pm)

TABLE TENNIS CLUB

John Burleton. Tel: 823250

THE ORDINARIATE OF OUR LADY OF WALSHINGHAM

Fr. Ed Tomlinson, 31 Henwoods Crescent. Tel: 825009

TOWN & COUNTRY (HIGH WEALD HOUSING)

Housing manager: Stephen Aspinall.

Tel: 0845 8731 321

TREE WARDEN

Hugh Boorman. Tel: 823068

TUNBRIDGE WELLS ACCESS GROUP

Gill Pavely. Tel: 822605

TUNBRIDGE WELLS & DISTRICT VICTIM SUPPORT SCHEME

Tel: 513969

VILLAGE HALL

Manager (bookings): Karen Tamblin. Tel: 07983 228181

WOMEN'S INSTITUTE

Evening: Mrs Gillian Williamson. Tel: 01892 822 577

Email: pewisecretary@gmail.com

Web: pemburyeveningwi.wordpress.com

01892 825505



HENRY PAUL FUNERALS

Contemporary and Traditional Services

HENRY PAUL FUNERALS is a traditional family owned funeral directors purposely dedicated to providing distinct levels of service, choice, dignity and care to bereaved families in Pembury, Tunbridge Wells, Tonbridge and surrounding areas.

24 Hour Emergency Service • Home Visits • Private Chapel of Rest
Full Fleet of Modern & Vintage Vehicles • Floral Tributes • Catering
Memorial Masonry • Pre-paid Funeral Plans • Repatriation



Golden Charter
Funeral Plans

Perfect Choice
Funeral Plans

HEAD OFFICE

10 High Street, Pembury,
Tunbridge Wells, Kent TN2 4NY

01892 825505

pembury@henrypaulfunerals.co.uk

FUNERAL DIRECTORS

49-51 London Road, Southborough,
Tunbridge Wells, Kent TN4 0PB

01892 458338

southborough@henrypaulfunerals.co.uk

FUNERAL DIRECTORS & MEMORIAL SHOWROOM

88a Shipbourne Road,
Tonbridge, Kent TN10 3EG

01732 605002

tonbridge@henrypaulfunerals.co.uk

www.henrypaulfunerals.co.uk