

PEMBURY VILLAGE NEWS

ISSUE 162
Summer 2015



DO YOU WANT TO CONTRIBUTE TO PEMBURY'S FUTURE?

See Page 7

CONTENTS

Chair's Report	3	Picnic on the Green	20
Hazeldene House	4	Pembury Horticultural Competition	21
Pembury Environmental Group	6	Pembury Police Community Support Officer	22
Do You Want to Contribute ?	7	Kenward Trust in Pembury	23
The Pembury Society	7	Emergency Services Funday	25
Penns Yard Update	7	Pembury Bowls Club	26
Pembury School Read-A-Thon	8	Shot Down Over Pembury	27
Midsummer Barn Dance	8	Sydney Sparrow	29
South East Open Studios	9	Sydney Sparrow Continued	30
Pembury Scout Group	11	Healthy Options in Pembury	32
Lifeboats and Pembury Scouts	11	Pembury Gardeners' Society	32
Dancing For Comic Relief	13	Recipes	33
Brownie Holiday	13	Awayday Fun	34
Community Coffee Shop	13	Crime Report	34
Hospice in the Weald	14	Crime Figures	35
Pippins Farm Apple Day	15	Tunbridge Wells CAB	36
'Tyger Tyger'	17	For Your Diary	37
Grovehurst - Pembury	19	Your Representatives	38
Pembury U3A	19	Village Organisations	39

Front Cover Photograph taken by Sarah Pomfrett

PEMBURY VILLAGE NEWS

C/O Parish Council Office, Lower Green Recreation Ground,
Lower Green Road, Pembury, TN2 4DZ.

Distribution enquiries: Parish Clerk 01892 823193

Email: deputy@pemburypc.kentparishes.gov.uk

www.pemburypc.kentparishes.gov.uk

Pembury Village News is published four times a year by the Parish Council, but the views expressed in the magazine do not necessarily represent official council opinion or policy.

Please note: the Editorial team's decision is final on whether or not to publish any item submitted. They reserve the right to edit (that is to cut, précis, alter, correct grammar and spelling) any item published.

CHAIRMAN'S REPORT SPRING 2015

The Parish of Pembury is very dear to my heart, and like all of you I want the best for our Village and I really do need your help. For some time we have needed people to come forward with the aim of becoming a Parish Councillor. It is imperative with local democracy to have a balanced Council as more is being pushed on to the parishes to deliver services. The joy of being on Pembury Parish Council is that it is not political in any way, we just all get down to work for the best for Pembury. You will see a further appeal in this magazine so please give the idea serious thought, especially if you have moved here in the last few years, are settled now and feel you would like to be more involved in the Parish!!



I totally agree with our Environment Volunteers that the amount of litter around Pembury is blighting our green verges throughout the Village. Why is it so difficult to take it home or find a litter bin? I know with summer approaching all dog owners will be very responsible and 'poop a scoop' so that children in pushchairs or wheelchair users don't get detritus on their wheels.

Well done to Waterfield House for their first Health Awareness Day; there was a very comprehensive programme of events and it was so important for patients to see what other sources are available to us all. The Patient Participation Group was simply fantastic in all their work to get this first one launched.

Thank you for all your letters and messages in my retirement from the Borough Council, I so appreciated your kind words. The one good thing is that I can now give all my energies to our Parish.

In the meanwhile we have a packed summer of events happening. It started with the Craft Fair and Scarecrow Competition which will have taken place by the time this issue comes out, Picnic on the Green, which will be great this year, Old Church Cream Tea and lots of other events - diaries definitely need to be filled in.

Kind Regards

June

COPY DEADLINE FOR NEXT ISSUE

Any news items or articles for possible inclusion in the next issue of this magazine must be forwarded to the Parish Office, c/o Parish Council Office, Lower Green Recreation Ground, Lower Green Road, Pembury, TN2 4DZ

1st August 2015

Please send your article and photos in by email to
deputy@pemburypc.kentparishes.gov.uk

HAZELDENE HOUSE OPENS ITS DOORS FOR CARE HOME OPEN Day on 19th June

Since Launching their 'Volunteer Buddy' Scheme in September 2014, Hazeldene House Nursing Home has enjoyed welcoming volunteers from all walks of life and proved how valuable a visit from a new local friend can be to the wellbeing of residents.

To continue their vision of making Hazeldene House a place where nice things happen, they are opening their doors on Care Homes Open Day on Friday 19th June, when visitors can meet staff and residents and take part in the unveiling of their new children's play area in the garden.

The play area initiative, along with a Family Corner, with books, toys and a chalk board, are all part of their aim to ensure that when new residents move in, their extended family, friends and neighbours all feel welcome to visit, including pets and children. Other developments include supporting residents to host a 'room warming' party, choose, write and send cards to celebrate loved ones' birthdays and other occasions and running residents' hobby clubs with the help of volunteer 'Buddies'.

Two new residents have recently held family gatherings which were a huge success. They also run a Saturday morning craft club where wonderful friendships are developing between residents and local 6th form students.

Other events included a Valentine's Dinner and an Easter Egg Hunt, with a raffle that raised £240 for the Age UK Daycentre which meets on the premises. And also to bring residents into the age of social media they are being offered the chance to use SKYPE to keep in touch with family abroad.

If you would like to find out more about Hazeldene House, volunteering as a buddy or Care Home Open Day go to www.hazeldenehouse.co.uk/opensunday, email Sandie Peters at sandie@grahamcare.org or phone 01892 823018



Saturday 27th June 2015
Pembury Old Church
2.30 pm – 4.30 pm

 St Peter's Pembury
Sharing God's Love



STRAWBERRY CREAM TEA

With folk songs by Roger Resch

Delicious home-made scones with strawberries, jam and cream.
Listen to the sounds of Kentish music in Pembury's
beautiful Old Church – a delightful afternoon event.
Parking at rear of church through Kent College.

www.pemburychurch.net 01892 824761



NHS

Brenchley Dental

01892 723529

General and Cosmetic Dentistry

**Friendly, local, affordable dental care with ample free parking.
Free preventative dental care for children.**



Principal Dentist:
David Bush,
BDS (Hons) Lon, LDS RCS (Eng)

Associates:
William Kiely, BDS (NU Ire)

Edward Willshire,
BSC (Hons)
BDS MJDF RCS (Eng)

Call 01892 723529 for an appointment – we look forward to meeting you!
email: info@brenchleydental.co.uk
www.brenchleydental.co.uk

CM

Caroline Milwidsky

**The Reliable and Professional Service with the
Personal Touch**

**Accounting Bookkeeping Payroll and PAYE National Insurance Self Assessment
RTI Compliance Management Accounts Corporation Tax Budgets and cash flows VAT**

???? How much time do you spend on your accounts rather than running your business ????

**Not only can we prepare your annual accounts and deal with the tax, but we can also help on a day by day,
week by week, monthly or quarterly basis.**

**Our clients include Self Employed Sole Traders and Limited Companies across a wide
and varied range of businesses.**

Contact: Caroline Milwidsky Tel: 01892 891220 - Mob: 07885 249968

Email: c.milwidsky@btconnect.com

REPORT FROM PEMBURY'S VOLUNTEER ENVIRONMENTAL GROUP



I think I may have said before that our little group which normally meets on a Thursday looks after twenty two point seven kilometres of footpaths which surround the village through fields, woodland and orchards. Once again it has been a very busy winter removing fallen branches and trees, unblocking waterways and erecting new footpath sign posts and stiles to name a few of the tasks. Most of the equipment comes from KCC and the Parish Council.



We have made good the steps on footpath WT 247 which can be accessed by walking across the fields below Kent College, path number WT204A and then turning up into the woods just above the Old Mill House onto footpath WT247. Unfortunately some of these paths need regular attention each year because they are subject to considerable damage from winter rains.

We have carried out repair work on the steps and handrail on Footpath WT222 leading from the overgrown orchard of Stonecourt Farm down into

the woodland. We also made good the handrail of the steps by using timber from the overgrown woodland. Where the rain water rushes down out of the orchard into the woodland it had also eroded the approach to the bridge over the stream and by using timber supplied by KCC we added an additional step to make easier access to the bridge. These are just a few of the tasks that our group has managed to complete over the last few months and we now come into the clearance of rapid growth spring vegetation which soon takes over the footpaths.

Unfortunately we have one or two local land owners who do not keep to their side of the bargain when it comes to footpaths and we have to leave that in the hands of the KCC footpath's officer.



The Parish Council now owns the Old Coach Road down to the second pond and we hope that you will enjoy the quietness of that location. Our group has installed one or two benches down there for walkers to just sit and enjoy the peace and quiet. Many thanks to Johnny Boakes, Neil Franklin, Mick Waterman and Sarah Pomfrett for their continued hard work and support. Please come and join us if you would like to even if it is only for one week. You can contact me on 823068. Look forward to seeing you.

Coloured village footpath maps available from the Parish Office for £1.00.

Hugh Boorman

DO YOU WANT TO CONTRIBUTE TO PEMBURY'S FUTURE?

There are 5 vacant places on Pembury Parish Council and at a time when there is more uncertainty about Pembury's future than ever before, when the Principal Councils and Government do less and less for us, development pressures circle us like vultures, we need a strong PARISH COUNCIL – the first tier of local government.

The Parish Elections on 7th May resulted in these FIVE vacancies because of a shortage of candidates, apparently caused by residents in all that pre General Election 'excitement', not even realising a Parish Election was taking place.

So are you interested in Pembury's future? If so why not apply to be a co-opted member of Pembury Parish Council and play your part in the village's future?

If you would like an informal chat about what it entails to be a Parish Councillor feel free to contact either Barbara Russell our Clerk (01892 82 3193), June Crowhurst (01892 82 4873) or me, David Coleman (01892 82 3402).

THE PEMBURY SOCIETY NEWS

Getting on for 80 Members and friends gathered for our April meeting when we had Dr Bob Bowes speaking on the NHS and how it is now structured, coupled with a lively question time on what the effects were likely to be for us as patients. This in a week when the Waterfield House Surgery Patients Participation Group held a Health Fete, bringing together the surgery doctors and health professionals, with various caring and support groups, and fun and games for the energetic doing exercises and Zumba dancing.

Dr Ian Beavis is coming to speak at our AGM meeting on 21st October. Dr Beavis is curator of Tunbridge Wells Museum & Art Gallery, a local historian, natural history specialist, entomologist and Tunbridge Ware expert. We look forward to his visit to Pembury, and welcome both members and prospective members to what should be a most interesting evening.

More committee members would be welcome as we lose Dave and Sally Osborn as they move from Pembury, and we do thank them for their various contributions.

The Interpretation Panel is almost ready, and going through its final proof readings. This is to be installed on the Village Green, and it will show the historical places in the village and the road layout so visitors to Pembury can find their way around.

David Hanes (Chairman)



**THE
PEMBURY SOCIETY**

PENNS YARD UPDATE

'Site preparation work is underway at Penns Yard with full start on site due to commence late May/early June 2015. The contractor, Chartway, is liaising with local residents at the present time'

Michael Allwood

PEMBURY SCHOOL READ-A-THON, POETRY COMPETITION

As part of Pembury School's recent Read-A-Thon event, the children entered a poetry competition which was judged by the Tunbridge Wells Writers. We are pleased to share the two winning entries, from Bethany in KS1 (5-7yr olds) and Maddy in KS2 (8-11 yr olds)

KS1 Winner - Bethany, Willow Class

I Love You

I love you as much as the moon shines bright
And the sun feels warm
And the clouds are white
But I love you as much as the sea is blue
The snow is cold
And the cows can moo
But I love you as much as the cars go fast
The snow falls down to the ground
And the deserts are vast
But I love you as much as sky is blue
And as much as the glitterball glitters
My love will always be fresh and new
Let's just agree that You love me
And I love you and that together
There is nothing that we can't do



KS2 Winner - Maddy, Maple Class

Cat

Cat sneak out of the house,
Go catching a rat or a mouse.
Climb up a tree and I'll know what you see.
For I stay in sight of your eyes,
And they are full of lies.
Then you stop and hear,
Crying or just tears.
You sneak around the corner,
I don't know where you are but I know I'm getting warmer.
Where have you gone?
Have you gone away but not for very long.

MIDSUMMER BARN DANCE

Why not dance the night away on Saturday 20th June at Pippins Farm?

St. Peter's Church is organising a barn dance with the Abbey Capers Barn Dance Band which will start at 7.30pm and finish at 10.30pm. There will be a licensed bar to include real ale from Harthill Village Brewery and cider cup from Pippins very own cider.

Tickets are £13 each which includes a Ploughman's Supper and they can be bought from Pembury Pharmacy or directly from me.

I can be contacted on 01892 822568 or gill.betts@outlook.com. Please email me if you would like any further information.

We look forward to seeing you there.

Gill Betts

SOUTH EAST OPEN STUDIOS

5TH – 21ST JUNE 2015



Every year in June, artists and craftspeople across the south east of England open their doors to the public as part of the South East Open Studios event from June 5th to 21st. It is a unique opportunity to meet them and see them at work.

This year there will be another opportunity to visit the Art Studio at Pepenbury to see some of the wonderful work produced by their artists who are all people with a learning disability and complex needs. Pepenbury's Arts and Crafts Centre focuses on the development of an individual's creativity. They are encouraged to explore various techniques and materials and are assisted in designing and producing their own work.

Work from Pepenbury's pottery studio and plants produced in Pepenbury's nursery will be on sale. South East Open Studios member Rose Bridgland Colbridge will also be exhibiting at the Pepenbury site in Cornford Lane during the SEOS event.

Pepenbury is set in 100 acres of beautiful Wealden countryside with bluebell woods and countryside which is accessible to wheelchair users. Children will love the outdoor gym, adventure trail and animals, including donkeys, pigs, goats and small animal barn with rabbits and guinea pigs. Adults will love the newly refurbished coffee shop serving 'proper' coffee, teas, cakes, sandwiches and salads. Why not make a day of it?

Look out for posters with the SEOS paint tube logo to find opening details of other artists you might like to visit or go to www.seos-art.org or www.pepenbury.info for more information.

Pepenbury, Cornford Lane, Pembury, Tunbridge Wells, Kent TN2 4QU. Open every day from 10am-4pm.



Louise Sanders

Soprano Soloist

Weddings * Baptisms * Funerals
Special Occasions

www.sopranolouise.co.uk
sopranolouise@yahoo.co.uk
07775 624048

Chartered Certified Accountants



Apex Accountancy

- ☐ Accounts & Bookkeeping
- ☐ Business & Personal Tax
- ☐ Payroll / CIS refunds / VAT
- ☐ Sage, Kashflow & Xero Specialists
- ☐ Start Ups & Company Formation
- ☐ Fixed Fee Details On Website

*10% discount in the first year when you mention
Pembury village news...*

Apex... Friendly, professional, qualified

Tel. 01892 800900

Office 11 Dana Trading Estate, Transfesa Road, Paddock Wood TN12
6UT

www.apexaccountancy.co.uk
netmail@apexaccountancy.co.uk

Burtons

Pembury's Solicitors

* Prompt Efficient Friendly Service

The Tyled House
23a High Street
Pembury, Kent TN2 4PH

Tel: (01892) 824577

PEMBURY SCOUT GROUP



Here are some photos of the Pembury Scout Group event to celebrate St. George's day at Pembury's St. Peter's Church conducted by Rev'd. Douglas Robertson.



The Promises were renewed with some scouts reading prayers during the service.

During the service six cubs received Chief Scouts Silver Award and two scouts received Chief Scouts Gold Award. The church was full with Beavers, Cubs, Scouts, Leaders and parents & friends of the group.

(Photos by Nick Harrison)

LIFEBOATS AND PEMBURY SCOUTING

Pembury Scouts have been busy collecting money for the RNLI. Following a talk I gave to 1st Pembury Beavers in late January (to help them achieve one of their badges), they raised the magnificent sum of £192.19 at their Charity Day in March. That was augmented by a further £80.48 received by way of a retirement collection organised by Pembury Scouts, after the St. George's Day parade and service held at St. Peter's Upper Church.



All monies raised are put to good use in saving lives at sea and in the running of the lifeguard service on our beaches by the RNLI, which is a charity that receives no grant of any kind from HM Government. I am extremely grateful for these efforts by Pembury Scouting.

(Photo by Louise Sanders)

*Peter Chartres
Honorary Chairman - RNLI Pembury Branch*



01892 825848
07770 947888

Local professional business, with old fashioned core values
Very competitive pricing providing a reliable service
Fully qualified and insured with over 30 years' experience
No job too small, Residential & Commercial Premises

Please call Mark for a free quotation on 07770 947888

Leaflets | Programmes | Posters
Booklets | Wedding Stationery | Calendars
Business Stationery | Yearbooks | Brochures

Established for over 20 years, we are a family run printing company based in Pembury.
We have experience of working with small and medium sized businesses working within predefined budgets and offering a complete service from design to print if required, and 10 years experience of producing Funeral Service Sheets to Funeral Directors and Families.

We also produce exclusive car prints in conjunction with KAR-ART.

COMPOSING OPERATIONS LTD

PRE-PRESS • PRINTING • FINISHING • DOCUMENT MANAGEMENT

T: 01892 823988

E: compops@btconnect.com W: www.composingoperations.co.uk

DANCING FOR COMIC RELIEF

Girlguiding in Pembury participated in a Danceathon for 'Comic Relief' on Sunday 8th March. We had a multitude of Rainbows, Brownies, Guides, Senior Section, Trefoil Guild members and Leaders all dancing their socks off for a total of 6 hours between them. We raised over £400, so we want to thank all who attended and everyone who sponsored us.

Anyone who may be interested in helping in Guiding can contact Moira Allan at pemburybrownies@hotmail.co.uk.



BROWNIE HOLIDAY – 1ST PEMBURY BROWNIES

Eighteen Brownies and their leaders enjoyed an action packed few days at Blackland Farm near East Grinstead. The Brownies tried archery and wall climbing, as well as the crate challenge. With a 'Hollywood' theme there were some wonderful fashion designs made from coloured bin bags.

The Brownies had great fun rolling down hills and playing on the climbing frame. They enjoyed helping with the cooking but didn't enjoy washing up quite so much! A busy three days, and the weather was fabulous.



Anyone interested helping with guiding can contact me on pemburybrownies@hotmail.co.uk

Moira Allan - 1st Pembury Brownies

COMMUNITY COFFEE SHOP NEEDS YOU!

We are delighted to report that the Coffee Shop which opens each Monday morning from 9.30 am - 12.00noon (excluding Bank Holidays and Christmas Holidays) has been extremely well received by the local residents and visitors to Pembury. The Coffee Shop is situated in the Pavilion which is in the Recreation Ground.

We decided to carry out our own survey and are thrilled with the feedback from our customers. We thank you so much for your very kind comments. We are non-profit making and it is run by volunteers. Each week there is a wonderful display of homemade fayre, which can also be bought to take away! The atmosphere is welcoming, and if you haven't sampled it yet, we encourage you to

come along and enjoy the Coffee Shop and what it has to offer.

We look forward to seeing you there. During the summer we hope to have the side hatch open for the sale of refreshments for those who enjoy being in the park on a Monday morning.

We now need more volunteers to help with the Coffee Shop

Are you free one Monday in the month
From 9am – 12 mid-day?

Would you like to be part of a great team?

We would be pleased to hear from you.

Please contact Beverli Shaw 01892-823268
or Christine Snow 01892-825428

HOSPICE IN THE WEALD - OPEN GARDENS 2015

Hospice in the Weald - Open Gardens 2015

Summer's just around the corner, country gardens are bursting into colour and Hospice in the Weald Open Gardens is here once again to help you find some of the most delightful in our region.

Our Open Gardens scheme raised just over £11,000 for the hospice last year and, with some exciting additions for 2015, lots more visitors are likely to fancy a stroll around gardens of all shapes and sizes - small ones to inspire creativity, larger areas to explore, gardens for wildlife enthusiasts and interesting ideas for fruit and vegetable plots. And in several villages, neighbours are opening a chain of gardens so that visitors can wander from one to another.

To request a brochure please contact Pam Coleman on 01892 820502 or email pam.coleman@hospiceintheweald.org.uk or please visit www.hospiceintheweald.org.uk where you can view each individual garden.

We do hope that you will join us for the Hospice 2015 Moonlight Walk on Saturday 20th June. Starting at 7pm at the Army Reserve Centre on St. John's Road this 8 mile circular route through the heart of Tunbridge Wells is suitable for walkers of all ages and abilities.



This year's event is set to be more fun than ever with an after-walk celebration and en-route entertainment. Why not get your friends, work colleagues and family together to also take part?

As a charity, not part of the NHS, it costs over £6 million to run Hospice in the Weald every year so your involvement in our Moonlight Walk will play a big part in making a difference to the lives of our patients, their families and carers. Every donation we receive, no matter the size, makes a difference.

Just get involved today! To register please call Sara Clark on 01892 820586 or go to our website now to register and take advantage of our special offer early bird registration of £20 per person (under 10's free.)

www.hospiceintheweald.org.uk



HELP

You call... we HELP!

We have a specialist tradesman
for **EVERY** trade.

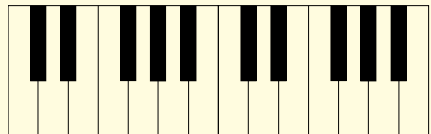
No matter the job... No matter the size!

*Discreet & Confidential Work Undertaken

Mr Morgan Miller

M: 07796868979 24/7 LINE

H: 01892 315712



Piano Lessons Theory of Music Lessons

Catherine S Brown LRAM PGCE

*Member of The Incorporated Society
of Musicians*

- Highly qualified and experienced teacher
- Beginner to grade 8 offered (all ages)
- Outstanding success rate with public examinations

Contact: 01892 824670
or csb.music@live.co.uk
catherinesusanbrown@hotmail.com



Pippins Farm Apple Day

Sunday October 18th 2015

11am – 5pm



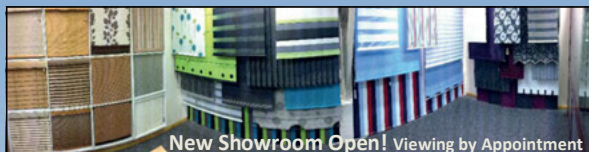
- Apple Pressing Demonstrations
- Free litre of fresh juice per adult (own container)
 - Juice and Cider Tastings
- Apple Tastings and Displays – approx 50 varieties
 - Orchard Tours
 - Pick Your Own & Farm Shop
 - Apple Games
 - “Apple Art” Display
- Hog Roast & Homemade Refreshments

ENTRY: Adults £4 (proceeds to Hospice in the Weald)

From A21 – take A228 for Paddock Wood. Follow signs for Pembury and Hospice in the Weald.

Pippins Farm, Maidstone Road, Pembury, Kent, TN2 4AD
(www.pippinsfarm.co.uk 01892 824544)

Reg Charity No. 280276



New Showroom Open! Viewing by Appointment



THE BEST KEPT SECRET IN PEMBURY!

Penumbra Blinds have been Manufacturing & Supplying Internal Window Blinds & Curtains, External Awnings and Canopies to residential and commercial customers from our facilities on Romford Road since 1991!

Your truly local company for any of the following:-

- ◆ All types of Internal Blinds including the new Vision™ roller blind system
- ◆ External Blinds, Awnings, Canopies & Gazebos
- ◆ Solar Control & Security Window Films
- ◆ Friendly Service
- ◆ Expert Advice
- ◆ No Pressure Sales!

Visit us at the far end of Romford Road and find out why we've been here so long!



Tel: 01892 825522 E-mail: info@penumbrablinds.com

www.penumbrablinds.com



Unit 2 Albans Farm, Romford Road, Pembury, Tunbridge Wells TN2 4BB



PEMBURY

TIME TO PARTY YOURSELF INTO SHAPE!

ZUMBA for All Abilities - TUESDAY FROM 8PM - 9PM &
ZUMBA for All Abilities - THURSDAY 7.30PM - 8.30PM
'ZUMBA GOLD' lower-intensity - THURSDAY 6PM-7PM

AT PEMBURY SCHOOL, LOWER GREEN ROAD, PEMBURY

AT THE ZUMBASTIC PRICE OF JUST £5 PER CLASS
- DON'T MISS OUT!

CONTACT ADELE ON 07876 787869 or
VISIT www.bookwhen.com/pemburyzumba
TO BOOK, AS SPACES ARE LIMITED



www.pemburyzumba.co.uk



Clear professional advice
Cost effective solutions
For all your hedging and tree surgery needs

Nick Winram Tel: 01732 440050
info@treeability.co.uk Mob: 07974 918879
www.treeability.co.uk

“TYGER, TYGER BURNING BRIGHT.....”

With reference to your request for stories to share about Pembury, I wondered if I could use the offices of your magazine to ask if anyone out there recalls this ‘incident’ at Pembury School nearly 60 years ago. I assure you this is not a belated April Fool’s joke, but a genuine attempt to find out whether anyone else who was a pupil at the time, or connected in any other way with the school, recalls it. I have already been in touch with someone who was in my set of youngsters at the time, and she is quite categorical in that she cannot recall it, and that my wife must be putting something into my tea! I have also tried in vain to search the Courier, police and other archives. I realise it’s a big ask, because this was about the time the Suez crisis was on, so we really are dealing with ancient history.

In the deep mid-fifties, as you walked past the Junior school, you could see into the upper half of the main hall from the front garden of the school-house or even from the road, and the large black-board that took up much of the south wall then was particularly visible. A member of staff at the time happened to be a gifted artist, and he decided to draw on that black-board a more than life-size depiction of a tiger peering through jungle foliage, ready to pounce! He used all the technicolour chalk.... orange, black, white and green, creating a brilliant, realistic, and dramatic picture which, as I mentioned, could be seen from outside the building. There was a ‘tiger on board’ you might say!

Over the weekend, some felon took it into his/her head to take a pot shot at the picture with a powerful airgun. On the Monday morning it was left to the janitor, the indefatigable Mr. Russell, to deal with the embedded pellet, as well as the corresponding hole in the window. Myth had it that he had to gouge the pellet out from between the tiger’s eyes, but I think that the malefactor missed the drawing altogether. Were this to have happened today, the episode would hardly have put Hughie’s crime figures in a good light, and in these post–Dunblane days, there would rightly be a shiver of anxiety and horror rippling through the community; but at least no real child or tiger had been harmed, and in those long gone days, we were presented with a ripping yarn which we kids could embellish over the weeks, or even years, afterwards.

If I have remembered the incident correctly, then despite the inexcusable criminality, there was something slightly Kipling-esque about the episode. Pith helmets in Pembury. You couldn’t make it up!

Can I invite anyone who has the remotest recollection of anything like this happening, to email me, please, at m_c_lee@btopenworld.com to put me out of my misery. (There is an underscore after the ‘m’ and after the ‘c’ in my email address)

Michael Lee (resident in Pembury 1951 – 1976.)

COMPUTER REPAIRS

HOME PC'S • LAPTOPS • SERVERS
INSTALLATIONS • MAINTENANCE • BUSINESS NETWORKS

Free estimates provided within 24 hours.

Recently moved to new workshops in PEMBURY.

Ring or call in to discuss your requirements.



- MG Computer Services -

"A reputable company established in 1982 with experienced staff"

145B Hastings Road - Pembury - 01892 826130

NEW SERVICE

Deliver myfeed.co.uk



PET & ANIMAL FOOD
Delivered To Your Door

Why shop with us...

- ☒ Huge range of products for all of your pets & animals
- ☒ Free delivery on orders over £25
- ☒ Regular delivery day
- ☒ Friendly & helpful delivery driver
- ☒ No need to be in, items can be left in a safe place
- ☒ Competitive prices on top brands

or visit us to shop
in store at

Broadfeed



6&7 Spa Industrial Park,
Longfield Road, Royal Tunbridge
Wells, Kent TN2 3EN

Order online at **www.delivermyfeed.co.uk** or call us on **01892 515 010**. Find us on **f** **e**

GROVEHURST - PEMBURY

Have any of our parishioners ever thought about or heard of the name Grovehurst? Where was it and what was its significance in the village? My interest in Grovehurst was only stirred when my wife Moira happened to mention that her great grandparents, Ambrose Young and Emily Birch, were married in March 1888 at the Old Church. Their family home then became the middle one of Grovehurst Cottages which are still in the High Street. Both of them were employed at the big house called Grovehurst - Ambrose was one of the gardeners and Emily was a laundry lady.



I have only been able to find out more about Grovehurst recently with the kind assistance of the occupant of the refurbished Coach House and I will come back to that subject in a later edition. I have mentioned Grovehurst Cottages in the High Street but there are also two lodge houses which were part of the estate and which are still in existence today. One is immediately on the left as you pass the entrance to Cornford Lane and the other one is on the left as you go towards Tunbridge Wells after you have passed the second roundabout by what was St. George's School. The construction of the A21 by-pass and the Tesco supermarket virtually cut the estate in half.

The big house was situated between Pembury Road and Cornford Lane and was situated on the Tunbridge Wells side of the A21. It may very well be that there was another lodge gate onto Cornford Lane at some time. It may also be that there are still people in the village who were familiar with Grovehurst, which was finally demolished in the fifties. Please get in touch if you are still out there. As you can see, the house was a very large building. We do know that at one time there was a butler, cook, two house maids, kitchen maid, page boy, governess, nurse, under-nurse, a coachman and untold gardeners. You can see what an impressive property this was and I'll come back with more information on this and of the families who lived there in the next issue of the Pembury Village News.

Hugh Boorman

PEMBURY U3A

As ever Pembury U3A is buzzing with activity and we are always ready to open our minds to a varied range of topics. We hold two lecture lunches every year which give us a chance to hear something a bit different while enjoying a tasty repast. We have learnt about the current conflicts in the Middle East, wild camel conservation in Mongolia and in April this year we had a talk about Picasso's Women which proved very enlightening about the artist – so all very different! Once a year we hold a lunch for our Group Leaders as a special thank you for all the work they put into heading their groups and following the lunch last year we had a talk by the charity Canine Partners and subsequently visited their premises near Midhurst for a demonstration of what these remarkable dogs are trained to do for disabled people.

With outings to Eltham Palace and Downe House and the annual holiday in Wales in May, we are looking forward to the summer and keeping our fingers crossed for a fine day when we are holding a Garden Party to celebrate the 800th anniversary of the signing of Magna Carta.

If you think you might be interested in joining us please come along to our Signing Up Day on 1st September at the Village Hall where you can speak informally to our Group Leaders and find out more about the Interest Groups we offer – and who knows in the future you might even feel like starting a new one yourself! You'll be sure of getting a friendly welcome!

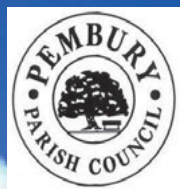
Sally Sturcke - Chairman



(Picasso's Women)

PICNIC

ON THE VILLAGE



GREEN

SATURDAY 11

JULY 2015

4.00pm TILL 8.00PM

BRING A PICNIC OR
BURGERS/HOT DOGS AVAILABLE FROM THE
CAMDEN ARMS STALL

ICE-CREAM VAN

MUSICAL ENTERTAINMENT PROVIDED BY
'MORE TEA VICAR' SPONSORED BY
THE CAMDEN ARMS AND PEMBURY'S 'SOLD OUT'

PEMBURY PARISH COUNCIL PRESENTS THE ANNUAL

PRIDE IN PEMBURY HORTICULTURAL

COMPETITION

CATEGORIES ARE:



- BEST FRONT GARDEN (DOMESTIC DWELLINGS ONLY)
- BEST HANGING BASKET/CONTAINER (DOMESTIC DWELLINGS ONLY)
- BEST ALLOTMENT
- BEST COMMERCIAL FRONTAGE (LARGE)
- BEST COMMERCIAL FRONTAGE (SMALL)
- BEST VISUAL EFFECT



SEND IN THE FORM BELOW TO THE PARISH OFFICE, LOWER GREEN
RECREATION GROUND, LOWER GREEN ROAD, PEMBURY, TN2 4DZ
JUDGING WILL TAKE PLACE EARLY AUGUST
CLOSING DATE FOR ENTRIES FRIDAY 24 JULY 2015

PRIZES AND CERTIFICATES TO BE AWARDED AT THE WINNERS' TEA

Category of Entry (please tick)

- ☐ Best Front Garden (Domestic dwellings only)
- ☐ Best Hanging Basket/Container (Domestic dwellings only)
- ☐ Best Allotment
- ☐ Best Commercial Frontage (large)
- ☐ Best Commercial Frontage (small)
- ☐ Best Visual Effect



Please complete using BLOCK CAPITALS

Name of Entrant

Name of Person nominating entry (if different)

Full Address of Entrant

.....

The Small Print: The competition is not open to Parish Councillors or Parish Council employees or their close families. Garden entries must be within the boundaries of the Civil parish. Judges will not be permitted to discuss entries and the date of judging will not be published in advance. The judges' decision is final and no correspondence will be entered into. The names of the winners will be published in Pembury Village News and the winner of each category must be willing to participate in a publicity photograph. Entry to the competition is deemed acceptance of these rules.

AN UPDATE FROM PEMBURY'S POLICE COMMUNITY SUPPORT OFFICER - NICK BROWN

In December 2014 motor vehicles parked along The Coppice and Knights Ridge, Pembury, were damaged, resulting in expensive repair costs for the owners. After the victims were visited by officers and intelligence gathered a thorough investigation was conducted. Suspects were identified and spoken to by officers. However, after all possible lines of enquiry were exhausted and due to a lack of evidence unfortunately no further police action could be taken.

If anybody has any further information that they feel may assist police with their enquiries please contact 101 (non-emergency) quoting reference YY/024716/14. Crime stoppers can also be contacted on 0800 555 111, where you can remain anonymous.

With summer approaching and most of us already enjoying the warmer weather, from a policing perspective the longer days present some new challenges.

One of these challenges will be how we continue to respond to complaints about noise and antisocial behaviour (ASB) as people stay out later and often congregate in public areas.

ASB takes many forms and whether it is loud music, or groups of youngsters drinking alcohol and perhaps intimidating passers-by, it can make people's lives a misery.

Over the past six months Kent Police has received a number of reports concerning ASB in Pembury and as your local PCSO I'm determined that we continue to enforce the message that this type of behaviour won't be tolerated in the village.

We have adopted a number of approaches to tackle this issue and we work in partnership with other agencies to achieve this. An example of this has been the help we have received from the Kenwood Trust charity, which has regularly attended areas where young people congregate. This organisation engages with young people and gives advice about the consequences and potential dangers of alcohol and drugs, as well as the disadvantages these substances may cause them in the future.

This engagement has also coincided with some positive changes around how we deploy police officers in parts of Pembury where we know that problems have been reported, which include areas such as the Recreation Ground and Romford Road. The changes have allowed us to increase visibility of patrols and I hope that, as a result, the amount of reported incidents of ASB will continue to decline.

On a different subject, one of the things I often hear complaints about is inconsiderate parking in some areas of Pembury. I appreciate that some of the roads in the village are very narrow and as such, leniency is often given for vehicles which are parked on pavements. However, when parked vehicles are restricting access for pedestrians who are then forced to use the road, this is totally unacceptable. Please remember that children and older people are particularly at risk if they are forced to navigate parked cars and walk in the road.

Motorists really do need to give more consideration otherwise this may result in further action being taken by the police or other agencies.

Nick Brown

KENWARD TRUST WORK IN PEMBURY

Please find below a summary of what we are doing in Pembury's Recreation Ground and information about Kenward Trust.

We have been working with the young people there since September 2014 to reduce antisocial behaviour within the park and surrounding areas, and to address negative behaviours such as taking alcohol and/or drugs and committing crime. Each visit lasts 1-2 hours and we speak to an average of about ten to fifteen young people between the ages of 13 - 17/18 years of age.

These young people are very receptive to us and talk quite openly about themselves. They also respond positively to the delivery of our outreach workshops. We have now started to develop relationships with these young people with a view to instilling an understanding that they are part of the greater community. It is also our aim to open their eyes to see the beneficial effect that positive behaviour can have not only on their local environment, but also on themselves and their families and friends.

We also aim to make the young people aware of the serious consequences that may result from negative behaviour and making wrong choices, by delivering factual information on the law and potential health risks.

Kenward Trust Youth Services have been working with young people and communities since 1996. The project was called Grey Zebra and then changed to Kenward Community Outreach Services. The project is an Information, Education and Intervention service that is funded by three borough councils. Tunbridge Wells Borough Council funds outreach work like the work we are doing in Pembury. Once an area has been identified, Kenward will go and profile the area to see if the issues it is facing are drug or alcohol related. If they are then an outreach team will make contact with the identified group and start building a relationship with the aim of giving information and education around issues and drug use. This is done with men and women who volunteer from open prisons or who have been through a drug and alcohol rehabilitation centre. These workers are supported by a qualified worker from a youth and community background or counselling/social work. Having the balance of volunteers and professionals helps the young person to explore the issues of substance misuse and antisocial behaviour. We also go into schools, colleges, youth clubs or wherever young people are meeting.

We also run Kenward Intervention Programme (KIP). This programme is for young people who are using or caught up in some way related to substance misuse/antisocial behaviour. Groups are invited to come to Kenward Trust Rehabilitation Centre and take part in a day's programme, where they will hear life stories, take part in activities looking at drugs and the law, meet current serving offenders who talk about prison life, and ex-offenders who help young people look at how their lives are now affected when getting employment and travelling abroad due to a drug and alcohol criminal record. What the rehab shows is that men and women from all walks of life can get caught up in addiction and visiting the rehab centre helps young people to distinguish the reality of addiction from the myths and perceptions. This was a very powerful day that helped young people to explore the consequences of life which can be turned upside down and ruined due to this behaviour. This project was very successful last year and was funded by Anne Barnes the Police Commissioner. We hope to get some funding this year to be able to run KIP again which will give young people like the ones we meet in Pembury, the opportunity to explore their behaviours before ending up with a criminal record for drug use.

John Shanley - Project Manager Kenward Community Outreach Service



- New Patients Welcome
- Children seen under NHS
- Full range of preventative treatments
- Cosmetic dentistry (veneers, crown & bridgework)
- Tooth Whitening
- Implant Dentistry
- Digital x-ray
- Direct access to Hygienist
- Relaxing, friendly environment

Dr.Nelis du Plessis B.Ch.D.(Pret)
Katharine Brice Hygienist

Address: 67 Hastings Road, Pembury, Tunbridge Wells, Kent, TN2 4JS
Tel: 01892 823044 - Email: info@pemburydentalsurgery.co.uk
Web: www.pemburydentalsurgery.co.uk

Committed to Quality Dentistry

Property Owners and Landlords

Looking to sell or let?

Call 01892 822880
or 01732 771616 now!

BarnesKingsnorth



EMERGENCY SERVICES FUN DAY

13th JUNE 2015
11:00 AM TO 1:00 PM

£1 ENTRY
Under 2's Free



@ PEMBURY SCHOOL HOUSE NURSERY



Graded 'OUTSTANDING' from Ofsted 2015

Everyone is welcome to join in the fun.
You can find us next to Pembury Primary School.



**Kent Fire &
Rescue Service**



A NEW SEASON BEGINS AT PEMBURY BOWLS CLUB

As I draft this article our new bowls season is just two days old and we have already been visited by friends from Bayham & Lamberhurst Bowls Club and from Cranbrook Bowls Club, both to play friendly matches with us. On virtually every weekend now until the end of September we will be playing friendly matches with other local clubs, either on our Green or theirs. These matches may be mildly competitive but essentially they are more of a social occasion providing the opportunity to enjoy our sport by playing with old and new friends from these clubs. Most matches consist of twelve players from each club, divided into four teams of three players and using four lanes of the green. Playing from one end of a green to the other is known as an end and each match normally consists of eighteen ends. Invariably, however, we take a break after nine ends to sit down and entertain the visiting players with a cup of tea and a biscuit or sandwich or piece of cake. From start to finish the match will take approximately three hours and is a very pleasant way to enjoy a Saturday or Sunday afternoon. These matches are the mainstay of our bowling calendar and members of all abilities are encouraged to participate in them - teams being selected from lists of volunteers which members can complete in the club house.

For the more competitively minded player we also hold internal competitions to establish the annual club champions for individual players, for teams of two players (pairs) and teams of three players (triples). We also enter teams into local leagues, these games normally being played once a week on weekday evenings.

Members are also able to play one another at any time that the Green is not reserved for Friendly, Competition or League matches. Monday and Friday afternoons are also informally reserved for friendly play between members.

Apart from playing bowls we also hold two quiz nights in our club house during the playing season and a club barbeque in August.

Bowls tends to be thought of as being an older person's game but that simply reflects that the very real skills needed to play the game can be retained by those of us categorised as senior citizens and does obscure the fact that players from teenage onward can display those same skills and with due application play the game to a high standard. It is also a game that can be played to the same high standards by men and by women and the friendly matches described at the start of this article always contain a mix of men and women. Pembury Bowls Club welcomes new members of all ages, whether current players or newcomers to the game. If you would like to try the game, or find out more about us, please contact me on 01892 823915 or, if you are passing the Green and see a member, why not introduce yourself and let them know of your interest.

Norman Brown



SHOT DOWN OVER PEMBURY - PART TWO

Leslie Pidd - born in 1918 and served with 238 Squadron, Royal Air Force Volunteer Reserve from 7th December 1938 as a Sergeant. He had already fought in the battle for France and the evacuation from Dunkirk. By early September 1940, 238 was back at Middle Wallop, Hampshire and in the thick of the battle. The squadron was often among the first to intercept enemy fighters, which could cross the English Channel in six minutes. On 15th September (Battle of Britain Day) there had been three attacks launched by the Luftwaffe. Leslie was flying Hurricane P2836 that day and was in combat with at least 5 of his squadron. There was fierce fighting in defence of London and this particular battle took place over Kent. At 3pm after three of his squadron colleagues were forced to leave the fray with their aircraft damaged, Leslie's Hurricane was claimed as shot down by a Messerschmitt Bf 110. His plane crashed into an oak tree in the grounds of Kent College and came down quite close to the main school building. It is believed he came down with his aircraft and did not manage to bail out. He was buried with full ceremonial honours, including an RAF flypast, in the cemetery of St. Peter's Church in Woodmansey, Yorkshire. He had celebrated his 22nd birthday a month earlier and had been due to marry his fiancée Marjorie Noble on his next home leave.



In 1975 a 'recovery' group from Brenzett Aeronautical Museum came with metal detectors and located pieces of the plane. On 15th September 2010 – 70 years to the day he was shot down and killed, a mosaic plaque was unveiled at the School as a result of a project by one of its pupils, Vicky Vizard, 13, whose father Steve had researched the Battle and excavated the site. Around 30 relatives attended the ceremony.



Ross Smither - born in London in 1912, Ross joined the Royal Canadian Air Force on 10th September 1930. He was with No.1 (RCAF) Squadron when it arrived in the UK on 20th June 1940. He claimed a Me109 damaged on 31st August and a Me110 destroyed and another damaged on 4th September. He was shot down and killed by Me109s over Pembury on 15th September. He was 27 years old and is buried in Brookwood Military Cemetery, Surrey. His name is on the Battle of Britain Monument on the Victoria Embankment, London. His brother Frank was also shot down on 5th June 1942 in France.

Richard Snow



Pembury, Kent

personal touch computers
www.pt-c.co.uk

networking



Home and business IT

Up front costs, no unexpected hourly fees

security



Laptops/custom PCs

Wireless / ADSL / CABLE installs, helpful advice

reinstallation



Callouts available

Business hours / evenings and weekends

upgrades

PC/server builds

Aaron Taylor 07545 996 410
email – aaron@pt-c.co.uk

repairs

**KEVIN
NORMAN**
MBChA MSSCh DipPodMed
Chiropody • Podiatry Care



Friendly professional service for all your foot care needs.

Surgery and home visits available. HPC registered.

Reduced fees for over 70s at surgery appointments.

67 Hastings Road, Pembury, TN12 4JS.

All major cards accepted

Surgery: 01892 822855 Mob: 07901922901

SYDNEY SPARROW - by Willow Wildbrook

The sun is rising as Sydney Sparrow rouses himself from his slumber. He has been roosting with the other sparrows in a hedge, but now it is time he got up to find something to eat, just as you do every morning.

Before flying off, Sydney sings with the other birds. It may sound like a bit of a drag to sing with your neighbours every morning, but it is something they do together since they live as a community. Their song is a combination of twittering, cheeps, and chirrups. There is safety in their numbers because the more eyes they have looking for danger, like predators such as cats and birds of prey, the more likely it is they will spot it. If Sydney, or another sparrow, sees a threat, they give a warning call and everyone can rush to safety.

Sydney is a cute, cheeky bird. The top of his head is grey, there is chocolate brown down the side of his head and he has a black bib. The top of his body is a mixture of brown, tan and grey and his underside and wing bars are white. His adorable, fluffy little cheeks are a dirty white colour. House sparrows like Sydney barely weigh anything (22-32g) and they need to eat enough food every day to put on enough weight so they can survive night time outside.

You can help Sydney and his friends by putting out some food for them; sparrows really like seeds but they also eat insects when they are chicks or are raising chicks. They will readily visit bird feeders; make sure they aren't placed too far from cover just in case predators visit. Put out some mixed seeds and sunflower hearts all year round. If you have a garden, plant a variety of plants to provide seeds and insects for sparrows to eat as well as brightening up your space. Remember to provide water as well.

Sparrows are important to the balance of nature. They eat many seeds and, as a result, help disperse them. The bad news for sparrows like Sydney is that they are food for predators such as birds of prey and cats.

As Sydney is hopping around foraging for food, his thoughts have turned to the other very important thing he needs to do. It is spring now, the days are getting longer, and every young sparrow needs to find a mate. Sydney is looking for a female sparrow; he is looking for someone strong, fit, and healthy with whom to raise a family. Typically, sparrows mate for life. To find his mate, Sydney first needs to scout out a nesting site.

Sydney needs to look his best to attract a mate; females choose their mates based on the nest site the male finds, how well he defends it, and his plumage. Sydney keeps his feathers clean by bathing and he removes pests from his plumage by dust bathing. You can help Sydney and other sparrows by providing birdbaths and bare patches of dry soil, perhaps in a sunny spot.



After feeding and bathing, Sydney starts looking for a nest site, flying over gardens searching for cavities that will be big enough and safe from predators.

Sydney would love to nest in a hole in a building or some thick vegetation near the rest of his colony, but suitable places are getting harder to find. You can give sparrows a hand by putting up nesting boxes for them; they need to be 2-4 metres high facing south with a 32mm entrance hole. Flying over his third garden, Sydney finds a new nest box has been put up. It is well placed, nice and high, and out of direct sunlight. He goes in to check it out and he is in luck;

SYDNEY SPARROW - Continued...

no one else has found the box! He claims it as his own. Sydney starts calling just outside the box to attract a female, he will do this regularly and start collecting material for the nest until he has a mate.

After a while Satin, a lovely, healthy female approaches Sydney. Satin, like all female sparrows, is duller in colour to the males. Her wings are much the same as Sydney's, but streakier. Her underside is a tawny colour, she has tan eye lines and the top of her head is brown, not grey. Sydney is very pleased; he really likes Satin. He shows off with a kind of dance, showing his plumage and bib.

After a ritual of flirtation Satin agrees to be Sydney's mate; they will stay together for life. Sydney is very fortunate to have found a nest and a mate, many birds are not so lucky. Unpartnered sparrows will help mated pairs raise their young. This is a good strategy as it improves the survival rate of the chicks and, if one of the mated pair dies, one of the helpers is more likely to be chosen as a replacement mate.

Sydney and Satin finish building their nest together. The outside is made of grass and the soft inside is made of feathers.

At last, their nest is built! It's time for Satin to lay her eggs. House Sparrows lay four or five eggs that are light grey and speckled with grey and brown.

Sadly, as it is Sydney and Satin's first season, it is unlikely they will breed successfully. Don't be disheartened, they have found each other and will nest together each year, having two or three broods a year, and will get better at it.

Both parents incubate the eggs for eleven to fourteen days and both parents feed the young once they have hatched. After about another fourteen days the young leave the nest but the parents keep feeding them for eleven to nineteen days. Baby sparrows look a bit dull, they have pink bills and extra wide mouths; this helps the parent birds feed them lots of insects to help them grow.

I'm sure Sydney, Satin, and the other house sparrows will do well in the future and have many chicks; that is, if they have your help. As long as they have somewhere to nest and plenty of food and water, they will thrive.



Try out some of the tips in this story and keep an eye on your garden for these cheeky chappies!

In the UK house sparrows are in decline and are currently red-listed [2014]. This means they have suffered at least a 50% reduction in the UK breeding population in recent years, and are of high concern conservation wise.

Free story download: <http://t.co/ykAh8poZwr>

Free colouring in page download: <https://flic.kr/p/nHp9zK>
willowwildbrook@gmail.com



Steffan Keily

FOR ALL YOUR FENCING REQUIREMENTS

All types of fencing supplied and fitted
Close board, panels, palisade, post & rail, gates

FREE ESTIMATES FULLY INSURED

HOME: (PEMBURY) 01892 520150 MOBILE: 07941 138060

Dawn Hodgson MSSCh MBChA Chiropodist

HPC Registered - Home Visits

- Police checked
- Professional Advice and Friendly Care
- Diabetic Assessment and Maintenance
- Verruca Treatment
- Ingrowing Toenail Care



**7 Greenleas, Pembury,
Kent TN2 4NS**
Mobile: 07761 583756
Tel: 01892 824916

- Treatment for Fungal Infections
- Day and Evening Appointments available
- Discounts for Over 70s
- Simply Health Refund Available

PRIVATE TUITION

FOR 7-11 YEAR OLDS

Experienced teacher offers:
Booster English and Maths.
Preparation for 11+ and
Common Entrance/Scholarship exams.
French and German to GCSE

Enquiries to:
Mrs. Nicolette Collins
MA Oxon, PGCE

Tel: 01892 822093 / 07826 523251
nicolette5@hotmail.co.uk

R Goode Plastering

All plastering & Rendering works

15 years experience Contact for free
quote



1 Herons Way
Pembury TN2 4DH
Tel: 01892 319853 Mobile: 07900 907445
E-Mail: rgoodeplastering@hotmail.co.uk

HEALTHY OPTIONS FOR PEMBURY

People were soon joining in the Zumba Dancing (pictured) at Pembury's Health Fete on 25th April. Less energetic exercise was also on offer, a memory game and practising cardiopulmonary resuscitation (CPR) as well as making a smoothie while cycling!

The event, organised by the Waterfield House Practice Patient Participation Group (PPG), brought together healthy options for people from gardening to mental health exercises as well as blood tests and reflexology.

A raffle was run which raised money towards the cost of a cabinet for a defibrillator to be put outside the surgery, but the main objective of the fete was to show people the many ways we can enjoy ourselves in staying healthy.

Earlier in the same week the Chairman of the Clinical Commissioning Group (CCG), Dr Bob Bowes, told an audience of the Pembury Society that we had to 'grow up when facing issues concerning death and know that there was a time to die'. Deferring that moment, and staying healthy as close to that time as possible is something which is best started at a young age.



The PPG will be looking at ways of encouraging people in Pembury to stay healthy for their own benefit and to free up the GPs' time to look after those who really need the medical attention when they need it.

Thank you to everyone who helped to make the fete such a success. If you would like to know more about the PPG, please contact me through the surgery.

*Justin Cumberlege,
Chair of Waterfield House Practice PPG*

PEMBURY GARDENER'S SOCIETY SPRING SHOW

The Pembury Gardeners' Society held its Spring Show on Saturday 28th March at the Village Hall. Entries were slightly down on last year which was probably due to the wet winter and cold/late spring. We were lucky to have had a show as some societies had to cancel due to lack of entries. The Judges comment was "These are the best quality blooms we have seen this year." Listed below are the award winners:

DAFFODILS

The Hextable Award for most points in classes 1 to 27 - Steve Jones
Daffodil Society Medal for Best Exhibit in classes 1 to 27 - Mrs H Wood

Daffodil Society Certificate for Best Bloom in classes 1 to 27 - Brian Fryer
Kent Federation Certificate for Best Exhibit in classes 29 to 42 - Miss M Pettitt

FLORAL ART

Doris Down Award for most points in classes 46 to 49 - Mrs M Wickham
Society Certificate for best exhibit in classes 46 to 49 - Mrs A Purton

COOKERY

Society Award for most points in classes 53 to 59 - Mrs H Wood
Kent Federation Certificate Runner Up to award winner Mrs J Aust

HANDICRAFT

Michael Pavely Memorial Award for Best Exhibit in classes 62 to 65 - Miss M Pettitt

The Society would like to thank all exhibitors and all who came to the show as without them it would not have gone ahead.



**The Summer Show
is on June 27th**

John Wood

RECIPES

STIR FRIED SALMON & BROCCOLI

- 1 Red Pepper – seeded and thinly sliced
- 125g (4oz) Broccoli Florets
- 2 Teaspoons Olive Oil
- 2 Spring Onions - sliced
- ½ Red Chilli – seeded and thinly sliced
- 2 Salmon Fillets – cut into strips
- 1 Clove Garlic
- 2 Teaspoons Soy Sauce



1. Heat the oil in a wok or large frying pan
2. Add the pepper, chilli, broccoli and spring onions and stir fry over a high heat for 3 – 4 minutes
3. Add the salmon and soy sauce and cook for 2 minutes – stirring gently
4. Serve with noodles or garlic toast

SIMPLE LEMON MOUSSE

- Zest of 1 lemon
- 1 lemon jelly
- 1 small can evaporated milk
- 2 eggs



1. Put the evaporated milk into a bowl and whisk until thick
2. Separate the eggs and whisk the egg white until soft peaks form
3. Melt the jelly in 2 tablespoons water
4. Tip jelly into evaporated milk, add egg white and yolks and whisk together until well mixed
5. Add lemon zest and mix together.
6. Refrigerate until set

AWAYDAY FUN THAT SUPPORTS YOUR LOCAL HOSPICE

If you're planning to enjoy a fun day out, there's a rewarding way to put an extra feel good factor into the trip by combining an awayday with raising money for charity.

Hospice in the Weald, renowned for its compassionate care, runs its own travel club. And everyone is welcome to join. The aim is to give individuals or groups a chance to get together and socialise in a fun and friendly way. Membership is just £10 and for that, travellers can pick from a lively range of outings.

Throughout 2015, the club is running excursions and trips to Cambridge, Stratford-upon-Avon and London, among many other beautiful and fascinating destinations, all by luxury coach. Club members can also discover the secrets of the wartime code-breakers at Bletchley Park and explore some of the real-life stories behind Wolf Hall at Hampton Court Palace. And later in the year, there will be visits to a London Christmas show as well as a special overnight trip to the magical Christmas markets in Bruges.

The Travel Club is just one way of many in which Hospice in the Weald raises funds to continue providing care for terminally ill patients, their families

and carers in West Kent and East Sussex. The Hospice is not in the NHS and has to find £6million a year to carry on its wide range of services. Last year the Travel Club raised £15,000 – enough to run the Hospice Day Service for two weeks or to fund care for four patients in the In-Patient Unit.

Lyn, one of the club members says: "The friendly atmosphere of the Travel Club outings helps for a relaxing day, especially if you are on your own. The convenient parking and ease of travelling by coach makes it an enjoyable and entertaining day out."

As well as the annual fee of £10 per person for new and existing members, there is a special price of £18 when purchasing two memberships.

The Travel Club brochure is sure to offer something of interest to tempt you on board, so please contact Maddy Boyle - Community Fundraising Assistant, on 01892 820533 or maddy.boyle@hospiceintheweald.org.uk if you would like to receive a copy or need further details.

You can be sure of a great day out and a helping hand for a great cause too.

CRIME REPORT

Well, we got off lightly this winter regarding the weather but I wish I could say the same about the recorded crime figures. The quarterly figure for Jan, Feb and March shows a reduction of 22, from the last quarter of 2014 of 80 down to 58. This is wonderful news but we have to be careful that we don't get complacent and accept 58 as an acceptable figure because it is definitely not - a crime in under every other day.

The main reductions were in burglary from dwellings and other from the previous quarter of twelve down to four this last quarter but theft from motor vehicles more than doubled from four to nine. Criminal damage fell by more than half from eighteen down to eight and theft offences, excluding vehicles down from twenty two to fourteen. Unfortunately drug offences are back on the scene again, from nothing in the last quarter but up to six this time.

Please, even if you report any crime, especially violence or drugs anonymously, please make that call. The Police need our help as much as we need theirs; if we don't work together it is a very bleak future. Unfortunately, in all professions and walks of life

there will always be someone who lets down the team or their work colleagues but we still must work to a code of conduct.

Unfortunately the village is still plagued by litter bugs/fly tippers. There is no excuse for just dropping your litter – if there is no rubbish bin TAKE IT HOME. I can't wait for the day when we actually get a fly tipper in the dock. There are also too many dog owners abusing their right to have a dog by leaving their dogs mess on the footways and pavement.

Before I finish moaning have you noticed the state of some of the street signs around the Village, especially at the top of the Village Green and the bottom of Henwood Green Road? What with the litter, dog's mess and road signs, in some areas we look pretty grotty. I think it is KCC's job to look after the signs but street cleaning and litter removal are the responsibility of the Borough Council. I will clean the Henwood Green Road one if other villagers will look after the others. Let us smarten up a bit.

Be careful out there.
Hugh Boorman



CRIME FIGURES

Recorded crime in Pembury

If a road name does not appear in the table below, it is because no crimes have been reported to Kent Police in that road during the specified period.



Crime type by reported month	Violent Crime	Burglary Dwelling	Burglary Other	Theft From Motor Vehicle	Theft of Motor Vehicle	Criminal Damage Offences	Theft Offences (exc vehicle offences)	Drug Offences	POSSESSION OF WEAPONS	Total recorded crime
January 15	3	1	0	7	1	3	2	1	0	18
February 15	6	2	1	1	0	3	6	5	1	25
March 15	6	0	0	1	0	2	6	0	0	15
January - March 2015	15	3	1	9	1	8	14	6	1	58

	Violent Crime	Burglary Dwelling	Burglary Other	Theft From Motor Vehicle	Vehicle Interference	Criminal Damage Offences	Theft Offences (exc vehicle offences)	PUBLIC ORDER OFFENCES	POSSESSION OF WEAPONS	Total recorded crime (EXC BURGLARY DWELLING & OTHER)
A21 A	0			0	0	0	1	0	0	1
AMBERLEAZE DRIVE	0			1	0	0	0	0	0	1
BEAGLES WOOD ROAD	0			0	0	0	1	0	0	1
BEECH HURST	0			1	0	0	0	0	0	1
BELLFIELD ROAD	1			0	0	0	0	3	1	6
CHURCH ROAD	1			2	0	0	0	0	0	3
CORNFORD LANE	0			0	0	0	1	0	0	1
GREENLEAS	0			0	0	0	0	0	0	1
HASTINGS ROAD	0			1	0	2	0	0	0	3
HENWOOD GREEN ROAD	0			0	0	2	1	1	0	4
HENWOODS CRESCENT	0			1	0	0	0	0	0	1
HENWOODS MOUNT	0			0	0	0	0	0	0	1
HERONS WAY	0			1	0	0	0	0	0	1
HIGH STREET	2			0	0	0	5	0	0	7
KNIGHTS CLOSE	0			0	1	0	0	0	0	1
LOWER GREEN ROAD	1			0	0	0	0	0	0	1
MAIDSTONE ROAD	0			0	0	0	1	0	0	1
PEMBURY ROAD	2			0	0	1	2	0	0	5
PENNS YARD	0			1	0	0	0	0	0	1
PETERSFIELD	0			0	0	1	0	0	0	1
ROMFORD ROAD	0			0	0	1	0	0	0	2
SNIPE CLOSE	1			0	0	0	0	0	0	1
THE GLEBE	0			0	0	0	1	0	0	1
THE GROVE	2			0	0	1	0	0	0	3
TONBRIDGE ROAD	5			1	0	0	1	2	0	9
TOTAL RECORDED CRIME (EXC BURGLARY DWELLING & OTHER)	15			9	1	8	14	6	1	58

The data above was extracted from Kent Police's LIVE crime recording system GENESIS on 2nd April 2015 at 10:00 hrs, and is therefore subject to change.

TUNBRIDGE WELLS AND DISTRICT CITIZENS ADVICE BUREAUX

I bought a new mobile phone six months ago, and I used the signal checker on the website, but I never have any signal at home or work at all. I want to cancel my contract and go back to my old mobile company as I always had good service with them, but my new provider says I'll have to pay all 18 months of the contract remaining if I want to cancel. I can't afford to pay that all at once and a new contract, but I also can't have a mobile phone that never works when I need it. What can I do?

Most mobile phone contracts last 24 months, but often they don't specify minimum standards of service, so it can be tricky to get out of them without paying a hefty fee. Your best bet is to keep a log of times when your phone doesn't work. Then contact your service provider and ask them if there is anything they can do. This might solve the problem without you needing to cancel.

It might say something in your contract about how much reception you should get: if so you should be able to cancel the contract without paying. Unfortunately, you can't rely on what an online coverage checker will say as they're just a guide and will only ever give an idea of the average signal someone can expect outside in that area.

If the phone doesn't work in your house or workplace but does work outside, the problem might be with those buildings themselves. In that case you wouldn't normally be able to cancel without paying. It might be that the signal just isn't strong enough, so you should ask your provider to carry out a signal strength check.

If there's no signal in your whole area, you might be able to cancel under the Supply of Goods and Services Act. Very poor service most of the time might mean the network is breaking your contract. Some contracts have terms and conditions which mean they're allowed to not provide service sometimes, so you need to get advice to see if this applies to you.

Before anything else, contact your service provider, share any evidence of poor service and explain why you should be let out of your contract early. They might well allow you to cancel.

**And if you need more advice, contact us,
or call our consumer service number
on 03454 04 05 06**

www.adviceguide.org.uk
advice@twcab.cabnet.org.uk **01892 533880**
advice@cranbrook.cabnet.org.uk **01580 714936**



DARTSAVE

This is a useful website that can save people being stung if they use the Dartford Crossing, which after registration will protect those of us who sometimes forget to pay after use, saving £70.

www.dartsave.co.uk

Malcolm Swan (a Pembury resident)

FOR YOUR DIARY

Village Market – Village Hall, Tuesday 9am – 11.30am – term time only.

Town and Country Housing Group Clinic – last Tuesday in the month.

CAB – Pembury Library – alternate Tuesdays 9.30am – 11.30am.

Dates are published on www.pemburypc.kentparishes.gov.uk under site pages.

Community Coffee Shop – Pembury Pavilion, Recreation Ground – Mondays 9.30 – 12 noon

June

8th	Parish Council	8pm	PC Office – Recreation Ground
11th	Ladies Thursday Club	2-4pm	Village Hall Meeting Room
13th	Pembury School House Nursery	11-1pm	Emergency Services 'Fun Day'
16th	CAB	9.30-11.30am	(next to Pembury School)
20th	PSA Summer Fair	11-4pm	Pembury Library
20th	Midsummer Barn Dance	7.30-10.30pm	Pembury School
27th	Dad and Me	10-11.30am	Pippins Farm, Maidstone Road
27th	Gardeners' Summer Show	2-4.30pm	Pembury Baptist Church
27th	Strawberry Cream Tea	2.30-4.30pm	Village Hall
30th	CAB	9.30-11.30am	Pembury Old Church

July

3rd	Evening WI	7.45-9.45pm	Village Hall
4th	Footpath Walkers	2.15pm	Meet at Bo-Peep
6th	Flower Workshop	8pm	Pembury Baptist Church
6th	Parish Council	8pm	PC Office – Recreation Ground
7th	U3A AGM	2-4pm	Pembury Village Hall
9th	Ladies Thursday Club	2-4pm	Pembury Village Hall
11th	Picnic on the Green	4-8pm	Village Green
14th	CAB	9.30-11.30am	Pembury Library
25th	Dad and Me	10-11.30am	Pembury Baptist Church
26th	Hospice in the Weald	8.30am-4pm	Classic Car Rally – For details call Sara Clark 01892 820586
28th	CAB	9.30-11.30am	Pembury Library

August

1st	Footpath Walkers	2.15pm	Meet at Stone Court Lane Bus Stop
3rd	Flower Workshop	8pm	Pembury Baptist Church
4th	U3A	2-4pm	Pembury Village Hall
7th	Evening WI	7.45-9.45pm	Village Hall
11th	CAB	9.30-11.30am	Pembury Library
13th	Ladies Thursday Club	2-4pm	Village Hall
25th	CAB	9.30-11.30am	Pembury Library

September

1st	U3A	2-4pm	Village Hall
4th	Evening WI	7.45-9.45pm	Village Hall
5th	Footpath Walkers	2.15pm	Start opposite the Camden

Richard Snow has taken over responsibility for updating the Village Diary, which can be viewed at www.pemburypc.kentparishes.gov.uk and www.pembury.org for a fuller listing.

The diary serves two purposes. Firstly to enable event organisers to check the diary before arranging an event to avoid some clashes. Secondly to enable everyone to know what is happening in the village. It is important that information is sent to Richard at events@pembury.org with date, times, title of event, venue and contact details.

YOUR REPRESENTATIVES

PARISH COUNCIL



Cllr Mrs June Crowhurst

44 Elmhurst Avenue, TN2 4DA

Tel: 824873

Chair of Parish Council

Chair of Amenities, Christmas Lights and Pride in Pembury (inc. Public Relations) Working Group



Cllr Sean Cawley

c/o Henry Paul Funerals

10 High Street, TN2 4NY

Tel: 825505

Chair of Environment/Environmental Issues

(inc. Allotments & Burials) Working Group



Cllr David Coleman

22 Ridgeway, TN2 4ER

Tel: 823402

Vice Chair of Parish Council

Chair of Planning & Highways Working Group



Cllr Steve Rose

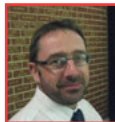
84 Woodhill Park, TN2 4NP



Cllr Patrick Gillan

1 Knights Close, TN2 4EL

Tel: 825324

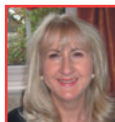


Cllr Paul Roberts

107 Beagles Wood Road, TN2 4JJ

Tel: 822602

Chair of Audit, Finance and Personnel Working Group



Cllr Mrs Chris Snow

1 Cornford Park, TN2 4PW

Tel: 825428



Cllr Mrs Shelley Harris

29 Lower Green Road, TN2 4DZ

Tel: 822544

Vice Chair of Parish Council



Clerk to Pembury Parish Council

Barbara Russell,

c/o Parish Council Offices,

Lower Green Recreation Ground

Lower Green Road

Pembury, TN2 4DZ

Tel: 823193

Email: clerk@pemburypc.kentparishes.gov.uk

Deputy Clerk to Pembury Parish Council

c/o Parish Council Offices,

Lower Green Recreation Ground

Lower Green Road

Pembury, TN2 4DZ

Tel: 823193

Email: deputy@pemburypc.kentparishes.gov.uk

BOROUGH COUNCIL

Cllr Paul Barrington-King, 57 Henwood Green Rd, TN2 4LH Tel: 07899 731696

Cllr Mike Tompsett, 14 Gimble Way, TN2 4BX Tel: 822711

Cllr Sue Nuttall - 6 Greenleas TN2 4NS Tel: 07973 273244

COUNTY COUNCIL

Mr Chris Hoare

KCC, Sessions House, County Hall, Maidstone, ME14 1XQ

VILLAGE ORGANISATIONS

AGE CONCERN

Mrs Sandra Springett. Tel: 522591

AMBERSIDE DANCE STUDIO

Principal: Sadie Van Der Spuy. Tel: 07734 053509

www.360dance.co.uk

CATHOLIC CHURCH

Fr. Ed Tomlinson. Tel: 825009

CONSERVATIVE PARTY

Simon Bishop, 18 Cornford Park. Tel: 822302

FRIENDS OF PEMBURY PARISH CHURCH

Chairman: Mrs S. Clarke, Little Stanton, Romford Road.
Tel: 823932

GUIDES, BROWNIES AND RAINBOWS

Mrs M. Allan, 9 Henwood Green Road. Tel: 822373

HOSPICE IN THE WEALD

Maidstone Road. Tel: 820500

KENT COLLEGE

Headmistress: Mrs Sally-Anne Huang. Tel: 822006

KENT COLLEGE PREP SCHOOL & NURSERY

Headmistress: Mrs Ann Lawson. Tel: 820204

LIBERAL DEMOCRATIC PARTY

David Mills. Tel: 825577

LITTLE RASCALS

c/o PBC Office. Tel: 825590

MULTIPLE SCLEROSIS SOCIETY

TW District. Tel: 0845 6037882

NATIONAL FEDERATION OF THE BLIND, UK

Michael Coggles. Tel: 822705

NEIGHBOURHOOD WATCH

Janet Ditchett. Tel: 822586

OUT AND ABOUT CLUB

Sue Giles. Tel: 823318

PEMBURY ATHLETIC (YOUTH) FOOTBALL CLUB

Colin Forward. Tel: 825436

PEMBURY BAPTIST CHURCH

Church Office. Tel: 825590

PEMBURY BOWLS CLUB

Phil Griffin. Tel: 01892 823129

PEMBURY BRIDGE CLUB

Geoff Plummer. Tel: 824652

PEMBURY COMMUNITY LINK GROUP FOR

HOSPICE IN THE WEALD

Graham Hayler. 9 The Gill. Tel: 824680

PEMBURY COMMUNITY WORKING PARTNERSHIP

Parish Office. Tel: 823193

PEMBURY CRICKET CLUB

Secretary/Treasurer: Mr A Weaver, 51 Heskett Park
Tel: 824362

PEMBURY DAY CENTRE

c/o PBC Office. Tel: 825590

PEMBURY ECO GROUP

Rick and Masha Bayles. Tel: 822865

PEMBURY FOOTBALL CLUB

Saturday Secretary: Bill Baker. Tel: 825822

Sunday Secretary: Phil Craxton. 823928

Chairman: Andy Rice-Tucker. Tel: 822483

PEMBURY FOOTPATH WALKERS

N. & K. Franklin, 11 The Meadow. Tel: 823212

PEMBURY GARDENERS' SOCIETY

Ann Purton. Tel: 824223

PEMBURY PAVILION BOOKINGS

Gillian Mayrick. Tel: 824852

PEMBURY PLAYERS

James Whitehorn. Tel: 824854

PEMBURY SCHOOL

School Office. Tel: 822259

PEMBURY SCHOOL ASSOCIATION

Chair: Theresa Mason. email: psa@pembury.kent.sch.uk

PEMBURY SCHOOL HOUSE NURSERY

Teacher in charge: Rachel Teigen. Tel: 825580

PEMBURY SHORT MAT BOWLING CLUB

Arthur Storey. Tel: 822509

PEMBURY SOCIETY

Chairman: David Hanes. Tel: 823174

PEMBURY TENNIS CLUB

Mrs S. Smith, 2 Ridgeway. Tel: 822405

PEMBURY U3A

Membership Secretary: Andrew Richardson. Tel: 824012

PEMBURY UPPER AND OLD CHURCH

Rev'd. Douglas Robertson. Tel: 824761

PEMBURY VILLAGE MARKET

Karol Young. Tel: 823413

PEPENBURY

Principal: Mr Roger Gibson, Cornford Lane. Tel: 822168

POLICE COMMUNITY SUPPORT OFFICER

PCSO Nick Brown. Tel: 07772 226001

ROTARY CLUB OF SOUTHBOROUGH & PEMBURY

Secretary: Nigel Stratton. Tel: 822936

ROYAL NATIONAL LIFEBOAT INSTITUTION

Peter Chartres, 54 Woodhill Park. Tel: 823759

SCOUTS, CUBS AND BEAVERS

Michelle Usherwood. Tel: 822020

SCOUT & GUIDE HQ MANAGEMENT TEAM

Michelle Usherwood. Tel: 822020

ST. ANSELM HALL ENQUIRIES

Janet Ditchett. Tel: 822586.

ST. PETER'S MOTHERS' UNION

Secretary: Tina Walters. Tel: 822545 (after 4pm)

TABLE TENNIS CLUB

John Burleton. Tel: 823250

THE ORDINARIATE OF OUR LADY OF WALSLINGHAM

Fr. Ed Tomlinson, 31 Henwoods Crescent. Tel: 825009

TOWN & COUNTRY (HIGH WEALD HOUSING)

Housing manager: Antony Allder.
Tel: 0845 8731 321

TREE WARDEN

Caroline Mazzei. Tel: 822493

TUNBRIDGE WELLS ACCESS GROUP

Gill Pavey. Tel: 822605

TUNBRIDGE WELLS & DISTRICT VICTIM SUPPORT SCHEME.

Tel: 513969

VILLAGE HALL

Manager (bookings): Karen Tamblin. Tel: 07983 228181

WHEELCHAIR LOAN (24 hour maximum, for Pembury Residents)

Pauline Hawker. Tel: 824327

WOMEN'S INSTITUTES

Evening: Jane Jones. Tel: 823601

01892 825505



HENRY PAUL FUNERALS

Contemporary and Traditional Services

HENRY PAUL FUNERALS is a traditional family owned funeral directors purposely dedicated to providing distinct levels of service, choice, dignity and care to bereaved families in Pembury, Tunbridge Wells, Tonbridge and surrounding areas.

24 Hour Emergency Service • Home Visits • Private Chapel of Rest
Full Fleet of Modern & Vintage Vehicles • Floral Tributes • Catering
Memorial Masonry • Pre-paid Funeral Plans • Repatriation



Golden Charter
Funeral Plans

Perfect Choice
Funeral Plans

HEAD OFFICE

10 High Street, Pembury,
Tunbridge Wells, Kent TN2 4NY

01892 825505

pembury@henrypaulfunerals.co.uk

FUNERAL DIRECTORS

49-51 London Road, Southborough,
Tunbridge Wells, Kent TN4 0PB

01892 458338

southborough@henrypaulfunerals.co.uk

FUNERAL DIRECTORS & MEMORIAL SHOWROOM

88a Shipbourne Road,
Tonbridge, Kent TN10 3EG

01732 605002

tonbridge@henrypaulfunerals.co.uk

www.henrypaulfunerals.co.uk