



# PEMBURY

**your village newsletter**

**march 1980 issue no.**

# 23

## ANNUAL VILLAGE QUIZ

Pembury Chest have organised another quiz for local village organisations – come and enjoy yourself at the Village Hall on **SATURDAY, MARCH 29TH** starting at 8.00 pm.



### NEXT QUESTION

What has 13 parts all going in different directions?

## contents

Editorial .....	2/3
W.I. Market .....	3
Pembury Chest .....	4
Poem/Tennis .....	5
Amenities Committee .....	7-10

Conservation Area .....	11-14
Clerks Report .....	15
Letters to the Editor .....	16-18
Miscellaneous .....	22
Diary .....	23

# VIEWPOINT

## the life of a parish councillor

Twelve months ago the Newsletter made a plea for parishioners to offer themselves for election to the Parish Council on the 3rd May.

A certain gentleman by the name of Jim Callaghan decided in fact that the elections would be the 24th May but nevertheless after the passage of nearly twelve months it may perhaps be of interest to readers to look at some aspects of exactly what the thirteen successful councillors at that election have been doing since.

Although Parish Council meetings are held in the evenings it is true to say that there are not many parishioners who attend and therefore the detailed discussions once a fortnight in Council largely go unnoticed. Perhaps they deserve to be.

There is, however, a great variety of subject matter considered by the Parish Council.

It is true to say that Parish Councils have very little power but at the same time the responsibilities of the individual councillor can be as far reaching

as he or she would wish to make them. Traditionally anything within the boundaries of a Parish is a matter in which a Parish Councillor should interest himself, and the Council itself is entitled to have a view on it.

The unsuccessful candidates at last May's election have missed out on such wide ranging subjects as Our Lack of a Junior School, the State of the Pavements, Roads, Hedges, and Lights in the Village, the continuing delay on our two By-Passes, the effect on Pembury's rates of the absence of cottage industry and the proposed move of the radio therapy unit from the Hospital.

Perhaps not exciting in cold print but these and many other matters do directly concern the parishioners and that quite definitely makes them of great importance to the Parish Council.

This Newsletter has tried to make up for the absence of direct contact with you at Council meetings by acting as a link to keep you informed of activities within the Village.

# W.I. MARKET

To help this communication and understanding even more it is planned to have a special feature article in the Newsletter over the next twelve months on the work of each of the Council's four main committees. This issue sees a detailed description of the work of the **Amenities Committee**, probably the core of the work of any Parish Council, and it will be followed in three months by a similar broad review of the work of the **Finance Committee**. Subsequent issues will cover the work of the **Highways Committee** and the **Planning Committee**.

In twelve months time therefore, readers will hopefully have had a complete review of everything currently under discussion by the Parish Council and the four articles, when read together will give prospective Parish Councillors an idea of what an interesting job it can be.



The Pembury W.I. Market provides a very good service for many people in the Village.

It was started 28 years ago by Mrs. Nora Miles who was controller for many years, her daughter-in-law Mrs Frances Miles being the present controller.

The Market is held in the Village Hall every Friday morning 10.15 to 11.15 and it is necessary to be in good time as goods sell very quickly. A group of cheerful voluntary helpers sell cakes, preserves, plants, fruit, vegetables, eggs, poultry, flowers and handicrafts.

It is a social gathering for many who, after making their purchases gather at the coffee tables with friends for a chat and coffee or tea which is served.

New producers are most welcome — non W.I. members included.



# News from PEMBURY Chest

Pembury Chest is now concentrating on the remainder of this year's programme, leading up to the Village Fete on July 12th.

Most organisations in Pembury have been asked if they wish to take part but if by any chance your association has been overlooked, and you wish to man a stall or sideshow, please contact the honorary secretary.

By the time this appears in print the Quiz Evening — in which four local societies battle for victory in a Brain of Pembury contest — will be upon us.

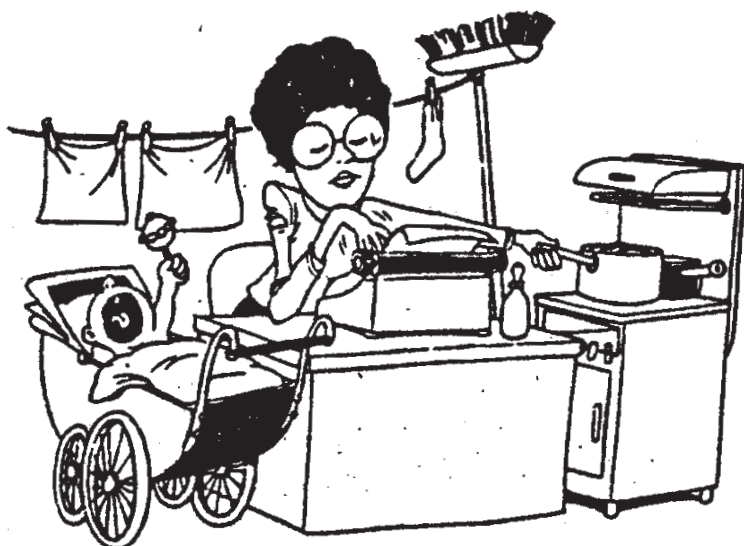
This will be followed by the selection of Miss Pembury 1980 on the Village Green on May 3rd. Once again Mr. Richard Nisbet, Headmaster of Pembury Primary School, has agreed that a team of country dancers from the school will take part in the event.

Last year their colourful display captivated all who saw it. An innovation this year will be the sale of hot or cold drinks to spectators. Early May can be uncertain but whether you need a long drink to slake your thirst or something hot to stop you shivering we hope to be able to meet your needs.

The competition for Miss Pembury is open to young ladies, married or single, between 16 and 25, living in the village. This includes nurses at the hospital. There is no entrance fee. Applicants should get in touch with the Chest's honorary secretary, Mr. Robert Allen at 37 Highfield Close, Pembury, for an entry form. It is hoped to have supplies of these forms also at some local shops.

The event begins at 10.30 a.m. and lasts little more than an hour. Everyone is welcome. It makes a pleasant change from the usual Saturday morning shopping round.

This year the Chest announced it had £150 for distribution among local organisations or individuals who could do with some financial aid to enable them to achieve a cherished aim. There were five applications for such help and the adjudicating panel met during February to allocate the money. Their decision will be published in the next Newsletter.



Mrs. Liz Caple, who organised the highly successful Christmas Mini-Market on December 1st, has resigned as Chairman of the Chest for personal reasons, but she will continue to help with activities. We shall miss her dedication and organising ability.

In her place we welcome a new chairman, Mr. Arthur Bromwich, who was elected a parish councillor last May and who is involved with a number of activities in the village.

## REFLECTIONS

*Not long ago, the bells  
Had rung, their advent  
Songs had filled the air,  
And all the usual carols  
Sung, throughout  
The Western hemisphere . . .  
But now the Xmas-Cards  
Are gone, and all dispersed  
Those happy-things,  
Like holly, mistletoe,  
Lantern-lights, candlesticks,  
And silver rings.  
For is it too soon  
To mention here,  
That mere mortal man  
In his abode,  
Surrounds himself in gimmickry,  
As a substitute for truth  
And humanity.*

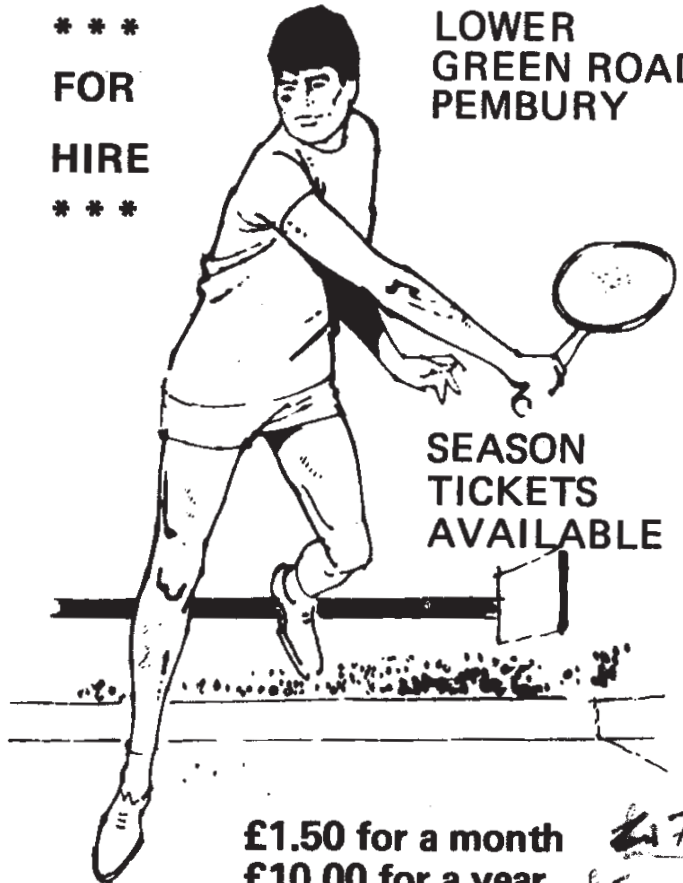
*Terence St John*

17 Belfield Road,  
Pembury,  
Kent.  
TN2 4HN

## HARD TENNIS COURT PEMBURY RECREATION GROUND

\*\*\*  
FOR  
HIRE  
\*\*\*

LOWER  
GREEN ROAD,  
PEMBURY



SEASON  
TICKETS  
AVAILABLE

£1.50 for a month ~~£7.50~~  
£10.00 for a year ~~£50.00~~

For you or your family's use.

Tickets available from:  
H. S. J. Plant, Esq.,  
16 The Coppice, Pembury, Kent.

Between 9 a.m. — 1 p.m. Monday —  
Friday or most weekday evenings  
6 — 9 p.m.

---

---

All your flooring problems covered  
Your own flooring laid

---

---

Sheet Vynils · Vynil Tiles  
Carpets (*Domestic or Contract*)  
Wood Mosaic · Wood Blocks  
Wood Strip

Your old wood floors  
resanded and sealed

*The* RING  
**PROFESSIONALS**  
at Pembury 3746  
or Tunbridge Wells 39619

## W.F.FOORD

**Carpet Planner, Fitter  
and Supplies**

**Carpets Waterbased Stain  
Proofed and Cleaned**

3 Henwoods Crescent  
Tel: Pembury 2611

## S. & B. AUTOS

Camden Service Station, Pembury

Tel: Pembury 2761

(24 hours Recovery Service)

**Repairs and Servicing**

**All Cars British & Continental**

**Mechanical and Bodywork Undertaken**

**Courteous and Personal Service**

Spares for the D.I.Y's

Plugs  
Points  
Starters  
Alternators etc.

Nuts Oil Filters  
Bolts Air Filters  
Screws Brake Shoes  
etc. Brake Fluid etc.



# AMENITIES COMMITTEE

*Councillor B. D. Sands (Chairman)*

---

On 22nd April 1974 the Pembury Parish Council changed the name of the Recreation Ground Committee to the Amenities Committee – the Committee which would have the responsibility of ensuring that the existing amenities in the village were retained and improved and also would ensure the introduction of forward planning. Since that time council members have spent hours working on the most advantageous projects for the village within a limited budget and the results to date indicate their dedication to the task and, alas, the limited funds available to them.

The greatest disappointment of course was the failure to provide a Community Centre for the residents of Pembury, despite an immense campaign by the Community Centre Association to get the project off the ground. It is today that the lack of such a building is fully realised for in excess of forty village organisations are endeavouring to use the two halls in the village and being unsuccessful in many instances due to the halls being fully booked.

Fortunately the failures are heavily outweighed by the successes and one needs only to walk around the Village to notice them. The Green, two recreation grounds, burial ground and the two church grounds are extremely well maintained and a credit to our groundsmen. There is no doubt that their expertise and quality of work is enjoyed by most residents.

A very worthwhile project was that of renewing the childrens' play equipment in the Lower Green Recreation Ground. Despite certain difficulties the children now enjoy a comprehensive range of equipment including a fenced off infants' area and it is hoped to further this project from time to time.

The tennis courts have received a great deal of attention recently. The hard court was resurfaced in 1979 and is now in use for winter players and later on netball. The grass courts have had the ends returfed and will be ready for the summer season.

Pembury is very fortunate to have a very good, well maintained bowls green and now has a thriving club.

A recent problem the Amenities Committee had was that of the entrance to the recreation ground off Lower Green Road. Great problems were experienced with water entering neighbouring properties and some extensive work was required. The result is that apart from solving the water problem the village now has a much improved entrance drive and a pavement alongside for pedestrians. Gates have been fitted to assist in securing the recreation ground at night.

Woodside playing field was purchased some years ago as an additional recreational area, in particular for such sports as football. Pembury has three football clubs entered in the local leagues using this ground and the new pavilion has been built to accommodate them and any other sport played there in the future.

The pavilion has ample toilets, showers and a kitchen, all of which it is hoped will be used regularly. This recreation ground is underused, particularly in the summer months, and your Council will be pleased to hear of organisations who wish to use it.

The Village Hall has reached the stage of requiring major alteration and decoration. Discussions have taken place between representatives of the Village Hall Management Committee and the Amenities Committee which have resulted in plans for the modernisation of the front entrance and the bar area, incorporating a new kitchen at that end of the building. The toilets also will be modernised. The architect is soon to complete detailed plans which will be submitted to contractors for estimates. Planning permission has already been granted. Due to lack of money the redecoration of the Hall cannot immediately take place. However, once the modernisation of the north end of the Hall has been completed the Amenities Committee will look into a self help scheme where perhaps Councillors and Villagers will tackle the problem together. The intention is to complete the Hall in 1980.

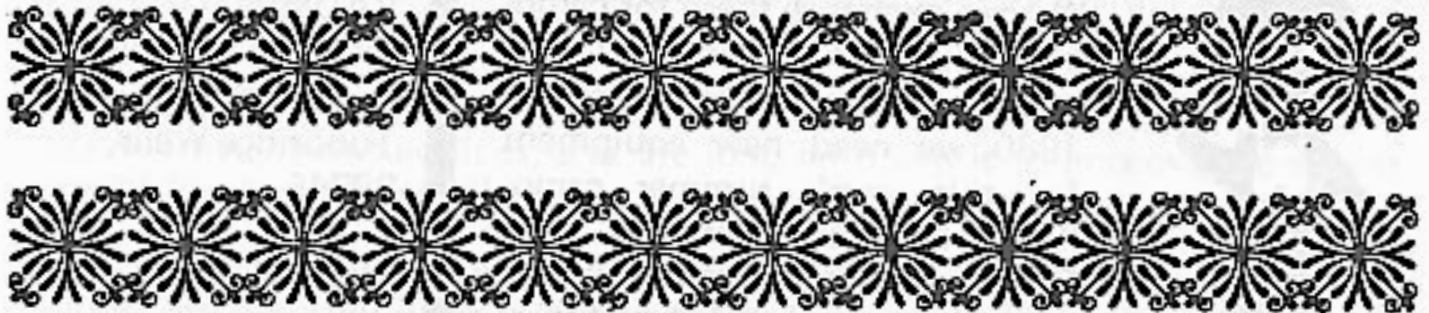
There are many items that could be mentioned that improve life in the Village. The footpaths, extremely well marked, are the responsibility of another committee, but are an amenity to the village. The allotments, again another committee, are used by many parishioners who spend many happy hours working the soil. The many clubs and organisations that operate in the Village all assist us in our leisure time and make Pembury a worthwhile village in which to live.



The **Youth Club** is a thriving organisation in the Village and has a terrible problem in that it needs premises of its own so that it can meet on more than one night a week. It would be foolish to pretend that in the near future such a building could be provided by the Pembury Parish Council. However, discussions are taking place with youth club leaders and Kent County Council youth officials in an attempt to sow some seeds for the future and enable the Youth Club to operate in an adequate manner.

The Amenities Committee has held discussion with the Tunbridge Wells Borough Council over the last two years with regard to new toilets in the village. At the present time the siting of the toilets is not known but the Borough Council has given the date as 1983/4 for completion.

The elderly people of the village meet once every two weeks and require premises that will allow them to meet more frequently. At the present time the Committee has been unsuccessful in finding the solution to this problem but has the subject in its thoughts.



*Photo:* DHR Photographic, Pembury



Looking to the future it is true to say that due to finance the amenity programme will be limited. In the financial year 1980/81 no new projects have been included in estimates. However, the Amenities Committee will not be idle. It has to conclude its arrangements for securing the Lower Green Recreation Ground at night. It has for some years been pressing for a clinic and as soon as plans are approved for the Royal Oak site in Henwood Green Road the Village should see the fruition of its work in that direction.

It is evident from this report that there are many things in Pembury that need to be done. Also that the main problem is the wherewithal to do it. Your Council will strive to provide amenities not only essential to village life but those that enhance life. It requires and looks forward to the co-operation of all who live in Pembury.

?

### GOLLIES WANTED

Pembury Cubs & Scouts urgently need your Robertson's Gollies. We can exchange these for camping equipment. Although the offer is open until 31st December 1980 we need new equipment for this year's summer camp. Please help by saving all your Gollies and putting them in the collection boxes at selected local shops.

CAMDEN GREEN  
BADMINTON CLUB  
Mrs. A. Davenport  
— 10 Rymers Close,  
Tunbridge Wells,  
38745.



Photo: DHR Photographic, Pembury

# CONSERVATION

**1** PROGRESS  
 \* \* \* \*  
**1st** report

MUST BE

CONTINUOUS

It is now nearly three years since the formal approval by the Borough Council of Pembury Conservation Area.

The area of our village involved is shown on the accompanying drawing enclosed by the dotted lines, and the long term aim is to improve the appearance of this part of our village.

General cleaning up, tidying up, and repainting of properties in sympathetic colours are basically what is involved. This is coupled with the improvement of the buildings themselves such as has recently taken place to the Camden.

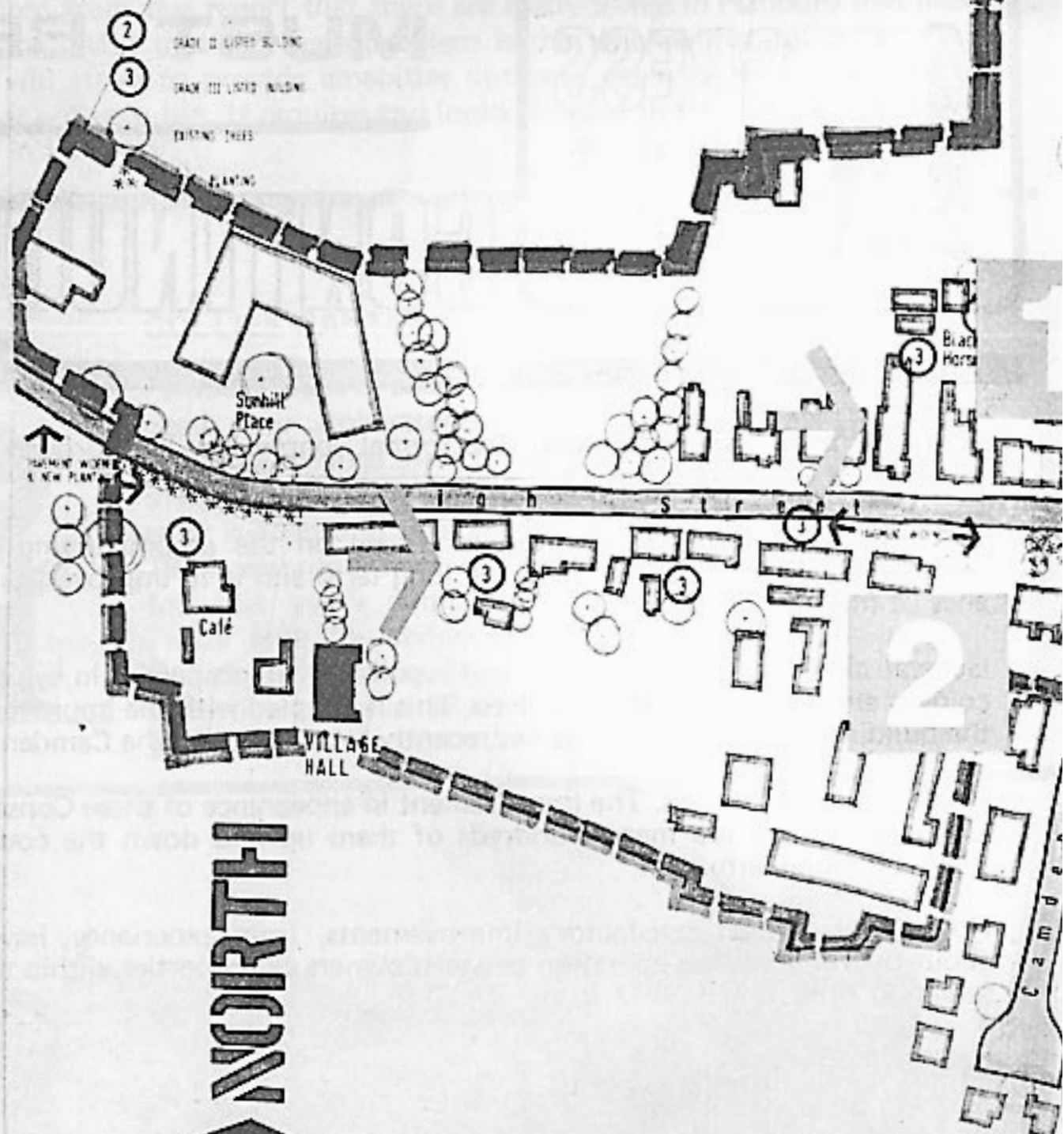
It is not a quick process. The improvement in appearance of these Conservation Areas, and there are many hundreds of them up and down the country, is essentially long term.

However, the most satisfactory improvements, from experience, have come about by voluntary co-operation between owners of properties within the Conservation Area itself.



# PEMBURY

## APPROVED CONSERVATION

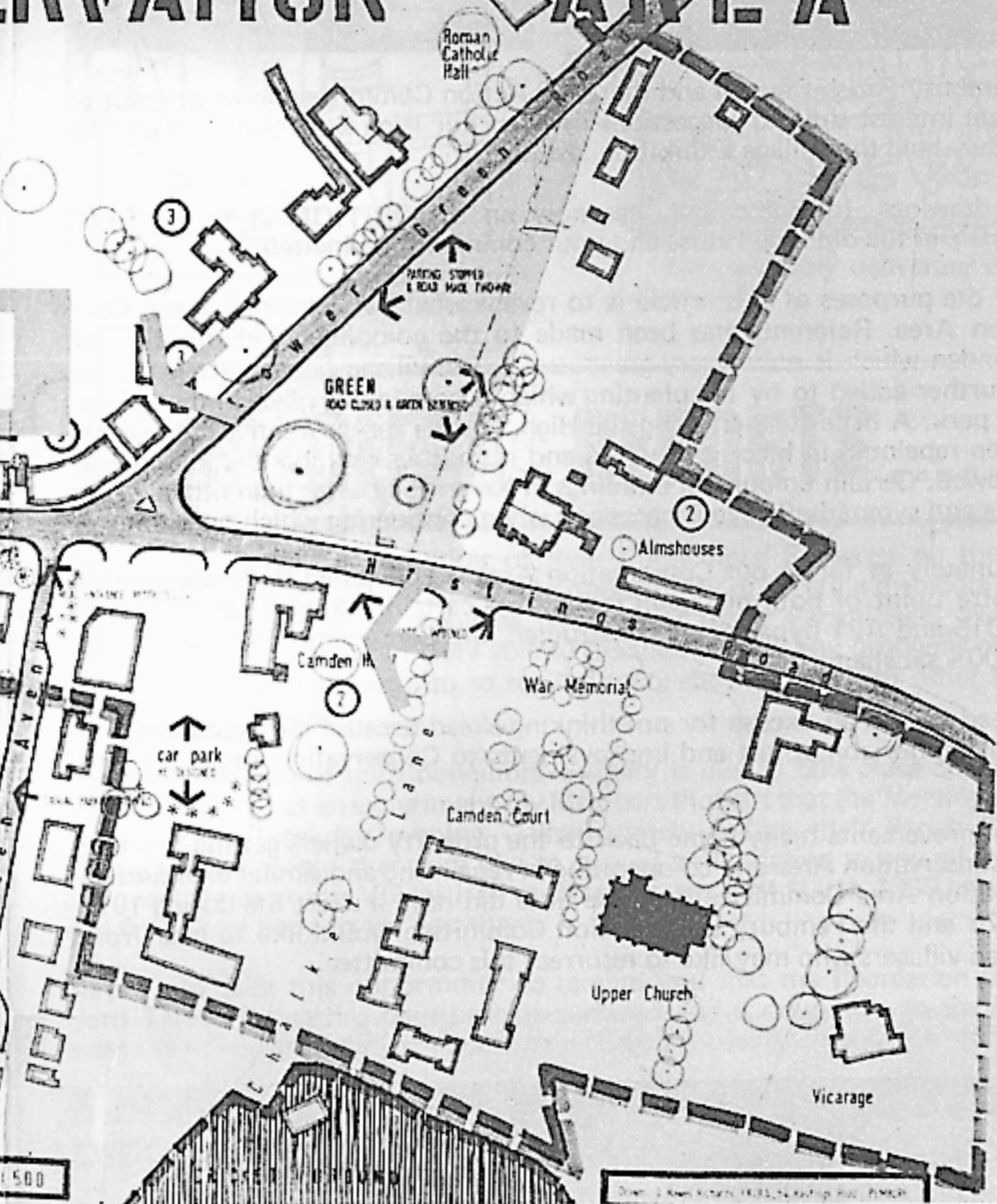


**NORTH**

PEMBURY PARISH COUNCIL - 1976

SCALE 1:1000

# 2000 CONSERVATION AREA





The Pembury Parish Council and the 2000 Action Committee, in an attempt to stimulate interest showed suggestions of what our High Street could look like when they held the Village Exhibition last May.

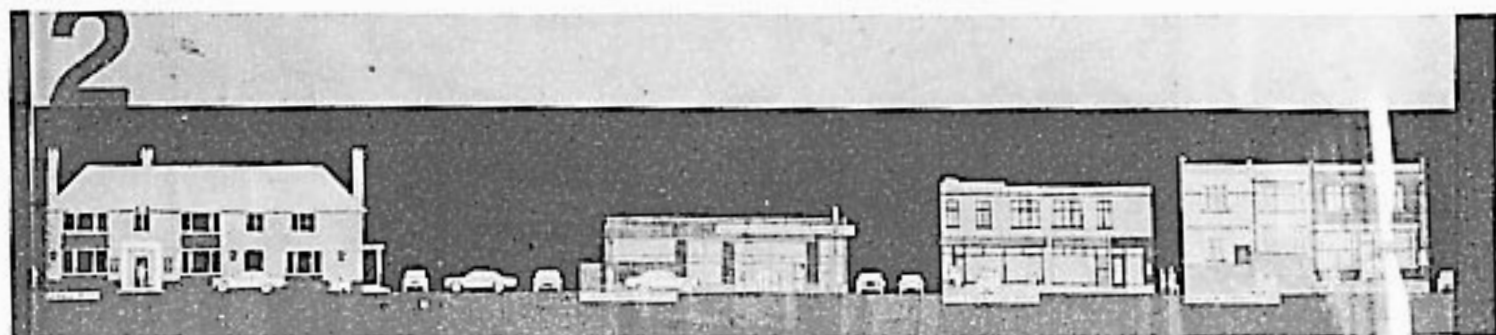
These drawings, in full colour, are now on EXHIBITION at the PUBLIC LIBRARY in the old Hop House and your comments are invited.

One of the purposes of this article is to review what has happened in our Conservation Area. Reference has been made to the complete modernisation of the Camden which is now a very great asset to our village. This improvement is being further added to by the planting which is now taking place in the adjoining car park. A little further along the High Street a very attractive cottage has just been repainted in black and white and is another example that could well be followed. Certain colours on buildings in Kent look better than others and a sensitive and sympathetic eye is necessary when considering which ones to use.

Unfortunately as far as our Conservation Area is concerned in Pembury, it is the centre point of both our main roads. It is certainly true to say that until the B2015 and A21 bypasses are constructed, the Conservation Area will never work 100% satisfactorily.

That need not be an excuse for not thinking ahead because the bypasses are at least on the horizon at last and improvements to Conservation Areas are long term.

These improvements really come back to the property owners getting together in the Conservation Area and co-operating in repainting and similar exercises. A Conservation Area Committee on these lines did have a short life during 1977 and 1978 and the Pembury 2000 Action Committee would like to hear from interested villagers who may like to resurrect this committee.





"But they're all speaking in whispers and I can't hear a thing!"

Courtesy "Local Council Review"



"He's probably delivering second-class mail."

## YOUR CLERK REPORTS .....

The Parish Council held another of their Councillors' Surgeries on the 19th January 1980 when Villagers took the opportunity of meeting members of my Council to discuss their problems. Whilst not many Parishioners took the opportunity those that did were able to discuss not only any problems or complaints that they had but also to see a display showing amongst other things, the latest By-Pass Plans.

The Next Meeting of my Councillors' Surgery is due to take place on the 31st March 1980 and as an experiment my Members thought that the Meeting should be held on a weekday evening — immediately before their Parish Council Meeting. They would therefore like to extend an invitation to you all to come and meet them at the Village Hall on Monday, the 31st March 1980 between 7 and 8 p.m. — I hope to see you there.

May I also take this opportunity to remind you that the Recreation Ground Hard Tennis Court has now been re-surfaced and is now open to the Public, please see details below (on Page 5) regarding the cost of season tickets for you and your family.



# Letters to the Editor

Dear Sir,

**re: December Newsletter: Employment Opportunities**

---

I think the Pembury 2000 Committee should desist from interfering with the natural development of Pembury.

a) If Pembury is a dormitory town, it is surely because the people who live here have, in the main, chosen a residential environment. I most certainly do not wish to live in a 'busy place'. I want to come home, away from work and away from hustle and bustle and I'm quite sure a lot of other people do too.

b) The creation of a planned estate of small commercial premises is an artificial creation of jobs, and therefore a bit of a gamble — will the companies that come here simply because the premises are there (as opposed to a need for the business) prosper, and will local people want to work in Pembury for presumably comparably lower rates of pay, promotion opportunities and job interest? Incidentally — as one reared in the country I object most strongly to being called 'a villager'. To me it is a very patronising phrase. 'Residents' please.

c) Where would this estate be built? We have precious little countryside left in Pembury as it is. Let's retain what we've got.

d) On one hand you want to 'liven Pembury up' and on the other you are campaigning for a by-pass to take traffic away from Pembury and make it more of a village. If you have a commercial development you are bringing

traffic in. The two schemes seem opposed. Also — if the by-pass ever gets built, how will this affect your commercial development? Probably adversely.

You give four reasons for wanting this estate —

**Lowering rates** — I'm by no means well off but at the moment I don't consider them excessive, and I would rather pay a few pounds extra than put up with all that a commercial development would bring.

**Community Spirit** — This might be more effectively improved if we had a proper village centre, including a decent village hall with good facilities and a good programme of events. Lots of people go out of the village for their entertainment, not from choice but necessity.

**Communities** develop naturally in answer to a need. There is obviously a need for a dormitory town around here. A commercial estate created simply because someone thinks we ought to have one is far more artificial and damaging than an 'unbalanced community'.

**Prosperity** — 'new business activity would create a better climate for existing commerce with one activity leading to another' — Too right! Before we knew it, if it prospered, our small estate would be expanding and expanding. Then, no doubt, there would be another campaign to stop any more commercial development!

No, Pembury 2000. Leave things as they are and stop poking your noses in where they are not wanted. If you





are so keen for something to do, why not try to teach the council how to organise the roads better?

Why, for example, do all the estates built off Lower Green Road have that as their only means of access? Thus an unnecessarily heavy amount of traffic is spilled out into this road – on top of all the traffic from East Peckham direction wanting to get to Tunbridge Wells.

Why couldn't some of these estates have alternative outlets into the A21 – at the traffic lights at Woodsgate Corner for example.

And whose brilliant mind decided to have pedestrian controls only yards from the traffic lights at the top of Lower Green Road? Sitting there in a jam I have had time to work out that much of the congestion by the green is caused because the pedestrian lights are preventing A21 traffic from moving on. These cars then block the top of Lower Green Road so that when these lights change to green the traffic cannot move out – and so it goes on.

That's just a digression. I think the best way to improve Pembury's community spirit would be to improve the village hall. It could be very pleasant with a little bit of work and I am sure that would lead to more events being held there and better support for these events. A further improvement would be to provide parking for the village hall – what about knocking down the old cafe and using that area there?

**June Kidgell**  
Flat 2, Knights Place,  
53 Lower Green Rd, Pembury.

Dear Sir,

With reference to the Village Newsletter No. 22, Pembury 2000, pages 12/13, I can only voice a personal opinion referring to the question of an industrial site in the village of the future, but I feel that this would be a disaster of the first magnitude.

I came to live in this village 17 years ago, because my wife and I like village life as against towns, and while we have seen the village grow drastically in this period, changing the character of Pembury, we feel that to add further to the urbanisation of the village would be a retrograde step. The question of rates is of course an unpleasant subject – but I am sure that there would be no alleviation of our personal requirements by having an industrial site. It would be appalling to become a second Paddock Wood.

The fault of our village expansion, lies with the developers who have no consideration for the people here, and to have more and more flats built will only add to the more elderly element as time goes on, and no industrial site will benefit them.

Most modern homeowners here are fluid occupants in that they work elsewhere, London, etc., and no industrial site will alter that factor, and as stated in the pages mentioned, who can be sure that vacancies would be filled by Pembury residents (villagers).

At the moment shopping facilities are adequate. The addition of large shops, drapers, butchers, grocers, etc., will only duplicate an already satisfactory service.

I am strongly against any further development, and I trust you will receive many letters of a like nature.  
Yours faithfully,

**K. A. Salter**  
28 Greenleas.

Dear Sir,

### Light Industry in Pembury

With reference to your request for residents' views on the above, I feel I must protest most strongly against any industrial development in Pembury.

We have only lived in Pembury for 18 months. The main reason we chose to live here was because of its rural atmosphere and lack of industry. Having an industrial estate would surely be against all the village is striving for, namely less traffic especially lorries. Why else is there such an effort being made to get the two by-passes?

More industry would mean more houses, more houses would mean more children and as I understand it the school is too overcrowded already.

Let me take this opportunity of saying how nice it is to receive the Newsletter giving us all the information of the Parish Council and local clubs.

Yours faithfully,

Mrs D. M. Sparks  
40 Woodhill Park.

Dear Sir,

Thank you for asking the views of the residents you represent on this, a major issue of future Parish development. I know that I speak for my family and many of my neighbours when I say that we would be very concerned, not to say upset, at the material changes being discussed at this time being given anything more than short shrift. To summarise our views in the format presented in the Parish Council's last magazine they are as follows:

**1. Rates** — As pointed out in your article, only a substantial trading estate would have any effect in reducing the presently high, but accepted rate burden. However, as these rates

were high, relative to other areas, when most residents moved into the Parish this in itself must be an indication of the area's preparedness to tolerate these figures for the benefits of the type of surroundings in which we wish to raise our families.

**2. Community Spirit** — Many of the area's residents do not work any great distance away and despite the efforts of many organisations to create activities in which the Parish may involve itself there seems a distinct lack of enthusiasm which we feel would be unlikely to be overcome by working on one's own doorstep.

**3. Community Balance** — Surely the beauty of living in a village such as Pembury is that the slower pace of life, the absence of heavy traffic (upon the completion of the by-pass) and the "small corner shops" is a balanced way of life in itself as contrasted with the urban helter skelter of towns in which most of us have to work.

**4. Prosperity** — The added prosperity of which you inform us will undoubtedly bring with it an increase in:

- a) the existing problems of vandalism
- b) the already heavy traffic (if this is possible) and
- c) a marked reduction in the natural beauty and wildlife of one of Kent's most attractive areas.

The increase in size of Pembury to accommodate a large trading estate would result in more cramped schools, and, because of cuts in local government spending, general reduction in service and community welfare.

The whole package we regret is a non-starter and too expensive both socially and environmentally. Therefore, please tell County Hall — "think again — but *not* of Pembury".

Yours faithfully,

Mr J. Franks  
44 Ridgeway.

# **PEMBURY SCHOOL OF BALLROOM LATIN AND DISCO DANCING**

★ Tuesdays ★      **Private Lessons  
& Classes Weekly  
(All beginners Welcome)**

★ Fridays ★      **Childrens Class 6pm – 7pm  
Private Lessons**

Social Dance held every Last Friday  
in each month

All Beginners Welcome

Tel: R. Cavie – Tunbridge Wells 37713.

---

For all aspects of Estate Agency  
consult your Local Agent

## **PRALL, CHAMPION & PRALL**

Chartered Surveyors & Estate Agents

**8a High Street, Pembury**

**Tel: 2310 & 2705**

*also at*

**161 High Street, Tonbridge Tel: 352533**

**93 Commercial Road, Paddock Wood**

**Tel: 3388**

*and*

**15 Bank Street, Sevenoaks Tel: 50058/9**

# **PEMBURY CAR SALES LTD.**

## **JAGUAR – DAIMLER SPECIALISTS**

### **NEW CARS**

we are your agents for

### **FORD**

most other makes obtainable

### **USED CARS**

Always a large selection of guaranteed used cars

### **SERVICE AND REPAIRS**

Any make serviced or repaired by our factory trained mechanics. Electronic tuning – wheel balancing – major overhauls and repairs – bodywork repairs and resprays carried out

34/36 HASTINGS ROAD, PEMBURY. TEL: 2294/5

Open every day 8am – 6pm. Except Sunday

---

# **J. H. WILKINSON M.P.S.**

## **CHEMIST**

Medicines  
Baby Products  
Kodak Films  
Developing & Printing

Cosmetics  
Fancy Goods  
Gift Sets  
Toiletries

**5 HIGH STREET  
PEMBURY**

## DOUBLE GLAZED



## PATIO DOORS

The home improvement everyone can see



The national company  
with the local service

## EXTERNAL DOORS

The luxury that adds value to your home



# anglian

WINDOW CENTRES

42, GROSVENOR ROAD,  
TUNBRIDGE WELLS.

Tel: 42277

(Evenings—Pembury 2325)



Home Improvements — Extensions — Free Estimates

# ALAN CLARKE

Builder

18 Greenleas Pembury Tel. 3932

# PEMBURY

is published four times a year by the Pembury Parish Council.

The Editor would welcome any contributions for inclusion in the Newsletter.

Design and layout by DHR Photographic Ltd, and printed by Orchard Printing Services, Paddock Wood.

All photographs, unless noted, are by Peter Bromwich.

The views expressed in the Newsletter do not necessarily represent official Parish Council opinion or policy.

## EDITOR :

Derek Hawes Richards  
54 Hastings Road



Pembury 2779



## editorial secretary :

Mrs. Mavis Board  
c/o 4 St. Johns Rd.,  
Tunbridge Wells



T/Wells 38777



## Clerk to the Council

Henry S. J. Plant  
16 The Coppice



Pembury 3459



# 'PEMBURY'



This film of our village, made by PEMBURY 2000 ACTION COMMITTEE, can be hired free of charge. Please contact the Clerk to the Council.

## PARADISE or PURGATORY ?

# FOR YOUR DIARY

- APR. 3 Afternoon W.I. Business Meeting and Beetle Drive – V. Hall, 2.30 p.m.  
 8 Darby & Joan Club – RC Hall, 2-5 p.m.  
 8 Womens Fellowship – “Swiss National Park” – RC Hall, 8 p.m.  
 8 Ladies Social Group – Visit to Kent & Sussex Courier  
 10 Afternoon W.I. – Diamond Jubilee Dinner – V. Hall, 7.30 p.m.  
 11 Even. W.I. – “Value for Money” by Mrs. Marshall of  
 Sainsbury’s V. Hall, 7.45 p.m.  
 12 Pembury Society – Footpaths Walk – Stone Ct. Bus Terminal, 2.15 p.m.  
 14 Hort. Soc. Floral Art Group – V. Hall, 8 p.m.  
 14 Parish Council – Amenities, Planning Finance – Library.  
 21 Pembury Society – Illustrated Talk on Wealden Iron – V. Hall, 8 p.m.  
 22 Ladies Social Group – Miss V. Brew “Grandmother’s Remedies”  
 Venue to be arranged.  
 22 Darby & Joan Club – RC Hall, 2 - 5 p.m.  
 24 Hort Soc. – Illustrated Talk – G. S. Joy “The Care of Houseplants”  
 – V. Hall, 8 p.m.  
 28 Parish Council – Highways, Planning, 2000 Liaison – V. Hall.
- MAY 2 Evening W.I. Resolutions for the N.F.W.I. and AGM – V. Hall, 7.45 p.m.  
 3 Friends of Pembury Parish Church – Barn Dance – RC Hall, 7.45 - 11.45 p.m.  
 6 Darby & Joan Club – RC Hall, 2 - 5 p.m.  
 8 Afternoon W.I. Mrs. Muxlow VCO – Resolutions plus Flower Arrangement  
 in an Egg Cup Competition – V. Hall, 2.30 p.m.  
 10 Pembury Society – Footpaths Walk – Camden Hotel, 2.15 p.m.  
 12 Hort. Soc. – Floral Art Group – V. Hall, 8 p.m.  
 12 Parish Council Meeting – Library  
 13 Ladies Social Group – Bingo with prizes – Venue to be arranged.  
 13 Womens Fellowship – Film about Pembury by D. Hawes Richards  
 plus Bring & Buy Sales – RC Hall, 8 p.m.  
 20 Darby & Joan Club – RC Hall, 2 - 5 p.m.  
 27 Ladies Social Group – Morocco around the Southern Atlas by Land Rover  
 by Mrs. Horsfall – venue to be arranged.  
 29 Hort. Soc. – Illustrated talk by Mr. Stuart Ogg “The Growing of Delphiniums  
 and their use in the house” – V. Hall, 8 p.m.
- JUNE 2 Parish Council – Amenities, Planning, Finance – V. Hall  
 3 Darby & Joan Club – RC Hall, 2 - 5 p.m.  
 5 Afternoon W.I. Mrs. V. Anderson – Victoriana & The Victorian Lady  
 – V. Hall, 2.30 p.m.  
 6 Evening W.I. – “Early English Porcelain” by Mr. W. Buck – V. Hall, 7.45 p.m.  
 9 Hort. Soc. – Floral Art Group – RC Hall, 8 p.m.  
 10 Ladies Social Group – Ramble Treasure Hunt.  
 16 Parish Council – Highways, Planning, 2000 Liaison – V. Hall  
 17 Darby & Joan Club – RC Hall, 2 - 5 p.m.  
 21 Pembury School PTA – School Fete – School Grounds  
 24 Ladies Social Group – The Romantic Past with Old Lace by Mrs. Purvis  
 – venue to be arranged  
 30 Full Parish Council Meeting – V. Hall

# STURGEON'S OF PEMBURY

Specialists in all types  
of Road and Drive  
Construction

Coal Merchants  
Haulage Contractors

Henwood Green, Pembury. Tel: Pembury 2221/2/3