

Pembury Parish Council's

# Annual Parish Meeting



**Including a presentation on Neighbourhood Development Plans from Cllr Christopher Woodley from Brenchley & Matfield Parish Council**

**Pembury Village Hall,  
High Street, Pembury**

**Thursday 30 April 2020  
at 8pm**

**Please check our website and notice boards  
for more details nearer the time**

**[www.pemburyparishcouncil.gov.uk](http://www.pemburyparishcouncil.gov.uk)**

Pembury Parish Council has had another busy year maintaining its facilities, delivering its services and organising several events for the village! We have also worked with residents and local organisations against inappropriate development in Pembury, including the Hendy Motor village on the Tesco site and the Draft Local Plan which proposes over 300 new homes on Metropolitan Green Belt.

Here is a snapshot of our work this year:

## **FULL COUNCIL**

- 12 councillors were elected in May. We said 'goodbye' to some colleagues and 'hello' to some new ones!

## **COMMUNICATION & EVENTS COMMITTEE**

- The Pembury Village News – delivered to every house in the village
- Well-loved regular events and competitions, such as the Picnic on the Green, Remembrance Sunday, Fireworks and Pride in Pembury and Scarecrow competitions
- The new Christmas Tree on the Green
- A new Carols on the Green event organised in partnership with the Churches and the School

## **OPEN SPACES COMMITTEE**

- Managing open spaces including the recreation grounds and football pitches, allotments, burial grounds, Village Green, Old Coach Road, War Memorial
- Our annual Community litter pick was another great success!

## **PLANNING & HIGHWAYS COMMITTEE**

- Reviewing all planning applications in the parish
- We appointed planning and transport consultants to help us object to the Hendy Motor Village
- We consulted with residents and responded to the TWBC Draft Local Plan
- Refurbishment of the bus shelter roof by Polley Close

## **FINANCE & HR COMMITTEE**

- Overseeing the Council finances and human resources function.
- Our internal and external auditors have again given us a clean bill of health to our accounts and governance arrangements

Final accounts will be made available at the Annual Parish Meeting on Thursday 30 April 2020 and will be published on our website.

# ANNUAL COUNCIL BUDGET 2020/21

Working for Pembury People



## TOTAL REVENUE BUDGET £281,064



**£224,791**  
80% of the budget comes from the domestic ratepayers in Pembury. The Parish Council does not receive any portion of business rates nor government grants.



**£37,223**  
13% of the budget comes from fees and services such as burials, advertising and sports pitch hire



**£19,050**  
7% of the budget comes from donations and grants for projects

## What it will cost Pembury residents per average Band D household?



**£97.02**  
per year

**£1.87**  
per week

**An increase of £3.16 per year or 6p per week compared to 2019/20.**

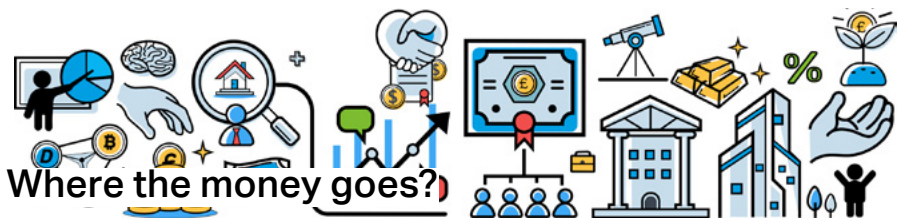
We save up some of our money for future projects in the same way you would. These are called "earmarked reserves". We get these reserves either by including them in the precept or by using any surplus at the end of the year. We also have a "General Reserve" as a contingency against future unknown occurrences. As the owner of several large buildings and a huge number of trees throughout the parish we cannot leave anything to chance. Below is a summary of the current reserves held:

**Total Earmarked Reserves** £27,092

**Ring-fenced reserve:** Donation to Pembury Scouts for disabled access to scout hut £3,214

**General Reserves projection at year end** £70,000

**TOTAL PROJECTED RESERVES AS AT YEAR END** £100,306



Where the money goes?

We maintain public open spaces and the play area in the village, which do not generate income as they are free for the public to use. We also organise free community events throughout the year. We will be starting work on a

Neighbourhood Development Plan and more details will be shared with you all throughout the year. Grants are available and we will be applying for these to cover as much of the cost as we can.

SERVICES £54K (NET COST £23K)	COUNCIL & ADMINISTRATION £103.5K (NET COST £100K)	OPEN SPACES £90K (NET COST £83.5K)	COMMUNICATIONS & EVENTS £27K (NET COST £18.5K)
Cemetery & burials £26k (net cost £9k)	Council Administration £83k	General open spaces costs £75.5k (net cost £72.5k)	Newsletter & communications £8k (net cost £0)
Allotments £4.5k (net cost £3k)	Council offices £10k (net £9.5k)	Floral Display £1k	Christmas Lights & Tree £13k
Streetlights & street furniture £3.5k (net cost £550)	Professional Fees £4.5k	Playground £9k	Competitions £255
Civic Amenity Lorry £1k	Loan & bank charges £4k	Old Coach Road £5k (net cost £1.5k)	Events £6k
Dog bins £3.5k	Grants & donations £2.5k (net cost £0)		
Neighbourhood Development Plan £15k (net cost £6k)			

If you have any queries or comments regarding the budget please contact **Helen Munro, Clerk, Pembury Parish Council, Lower Green Recreation Ground, Pembury, TN2 4DZ** or email [clerk@pemburyparishcouncil.gov.uk](mailto:clerk@pemburyparishcouncil.gov.uk).

Brought to you by Pembury Parish Council [www.pemburyparishcouncil.gov.uk](http://www.pemburyparishcouncil.gov.uk).