

PEMBURY

— brought to you by Pembury Parish Council —

VILLAGE NEWS

Summer 2021

Issue 186



FREE

CONTENTS

Chair's Report	3	Recipes – Vermont and Vanilla Ice Cream	28
Introducing new Councillor.....	5	Recipes – Summer Pudding	29
Kent High Weald Partnership	5/7	Aspens	30
Message from Greg Clark MP	9	Pembury in World War II	30
Small steps to normality	11	Guides/Brownies/Rainbows	31
Cricket underway!	13	My Allotment Plot	32
1 st Pembury Scout Group	15	U3A	33
Keep Kent Clean	18	Reminder of Hedge cutting law	34
Fly tipping	19	Pembury Panto	35
The next big thing...	20	Pembury Society	35
Seasonal Groundsman	20	Quiz	36
Community Grants	21	Responsible dog ownership	36
Goodbye and thanks to Alan Gaukroger	22	Bonfires – Advice from TWBC	37
Goodbye and thanks to David Reilly	22	Community Coffee Shop re-opens	38
Pembury Photos	23	Summer Wordsearch	39
A Neighbourhood Plan for Pembury – progress update	24/25	Crime Report / figures	40
Save the Dates	25	Paddock Wood Advice Centre	41
Hazeldene House	27	Village Organisations	42
Hospice in the Weald – Open Gardens	27	Your Councillors	43

PEMBURY VILLAGE NEWS

C/O Parish Council Office, Lower Green Recreation Ground,
Lower Green Road, Pembury, TN2 4DZ.

Distribution enquiries: Deputy Parish Clerk 01892 823193

Email: deputy@pemburyparishcouncil.gov.uk

www.pemburyparishcouncil.gov.uk

Pembury Village News is published four times a year by the Parish Council, but the views expressed in the magazine do not necessarily represent official council opinion or policy.

Please note: the Editorial team's decision is final on whether or not to publish any item submitted. They reserve the right to edit (that is to cut, précis, alter, correct grammar and spelling) any item published.

The Editor and Publisher, Pembury Parish Council, are not responsible for any opinions or comments made by contributors or advertisers in the Pembury Village News.

CHAIR'S REPORT

Welcome to the Summer edition of Pembury Village News. By the time this magazine reaches you hopefully you have been able to meet with friends inside, even had a meal at a pub or restaurant inside, and at the time of writing, with nearly 55 million doses of vaccination given, life is beginning to return to normal in some ways. We are hoping to have further easing of restrictions mid June, but these may well be impacted by the current spread of the Indian variant of the virus. Time will tell.....

I hope you are all looking forward to a summer of getting out and about, and staying local too! We've got our Annual Picnic on the Green scheduled for Saturday 4th September, and hopefully we will have another lovely September Indian Summer – the weather always seems to improve as the children return to school!! We then have the Fireworks event scheduled for November and Carols around the Christmas Tree including the lights switch-on scheduled for Friday 3rd December. Full details about all these events will be on the Parish Council website and Facebook pages.

We will be starting to look at front gardens for the Pembury in Bloom competition, there are some magnificent displays around the village already, and I can see many that are clearly works in progress and look forward to seeing them

bloom! Thank you to all for the effort you put into making Pembury look so fabulous.

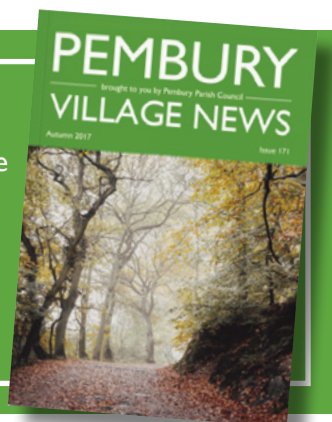
And finally, thank you to everyone that came to our Annual Parish Public Meeting at the beginning of May, it was such a shame that we couldn't meet face to face, and I am grateful to all of you that attended and also asked questions. I do hope you all found the meeting of interest, and you feel you know us and what we are doing for the village a bit better. You are always welcome at our monthly Parish Meetings which are usually held on the first Monday of the month. If there are any questions, concerns or opinions you want the Parish Council to answer or address, you can tell us at the Open Session of the meeting, and we can then listen to what you want to say, and if it's on the agenda the Council discuss it later bearing in mind your comments, and if it's not on the agenda for that meeting, we can add it to the agenda of the next, or relevant Committee. So please do come along if you want us to do something to make the village even better, thank you.

Kind regards
Katy



COPY DEADLINE FOR NEXT ISSUE

Any news items/articles/photographs for possible inclusion in the next issue of this magazine must be forwarded by **1st August 2021** to the Parish Office, Lower Green Recreation Ground, Lower Green Road, Pembury, TN2 4DZ; deputy@pemburyparishcouncil.gov.uk





Burtons Solicitors

Established for over 40 years in Kent.

01892 824577 pembury@burtons-solicitors.com

Tyled House, 23A High Street, Pembury, Tunbridge Wells, TN2 4PH



As a personable law firm we are able to get to know our clients and tailor our expertise to meet their requirements. Our excellent staff are approachable and easily available to our clients; looking after matters promptly and efficiently.

Our Services

Residential Conveyancing – Commercial Conveyancing – Family Matters

Equity Release – Elderly – Wills– Powers of Attorney – Probate

Debt Collection – Estate Planning



Burtons Solicitors is authorised and registered by the Solicitors Regulation Authority:

Also at: Suite 1, Peach Business Centre, 8 Chestnut Ave, Walderslade ME5 9LL -SRA No. 625445

INTRODUCING NEW COUNCILLOR... Graham Trueman

Pembury became my home around 13 years ago. It was the perfect place for me to have regular visits from my three sons who were aged 6, 8 and 10 at the time. We are very sporty and spent many hours on the recreation grounds kicking a football, shooting hoops and playing tennis.

In later years, my house has got even more chaotic with the arrival of my fiancée (on our 4th attempt to get married due to Covid) two more children and two bouncy dogs. Needless to say, the dogs love walking in the woods and for me, as a bit of a food, wine, and beer lover the local pubs have also been a big hit; my daughter even ending up working in one of them.

Since I came to Pembury, I have been actively involved in the Round Table raising money for charity whilst having lots of fun; I regularly try and play golf around Lamberhurst Golf Course, I love exciting new experiences and travel both in the UK and abroad, keeping fit, cooking and entertaining our family and friends with barbecues, wine, beer and perfecting our firepits.

Why join Pembury Parish Council? It may sound silly, but the Christmas lights were a turning point. I love Christmas and always add more decorations



to my house every year. When recently Pembury was not allowed to put up Christmas streetlights, it was so sad but then last year the display on the village green was awesome. It was just one of the many things that the council does to make Pembury so special. It really made a difference to me at a difficult time for us all. Hopefully I can help the Parish Council carry on making a difference - continuing to make Pembury a fabulous place to live.

KENT HIGH WEALD PARTNERSHIP

At the moment the safest place to be is in the great outdoors. Many local residents of Pembury have been getting out and about exploring the local woodlands, possibly for the first time.

Pembury Woods (or to give it its proper title - Marshley Harbour Woods), is a small but a wonderfully diverse habitat. Like many landscapes it has been shaped by the activities of man over many centuries.

At the end of the site closest to Ridgeway and Pembury Recreation Ground you will find a chestnut coppice. This is where chestnut trees have been felled and allowed to regrow. This

felling and regrowing, when done on a rotation, provides a constant source of wood for charcoal, fencing and building. Chestnut coppice woodland can be identified as it usually consists of lots of trees with multiple straight trunks coming from a single stump or stool. All the trees within a given area of a coppice or coop, as it is known, will be the same size as the trees would have been harvested at the same time.

Although a very familiar sight in Kent, chestnut trees are not a native species. They are naturalised. The Romans brought chestnut trees to this country to create a sustainable supply of charcoal to support the burgeoning Kentish iron



Caroline Milwidsky

The Reliable and Professional Service with the
Personal Touch

Accounting Bookkeeping Payroll and PAYE National Insurance Self Assessment
RTI Compliance Management Accounts Corporation Tax Budgets and cash flows VAT

???? How much time do you spend on your accounts rather than running your business ????

Not only can we prepare your annual accounts and deal with the tax, but we can also help on a day by day,
week by week, monthly or quarterly basis.

Our clients include Self Employed Sole Traders and Limited Companies across a wide
and varied range of businesses.

Contact: Caroline Milwidsky Tel: 01892 891220 - Mob: 07885 249968

Email: c.milwidsky@bteconnect.com



*J & D Francis
Plumbing and Heating*

- Commercial and Domestic Installation, Servicing and Maintenance
 - Natural Gas
 - Oil
 - LPG
- Bathroom Installations
- General Plumbing
- Emergency Breakdowns



James: 07584 284875

Daniel: 07775 851716

james.francis@jdfplumbing.co.uk



KENT HIGH WEALD PARTNERSHIP ... Continued

industry to keep the roman empire provided with the huge amounts of iron and steel it needed to pursue its aggressive foreign policies. Now it is grown for post and rail fencing, palling fencing and charcoal.

Coppicing not only provides a sustainable source of wood for many purposes, it also is a fantastic help to wildlife. The rotational clearance of an area decreases shade and allows dormant plants to grow. This creates more diversity on the forest floor which is good for a wide variety of animals and fungi. Many of our native songbirds prefer to nest in immature trees and so coppicing has been shown to increase bird populations compared to unmanaged mature woodlands. Other plants and animals exploit the new environments as the coppice grows up.

As you walk around the woods, compare the coppice woodlands to the great stands of conifers and decide for yourself which supports more species?

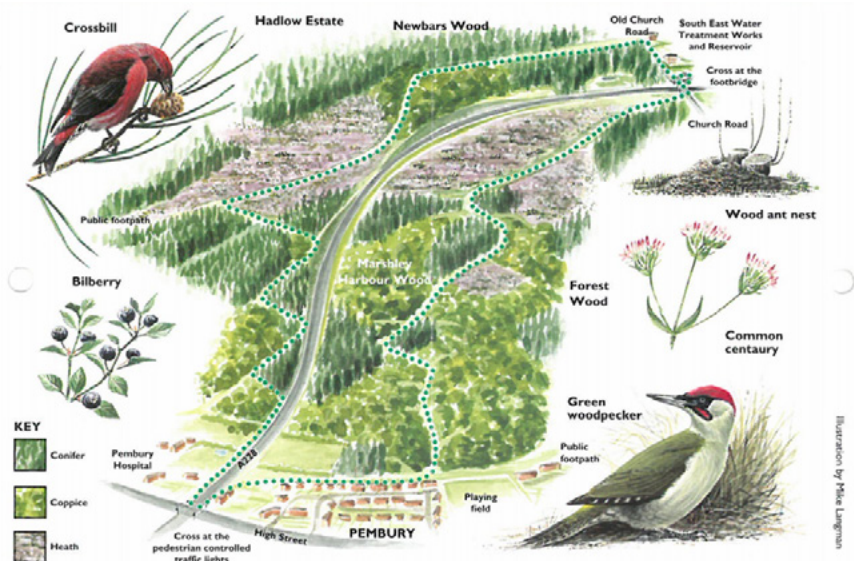
Also found on the site is native heathland. These are open areas with heather and bracken with a

mix of other plants. Heaths are a valuable part of the countryside. They have greater biodiversity than a similar sized area of woodland; they support all 6 species of British reptile; half of all British spider species are found in heathland; several rare species of butterfly, bee, wasp and bird species rely on heathland to exist.

Like coppices, heathlands are a man-made part of the landscape but far more ancient. Areas of heathland are where ancient man have cleared areas of the original wildwood for grazing and other resources vital for early settlers.

So now as you walk around your local woods just think for moment about how you are literally walking in the footsteps of people who helped shape the landscape thousands of years ago.

This article was written by Saul Fajerman, Pembury resident, who works for the Kent High Weald Countryside Management Partnership as a Forest School Practitioner and Trainer. For more information on your local green spaces go to <https://khwp.org.uk/> and <http://www.highweald.org/>





Dawn Hodgson MSSCh MBChA
Chiropodist

HCPC Registered - Home Visits

- Professional Advice and Friendly Care
- A Broad Range of Chiropody Services Available, Including:
 - Verruca Removal
 - Ingrowing Toenail Treatment
 - Fungal Infections
 - Corn Treatment and Removal
- Expertise in Diabetic Assessment & Maintenance

Day and evening appointments are available - Discount for the over-70s
Simply Health 50% refund - Police checked for your reassurance

T: 01892 824 916 M: 07761 583 756

E: dawn756@live.com

www.pemburychiropodist.co.uk

7 Greenleas, Pembury, Tunbridge Wells, Kent, TN2



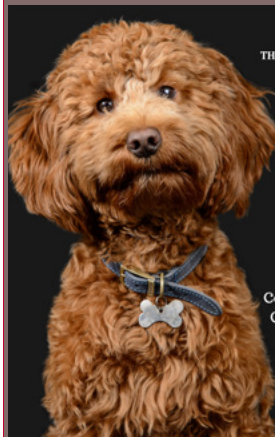
SCRUFFY PAWS

where your dog is treated like family

Follow us on Facebook for offers and to book online!



Scruffy Paws Dog Grooming



THE BEST DOG GROOMER IN TOWN!

Scruffy Paws is a professional & friendly dog groomer based in Pembury, specialising in small & medium dogs.

Contact: Harriot Sinclair
City & Guilds Qualified
Tel: 07739 184992



Book your dog in for a groom today - shiny coat & wagging tail guaranteed!



Pembury, Kent

personal touch computers

www.pt-c.co.uk

networking



Home and business IT

Up front costs, no unexpected hourly fees

security



Laptops/custom PCs

Wireless / ADSL / CABLE installs, helpful advice

reinstallation



Callouts available

Business hours / evenings and weekends

upgrades

Aaron Taylor 07545 996 410

email – aaron@pt-c.co.uk

PC/server builds

repairs

MESSAGE FROM GREG CLARK MP

None of us will ever forget the last year. The sudden arrival of a fatal disease - spreading rapidly and without a cure - was a shock. The consequences were heavy and painful - many people dead, our hospitals full, people unable to be with those closest to them at distressing times, and people's jobs lost and businesses closed.

Pembury has always had a special connection with our NHS - the Tunbridge Wells Hospital is still known as just "Pembury" to most people in our area. Many people who live in the village have worked at the hospital and others there come to the village to shop or to relax.

So we should be especially proud and grateful that the Pembury Hospital - which is to say the doctors, nurses and other staff there - responded so magnificently, working flat out in heart-rending conditions, saving many lives. It was fitting that a landmark documentary showing the NHS in action at the peak of the pandemic, recorded over the Easter weekend last year, was filmed by Channel 4 at Pembury.

Pembury should also be proud of the way the village sprung into action to help each other.

On the very day - the 23rd March - that the country locked down, the Pembury Volunteers was formed and the group was a lifeline in making sure people suddenly isolated were not forgotten but got the help they needed.

Whether it was helping elderly or shielding neighbours with their shopping, or collecting medicines from the chemist, or donating gifts and treats to the staff at the hospital or supporting food banks such as the one at the Pembury Baptist Church, this community came together.

These volunteers were joined by a host of other people who played their part in helping the residents of Pembury during the pandemic - care workers, GPs and their staff, teachers, emergency services workers, people working in our shops, bus drivers and bin men and so many more - all putting themselves at risk to keep us safe and provide essential services.

Pembury Parish Council and our borough and county councils all worked intensively in the community and effectively together to make sure there was a joined-up response.

During the last few months our healthcare staff and volunteers have shown again how dedicated they are by delivering the biggest and fastest vaccination programme we have ever seen. It has been a magnificent operation - and whether you were jabbed at the Masonic Hall in Tunbridge Wells, or one of the regional centres at Tonbridge or Ticehurst, or had a home visit, I imagine your experience, like mine, was of admiration and gratitude for everyone's hard work.

All this means that we can look forward to a summer of rebirth. All those village clubs and societies will, I hope, spring into life with over a year's worth of conversation to catch up on (though so many did so well keeping in touch with members by Zoom). What a pleasure to look forward to summer days of cricket again. And our pubs and other businesses really deserve our support - which I'm sure will be enthusiastically given!

Covid-19 may not be gone yet, and its impact will be felt for a long time, but I am more optimistic about the future than at any time since the pandemic began.

Over the years, I have come to know Pembury and Pembury people well and I have always known that there was something particularly distinctive and strong about this community.

In the long history of the village - which Mary Standen's wonderful book records going back nearly a thousand years - this last year will go down as a being one of the hardest Pembury ever experienced, but one in which there will always be pride in how the village cared for each other so well.

R Goode Plastering

All plastering & Rendering works

15 years experience Contact for free quote



1 Herons Way
Pembury TN2 4DH
Tel: 01892 319853 Mobile: 07900 907445
E-Mail: rgoodeplastering@hotmail.co.uk

Unlock your next move
with BarnesKingsnorth



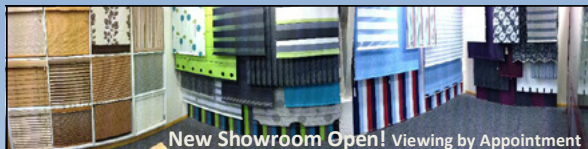
FOR LOCAL KNOWLEDGE AND
EXPERTISE, CALL

YOUR

PEMBURY AGENT

01892 822880

www.bkestateagents.com



New Showroom Open! Viewing by Appointment



THE BEST KEPT SECRET IN PEMBURY!

Penumbra Blinds have been Manufacturing & Supplying Internal Window Blinds & Curtains, External Awnings and Canopies to residential and commercial customers from our facilities on Romford Road since 1991!

Your truly local company for any of the following:-

- ◆ All types of Internal Blinds including the new Vision™ roller blind system
- ◆ External Blinds, Awnings, Canopies & Gazebos
- ◆ Solar Control & Security Window Films
- ◆ Friendly Service
- ◆ Expert Advice
- ◆ No Pressure Sales!

Visit us at the far end of Romford Road and find out why we've been here so long!



Tel: 01892 825522 E-mail: info@penumbrablinds.com

www.penumbrablinds.com

Unit 2 Albans Farm, Romford Road, Pembury, Tunbridge Wells TN2 4BB



SMALL STEPS TO NEW NORMALITY!

After a very odd year with Brownies on Zoom, there was great anticipation about the first face-to-face meeting for 1st Pembury Brownies.

The 12 brave Brownies who had stayed with the zoom meetings all year were the 'test subjects', to make sure our Risk Assessment was approved and that our Covid-safe meetings plans were actually practical. Thankfully all went well.

We had a lovely evening creating spring pictures as part of a challenge badge, and three Brownies – who had waited a year – finally got to make their promise at a campfire. Naturally, we toasted marshmallows and got smoky. It was fabulous!

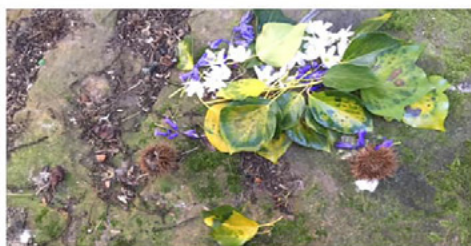
The following week we welcomed back all the Brownies who hadn't wanted to zoom, and later

in the term we hope to have girls from our waiting list join us too.

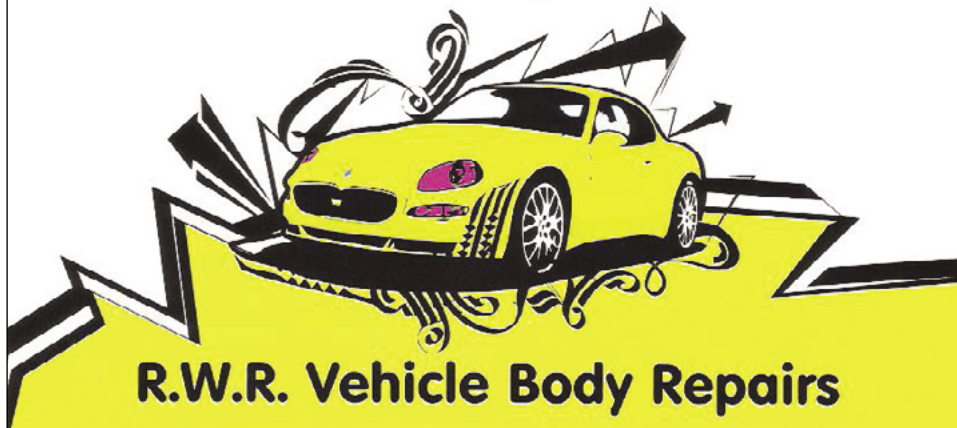
Small steps indeed – but hopefully things will continue to improve and face-to-face meetings will be able to continue. We hope the weather continues to be nice for our outdoor meetings until July, and maybe in September we can be inside. Fingers crossed.

If you have a daughter who would like to join Rainbows, Brownies, Guides or Rangers, please register your interest on the Girlguiding website: <https://www.girlguiding.org.uk/information-forparents/register-your-daughter/>

Moirá Allan, 1st Pembury Brownies



Call for a free no obligation estimate



R.W.R. Vehicle Body Repairs

30 Years experience with a personal professional and prompt
service at an affordable price

Trade Prices 07842122768

WESTWOOD BUILDERS

26 Westway, Pembury, Kent. TN2 4EX

Office 01892 325378 Mobile 07710 895598 E-mail; paulbuild444@gmail.com



Friendly Local Professional Builder, with over thirty years' experience.

Kitchens, Bathrooms, Loft Conversions, Extensions, Design Service Available.

Call for a no obligation quote.

CRICKET UNDERWAY!

As I type, the season has just got underway and we are looking forward to a more conventional summer/season than in 2020 as the league structures of both the Kent County Village League and Invicta Junior Cricket Leagues return to familiar formats.

Once again we will be fielding two senior league sides on a Saturday and have a full fixture list of friendly fixtures lined up on a Sunday.

We have another exciting summer lined up for the junior section as we have three competitive sides this season:

U15 – (Colts)

U13 – (Blue Caps)

U11 – (Steelers)

2021 also sees the return of the ECB Initiative “All Stars” to PCC. All Stars provides a fantastic experience for all children aged 5-8 years old. The programme is designed to introduce children to the sport, learning fundamental movement skills, including catching, throwing and batting. If you are interested, then please visit our website for further details.

We were certainly very humbled with the level of sponsorships that we received in 2020 from local business and supporters, particularly generous in these uncertain times. We are of course very keen to forge further links to help

us continue to evolve and indeed fulfil our ambitious plans for the Cricket Club, details of the various sponsorship packages we offer can be found via our website.

Fingers crossed for plenty of sunshine throughout the summer!

Richard Dawes (Club Captain – Pembury CC) – <http://pembury.play-cricket.com>



Like us on Facebook -
<https://www.facebook.com/PemburyCricketClub>



Follow us on Twitter -
<https://twitter.com/pemburycc>



Follow us on Instagram -
<https://www.instagram.com/pemburycricketclub>



COMPUTER REPAIRS

HOME PC'S • LAPTOPS • SERVERS
INSTALLATIONS • MAINTENANCE • BUSINESS NETWORKS

Free estimates provided within 24 hours.

Recently moved to new workshops in PEMBURY.

Ring or call in to discuss your requirements.

**NO FIX
NO FEE**

- MG Computer Services -

"A reputable company established in 1982 with experienced staff"

145B Hastings Road - Pembury - 01892 826130

HAVE YOU CONSIDERED ADVERTISING YOUR BUSINESS IN THE PEMBURY VILLAGE NEWS?

THE TOTAL COST FOR THE REMAINING
TWO EDITIONS IN 2021 ARE:

QUARTER PAGE - £122.50

HALF PAGE - £165

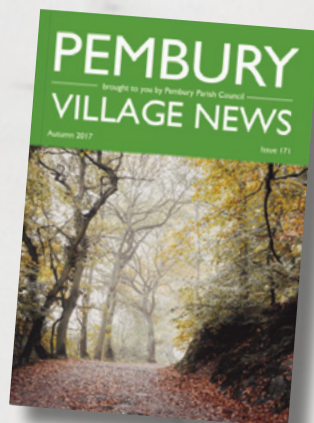
WHOLE PAGE - £250

INSIDE FRONT COVER - £295

FOR MORE INFORMATION

CONTACT US ON:

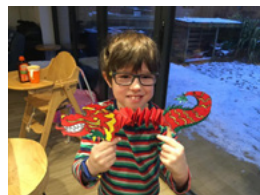
deputy@pemburyparishcouncil.gov.uk



On Sunday 25th April, the whole of Pembury Scout Group came together online to reaffirm their Scout promise as is traditional on St George's Day. With over 60 young people on Zoom it was a record for our group since we started 'Zooming' a year ago! Our young people were also invited to camp out in tents, or 'camp in' in a den inside to mark the occasion, which many did having great fun. Although all our Sections, from Beavers to Explorers, have been really active online throughout the last year, we are all now looking forward to meeting again face-to-face. We would like to thank them all and their parents, as well as all our section leaders, for their continued support.

Richard Alfieri, 'Alf' - Group Scout Leader

The Beavers once again had a jam-packed programme of Zoom events, including learning how to stay fit and healthy with exercises. We also learnt about Chinese New Year, making puppet dragons, as part of the International badge. We also learnt about Beaver colonies around the world, and we had a lot of fun learning an international dance from New Zealand, the famous Haka! The Beavers have also been learning what to do in an emergency, learning their addresses and how to dial 999 using different types of phone. We were lucky to have a Zoom visit from firefighter Nigel Dresman (also a Cub pack leader), who explained what his job involves and gave us a virtual online tour of his fire station and fire engine (very exciting) and taught us what to do in case of a fire. We were also fortunate to have a visitor from the Guide Dogs for the Blind to show us her puppy in training. It was very cute! We ended last term by making Easter baskets and conducting our first ever virtual Easter egg hunt at home.



In a particularly memorable moment, we invested three new Cubs on Zoom! Badgework has been the order of the term; budding Chefs cooked some amazing two-course meals, with 'sweet pizzas' and impressive 'sugar highs'! Fledgling artists learnt about some famous artists and their works and had a go at re-creating their own versions. The Cubs also tried soap carving, which was as messy as it sounds, but good fun and resulted in some excellent sculptures. For Easter, the Cubs made some salt dough cut-outs & decorated them to hang on an Easter

Tree at home. The Cubs have shown great resilience throughout this lockdown year and we are so proud of them all.

The Scouts have had a varied program of fun and informative activities, including map symbols bingo to learn about items on an OS map, cooking in the form of mug cakes and St Patrick's Day inspired pizzas, Morse Code learning and making an electronic machine to send messages across Zoom, Drawasaurus (ever popular online version of Pictionary), soap carving and games night. We have this week hiked from Hawkenbury to Pembury, so the summer term is starting to look more hopeful for more conventional scouting activities.



Pembury Explorers have resumed face-to face-meetings, thus far enjoying a hike and a campfire, including the obligatory singing of campfire songs ("sooo embarrassing!!!). They have also tidied up the compound, so younger sections have a place to meet clear of litter and brambles and created a huge log pile for everyone else to use for their own campfires. It's so good to be back!

Nina Welch

MIDLIFE COACH
FOR WOMEN



*Love who you are...
be excited about your future*

I CAN HELP YOU TO...

- prioritize self care.
- connect with who you actually are.
- recognize, confront and overcome the things that hold you back.
- grow your confidence, creativity and spirituality.



Believe in and invest in yourself

Book your **free discovery call**
on **07761 252062** or visit
www.ninawelchcoaching.com

Service - Install - Repair



DTH  **01892 824763**
Heating **07760 425099**

dth.heating@btinternet.com

Jane's Ironing Service

- COLLECTION & DELIVERY
- FAST TURNAROUND
- PROFESSIONAL & RELIABLE SERVICE
- WELL ESTABLISHED
- WEEKLY, FORTNIGHTLY & OCCASIONAL IRONING

**Quality Ironing at an
Affordable Price**

07872 824908

Phil's Kitchens



No need to change your whole kitchen.... Just do a kitchen refurb!

- Replace worktops with high quality worktops (many colours to choose from)
- Replace your sink/hobs/oven/ washing machine, dishwasher, cabinets, doors and handles
- Gas/Electric/Plumbing compliant
- Many happy customers in and around Tunbridge Wells

Phone Phil 07773723646



Steffan Keily

FOR ALL YOUR FENCING REQUIREMENTS

All types of fencing supplied and fitted
Close board, panels, palisade, post & rail, gates

FREE ESTIMATES FULLY INSURED

HOME: (PEMBURY) 01892 520150 MOBILE: 07941 138060



Pembury Dental Surgery

- New Patients Welcome
- Children seen under NHS
- Full range of preventative treatments
- Cosmetic dentistry (veneers, crown & bridgework)
- Tooth Whitening
- Implant Dentistry
- Digital x-ray
- Direct access to Hygienist
- Relaxing, friendly environment

Dr.Nelis du Plessis B.Ch.D.(Pret)
Emily Mann Hygienist

Address: 67 Hastings Road, Pembury, Tunbridge Wells, Kent, TN2 4JS
Tel: 01892 823044 - Email: info@pemburydentalsurgery.co.uk
Web: www.pemburydentalsurgery.co.uk

Committed to Quality Dentistry



**KEEP KENT
CLEAN**

**YOUR WASTE,
YOUR RESPONSIBILITY**

**FLY TIPPERS
GET FINED**



**NO EXCUSES.
YOU COULD GET AN
UNLIMITED FINE.**

**BEFORE YOU HIRE A WASTE
DISPOSAL SERVICE ASK:**

- for their Waste Carrier Licence
- where they dispose of their waste
- for a receipt or invoice



#KeepKentClean

Kent
Councils
Working
Together

Keep
Kent
Clean

FLY TIPPING

One of the very few good things to come out of lockdown is that it has given many of us the opportunity to explore our wonderful footpaths and walks along country lanes within the parish.

The downside has been the sickening sight of countryside vandalism in the form of fly tipping. Fly tipping, defined as 'the illegal deposit of any waste onto land that does not have a licence to accept it', is a serious criminal offence punishable by an unlimited fine or up to 5 years imprisonment.

It is a mystery to me why people pack their cars with rubbish, and then dump it in the countryside where it acts as a pollutant to flora and fauna, when we have a convenient and efficient Waste Disposal Centre on our doorstep.

The owner of any waste, rubbish, or even litter, is responsible for disposing of it legally. Small items that will fit into the boot of a car, can be taken to the Household Waste Recycling Disposal Centre on North Farm Road - for free!* Garden waste can go to the same place, also without charge. Larger items which come under the Bulk Waste heading and can be collected from your home by the Centre but are liable for a charge.

*At the time of writing, you need to book a time slot for the Waste Centre and there are certain restrictions which need to be followed. See details on <https://customer.bookingbug.com/?client=kentrecyclingcentres#/services>

If you have building works carried out at home and your builder is taking away the waste, it is your responsibility to ask to see their Waste Disposal Certificate. Only certified holders are permitted to take away waste and dispose of it in the correct manner. If you allow someone else to dispose of your rubble, it is your responsibility to ensure they are legally able to do so - otherwise, you can be fined! Ask to see their Certificate and take note of the details. If they do not have one, they are acting illegally but it is you who the police will pursue.

Disposing of your unwanted household and garden waste is easy if you follow the guidelines.

For more help and information, contact TWBC on 01892 526121 or email <https://tunbridgewells.gov.uk/bins-and-recycling/disposal-of-other-waste>

Cllr A Partridge



THE NEXT BIG THING

First Brexit – then Covid – now Planet Earth

Whether you read, watch or listen, there is a great deal of scientific information now available on climate change, with commentary from the youngest activist to the very oldest. Even so, our part as individuals in saving the planet is far from clear. Coping with Covid has taught us that a global problem, such as climate change, requires a worldwide approach to mitigate the worst effects – in which governments, corporations, communities and individuals work together.

Do you think sufficient progress is being made to reduce greenhouse gas emissions, at a fast enough pace? We see around us wind farms, solar panels, growing numbers of electric cars and progress with clean fuels like Hydrogen; coal fired power stations have been consigned to history in the UK (but not yet elsewhere), gas central heating systems are next in line for replacement. Meanwhile, emissions are still increasing.

Are you content to leave it to others; to wait for the outcome of the climate conference in November? How will you respond to the rising 'sea of troubles'? Our youngsters will certainly have ideas and suggestions - ask them. You may have already taken action on recycling. What more can we do – as individuals – as a

community? Please let us know. Let's share the best ideas and experiences.

What can Pembury do as a community? What should individuals do? What are you already doing? What extra help might be needed?

Please send your responses to the Editor at: deputy@pemburyparishcouncil.gov.uk

A summary of your suggestions will be published in the next PVN.

Future editions will include regular updates on local measures to combat climate change.

John Hawker



SEASONAL GROUNDSMAN

Early May saw Darren Bowen re-joining the Groundsmen's team for the third year running.

He will be working alongside Ryan and Darrell until late autumn. You will probably have seen him around the village in his distinctive green top grass cutting, litter-picking and anything else he's asked to do.

He's proved to be a real asset to the team, so we are all very pleased to have him back!



COMMUNITY GRANTS



Pembury Parish Council are running their community grant fund again this year! The fund is designed for Community Groups or not-for-profit organisations with their one-off projects. Last year we helped the Pembury Bowls Club and Pembury Football Club with improvements to their facilities. What could we help you with this year?

We have £1,000 to share to get your community project off the ground!

To apply

You must be a community group or not-for-profit organisation. Your project will be of benefit to the parish of Pembury or its residents.

Applications forms are available from the website www.pemburyparishcouncil.gov.uk or contact the Clerk for a copy on clerk@pemburyparishcouncil.gov.uk.

Deadline

All applications should be received by Monday 12 July 2021.



APPLY NOW!

THANKS AND GOODBYE TO ALAN GAUKROGER

On entering my first Parish Council meeting in 2016, I was beckoned into the room with a friendly wave and smile and an invitation to take the vacant seat next to Alan Gaukroger. We had time for quick introductions and then straight into the meeting.

From that evening, Alan became my go-to mentor for all things related to the Parish Council.

We worked together on the Planning & Highways Committee where he strove tirelessly to ensure that every application was given thorough and thoughtful consideration, explaining technical points to those less experienced and ensuring that all views were listened to before a decision was made.

Unflappable and with the right amount of gravitas, Alan led the Parish Council through often tricky planning applications and represented the Council at Borough level when necessary. He spearheaded the objection to the

Hendy Development and led the response to the Draft Local Plan which he was determined to complete before leaving us to move out of the area.

Alan supported all parts of the Parish Council and was happy to be a foot soldier when asked - he was responsible for the hand delivery of the Pembury Village News to Romford Road, possibly the longest road in the village!

All tasks were tackled with enthusiasm and a wickedly dry sense of humour and we could always rely on Alan and his wife, Pat, to supply a large amount of wit and knowledge at the Village Quiz.

We will truly miss Alan at the Parish Council, but wish him and Pat a long and happy 'retirement' in their new home.

Cllr. Annie Partridge

THANKS AND GOODBYE TO DAVID REILLY

We also say Thank you and Goodbye to David Reilly, who has been one of our Borough Councillors since 2016. David held a few roles as Borough Councillor; the Portfolio Holder for Finance and Governance, Chair of the Finance and Governance Cabinet Advisory Board, Vice Chair of Audit and Governance and also sat on the Planning Policy Working Group. His role as portfolio holder was to support the Borough Council through the provision of resources, assets, goods and assurance, a position he took over from Paul Barrington-King.

He spoke out about the behaviour of Council Leaders on social media, and the culture of bullying that had characterised the council. He pushed for honesty and transparency across the Borough Council, in particular regarding the Calverley Square project, and pressured the

Town Hall to appoint an external auditor to review rather than their internal auditor.

However, it was his love and passion for our village that was his greatest contribution. He fought against anything that would not be suitable for Pembury, and was particularly supportive of our objection to the Hendy application, as well working hard with our other Borough and County Councillor on the Local Plan to ensure Pembury had a housing allocation that was suitable and appropriate.

He always put Pembury first, regularly spoke at Borough Council meetings putting Pembury's views forward, and was always the voice of calm and reason in any debates! His sensible and practical advice has been a great steer for the Parish, and we wish him all the best for the future.



| Photos of the Old Coach Road by Ryan Lewis

A NEIGHBOURHOOD PLAN FOR PEMBURY – PROGRESS UPDATE

What you told us about Pembury...

Thank you to everyone who filled in our online survey about Pembury! We had a brilliant response with over 140 households telling us their views.



We asked you what you like most about living here and the overwhelming feedback was the village atmosphere, the friendliness of the local community and our beautiful rural setting, with over half of you mentioning these points. You also pointed to the good range of local facilities and amenities, with particular mention given to the school, local shops and the pubs. Our location too received a lot of attention, being well-placed to access the main road network as well as railway stations not too far away. Finally our extensive network of footpaths and twittens have clearly been heavily explored during the lockdown periods, as many of you wrote about these and the views and natural features that can be found en route.

Our second question looked ahead to the future, and what we might need to do to keep Pembury special and improve it further.

Perhaps unsurprisingly, there was a host of comments relating to traffic and car parking (or lack of). Lots of you asked for more to be done to reduce speeding, possibly introducing traffic calming measures, as well as discouraging cars from parking on pavements.

We also received lots of comments about the need for more activities and facilities, particularly for younger people in the parish – ideas included a café at the rec, resurfacing the tennis courts, an off-road bike track and skateboard area, as well as places for teenagers to meet safely.

Thinking of future growth of the parish, concerns were raised about making sure that any new housing meets local needs – for instance houses for those wishing to downsize, as well as affordable homes for those starting out on the housing ladder.

Prize draw winner : Congratulations to Ryan Bull whose name was randomly drawn from all those who completed the survey. Ryan has won a £25 voucher!

Developing a vision for the parish

Following on from the online survey, the Neighbourhood Development Plan Steering Group hosted an online interactive Visioning Event at the end of April. Again we had an excellent response from the local community with over 80 individuals and families registering to take part.

Thank you to those who made it on the evening – it's not easy having to use Zoom, and we look forward to a time (hopefully not too far away) when we can host an event in the village hall in person.

But in the meantime, the event was very successful and provided us with a lot of material to start developing a draft Vision and Objectives for Pembury that can be delivered by the Neighbourhood Development Plan – either through planning policies or by community actions and projects.

Thinking forward, how would you describe Pembury in 2036?



% of comments received by topic

Our interactive poll revealed some of the themes that those attending thought should be reflected in the vision for the parish. An inviting, diverse and friendly village set within a beautiful, safe and peaceful rural setting, with plenty of opportunities to walk and explore the woodlands and green spaces of the High Weald. It is these features that the Neighbourhood Development Plan needs to focus on, so that any future growth is well-managed, sustainably designed and contributes positively to what we have already.

Five workshops comprised an initial brainstorm on a particular topic, followed by discussions about some of the emerging themes.

For instance, on the local economy, the shift towards home-working led to a discussion about whether new houses should incorporate dedicated office space and whether there is a need for start-up flexible business units locally or shared co-working space. The idea of installing leisure features in the open spaces was floated, such as outdoor table tennis tables – alongside the café mentioned earlier – to appeal to workers during lunchbreak and the community more widely.

A report of the evening and summary of the next steps can be found at: <https://pemburyparishcouncil.gov.uk/neighbourhood-plan/>

A masterplan for Pembury and parish design guidance

One big aspect of the work is focusing on the potential site allocations that have been suggested in the emerging Local Plan. We have received free support from government to have some masterplanning work done around what those sites might look like, what could be delivered in terms of housing, community facilities and green spaces, and how they would connect to our existing footpath network and expand opportunities for cycling.

The work will also be exploring detailed local Design Guidance for Pembury, based on the High Weald Design Guidance, but setting out Pembury-specific detail that will need to be followed by future planning applications.

We will share more information about this work shortly.

What next for the Neighbourhood Development Plan? The Working Groups are busy exploring their topic area and we will be organising some more activities for you to get involved in.

If you would like to get more involved in the Neighbourhood Plan, or have any ideas you'd like to share, please get in touch with us at: ndp@pemburyparishcouncil.gov.uk or visit <https://pemburyparishcouncil.gov.uk/neighbourhood-plan>

Save These DATES

PEMBURY PARISH COUNCIL IS HOPING TO RUN
THE FOLLOWING EVENTS THIS YEAR!

Musical Picnic – 4 September

Fireworks – 5 November

Remembrance Day – 14 November

Christmas Carols – Christmas Light Switch On – 3 December

Louise Fitzgerald DipPFS EFA Independent Financial Adviser



Your local IFA providing **trustworthy advice**
with a personal touch

- £ Are you getting a good return on your **savings**?
- £ Do you need help mapping out your **retirement**?
- £ Are your loved ones **financially protected**?

- ✓ **FREE** of charge initial consultation - no cost, no obligation
- ✓ **Remote appointments** available - advice from the comfort of your own home
- ✓ **Independent** and whole of market

Get in touch

☎ 07891 039256

✉ louise@horlockholdcroft.co.uk

Horlock Holdcroft Financial Consultants Ltd. is authorised and regulated by the Financial Conduct Authority. FCA number 515774.



MadeleineS Accountants and Taxation Advisors

Tel: 07572 815474
www.mmadeleine.co.uk
davidandmadeleine09@gmail.com

Proactive · Approachable · Timely and Efficient Service

We offer a fixed fee service, catering to sole traders, partnerships, limited companies and charities.

With over 25 years of experience in both practice and industry, David has a wealth of experience as a chartered accountant.

As we emerge from the pandemic that has affected us all, it is about revival and not just survival and about building business back better for an improved quality of life as well.

Contact us to see if we may help you.

We provide an initial free consultation.

Our Services

- Preparation of Financial Statements for companies, partnerships, sole traders and charities.
- Preparation and submission of all related Corporation Tax Returns and Partnership Returns.
- Completion and submission of Personal Tax Returns.
- Provision of payroll services and associated advice.
- Assistance in completion of Vat returns and associated advice.
- Business start-up advice and assistance.
- Bookkeeping services (SAGE, Quick Books, Excel, IRIS, Making Tax Digital).
- Tax planning services (corporate and personal).

HAZELDENE HOUSE

At Hazeldene House we recognise how difficult this past year has been for the residents and relatives, with one lockdown after another, having long periods of no contact, and then when visits were permitted, they were done with screens in between the relative and their loved one.

All our relatives have been so supportive, whilst they have had to manage under these extremely difficult circumstances.

Therefore, when it was announced that as of 8 March 2021 the guidance was changing and relatives could re-start visiting, and at long last physical contact was possible, many relatives immediately arranged for these visits with their loved one.

The physical contact was hand holding, in PPE, as per this photo.

This photo was taken, and sent in with the consent of Sue Gidman, visiting her mother, Elsie Batcheler.



Sue has shared with me recently “as you know, I was used to seeing Mum every day but now, we have the new normal! Once a week - and lovely it is. One of the things that has kept me going and thinking positive is knowing that Mum is in the best possible place. I always feel that the staff care so much for her and me too”.

Thank you to Sue & all of our wonderful residents & relatives.

Allison Pettican
Home Manager

HOSPICE IN THE WEALD'S OPEN GARDENS ARE BACK THIS SUMMER!

With old favourites, and new gardens to explore, please come and join us as we celebrate being able to enjoy the outdoors. After a winter of lockdowns, visiting these beautiful gardens is a wonderful and COVID secure way of supporting your local Hospice whilst enjoying time with friends or family.

These events are held outside and will comply with all government guidance relating to COVID.

For a full list of gardens, and to book your tickets please visit hospiceintheweald.org.uk or contact Kathryn Cracknell, relationship fundraising co-ordinator, on 01892 820533.



VERMONT AND VANILLA ICE CREAM

If we are ever allowed to travel again and the USA is on your list, do try to get to Vermont. Known for its forested natural beauty, majestic green mountains which become world class skiing venues in the winter, 100 picturesque wooden covered bridges and, most of all, the home of the original Ben & Jerry's original ice cream factory!

An entrance ticket gives you a potted history of the company, a tour of the factory with samples, and, at the end, an opportunity to buy your favourite flavour from the sales hut outside. Every current flavour is available, so you won't be disappointed.



Ice cream is really easy to make. It can be made without a machine but is much more labour intensive. You don't need to buy a state-of-the-art machine - I use a basic model where I put the bowl in the freezer the night before I want to make the ice cream, attach the churner and, hey presto, I can guarantee the best ice cream you have ever tasted.

Please note: This recipe uses raw eggs. Don't worry, you cannot taste the egg at all, but to be on the safe side, you should use British Lion stamped eggs where the hens have been inoculated against salmonella. If at all unsure, speak to your health expert beforehand.

INGREDIENTS

2 large eggs.
150g caster sugar.
425ml double cream.
225ml whole milk.

1. Whisk the eggs in a bowl for 1 to 2 minutes until light in colour.
2. Whisk in the sugar a small amount at a time until it is all added then continue whisking until completely blended.
3. Add the cream, milk and vanilla extract and whisk again.
4. Pour into the chilled ice cream maker bowl and churn for approximately 20 minutes, or according to the manufacturer's instructions.

At this stage, the ice cream will be soft and ready to eat, or it can be poured into a plastic container and put in the freezer. Allow to soften for 20 mins once taken out of the freezer.

SUMMER PUDDING

By the time this edition arrives through your letterbox, we should be well into the start of summer and I thought what better time to feature one of our best-loved summer desserts, the Summer Pudding. Now, who would think of slapping pieces of day-old bread into a pudding basin and filling it with soft fruits - must have been one of Henry VIII's cooks surely? But no, the earliest reference I can find is in the Liverpool Training School of Cookery 1902 where it is named as the Hydropathic Pudding, which sounds more like a medical treatment than a dessert!



It seems this was a recipe for invalids with the bread casing being lighter than pastry or suet based puddings and was called 'hydropathic' because it was served in spas at the time. There are lots of recipes around but this one is easy and can be made anytime of the year using frozen fruit.

INGREDIENTS

1 bag (350g) frozen mixed fruits.
6-8 slices day old white bread - crusts removed.
60g sugar.

1. Line a medium size pudding basin with the bread slices, pressing it against the sides and overlapping each slice so there are no gaps. Save one or two slices of bread for the top.
2. Place the frozen fruit, sugar and a splash of water into a saucepan and warm over a medium heat until just below boiling point. Pour all the fruit and enough of the juice into the basin, up to the rim. Keep excess liquid to one side for pouring over any white patches when the pudding is turned out.
3. Fit the remaining bread across the top, pinching it together around the edge.
4. Place a large saucer on top of the pudding with a weight on top and pop in the fridge overnight. Try to use a saucer which connects with the pudding to apply slight pressure.
5. When you are ready to eat, remove the weight and saucer. Place a large serving plate on top of the basin and flip it over so that the pudding slips out of its mould. The juice should have seeped through the bread giving an all-round colour. Serve with pouring cream, creme fraiche or vanilla ice cream.

REWARDING CAREER OPPORTUNITIES WORKING FOR LOCAL CHARITY ASPENS

Hopefully you will have visited local charity Aspens at their Cornford Lane site for a cup of tea at their Bluebell Café, for a walk in their beautiful woodland or to buy a Christmas tree at their annual sale.

The social care charity has services across Kent, Sussex and Bexley and provides vitally needed care and support to children, young people and adults with learning disabilities, complex needs and those on the autistic spectrum.

Aspens currently has a wide range of flexible and interesting career opportunities at their Pembury site. Aspens' team members Kimberley and Ella describe what working for the charity is like:

"A typical day involves supporting the residents as they have their breakfast, followed by a morning activity such as going out for a walk or baking. Afternoon activities are usually quieter, such as doing a puzzle or catching up with family on Zoom. I love being a Support Worker for Aspens. The guys give you so much appreciation without fail. I've never had a job that's made me so happy, and I look forward to coming to work each day." (Kimberley, Aspens Support Worker)

"One of the best bits about my job is supporting someone to do something that they think they can't and then seeing their confidence grow. I love to see the people we care for improving their quality of life and becoming more involved

in activities they wouldn't normally do." (Ella, Aspens Community Support Worker)

If you are looking for a new job in a rewarding role, taking your next career step or just starting out after school or college, Aspens would love to hear from you. Contact the recruitment team at: recruitment@aspens.org.uk | 01424 773366 ext. 116 and view their current vacancies at: <https://www.aspens.org.uk/work-for-us>

Ruth Campbell
Marketing and Communications Manager



PEMBURY IN WW2

For some time now the Pembury History website has displayed a few maps of WW2 pillbox locations and falling bomb locations. Robin Kenworthy, an ex-resident now living in Staplehurst, has come forward with some fresh wartime information about the preparation of roadblocks around the parish should the enemy invade. This is now displayed on a new map on the same page as the pillbox data. If there are any Pembury residents with similar recollections

of the 1940 - 1950 period, please visit the website and get in touch. www.pembury.org/history/buildings-landmarks/wartime-constructions/

Most of the data on the history website has been compiled from the contributions of Pembury residents and ex-residents, not academics and scholars. All contributions will be duly acknowledged.

Tony Nicholls

GUIDES/BROWNIES/RAINBOWS

Woohoo! We are back to outdoor meetings. And it's not easy – there is a stack of paperwork to do and lots of hoops to jump through. But.... we volunteers do this because we love it and we love the young people who are part of our Units, and we want them all safe and sound.



Guiding and Scouting in this village, has always been strong - I remember it being that way when I was a Brownie and a Guide here myself.

Every leader who has met over the past few weeks will have had the cheesiest grin on their face as they welcomed their girls back. My team and I are no different!

The sun has shone upon us, even though the wind has been biting cold, and we have tripped the light fantastic as a result. Rainbows have considered 'Packing Problems' and 'Chattering Teeth' while working on Agility and Book Lover badges. Brownies played at 'Buddy Bingo' and 'Frogs in a Pond', while working towards Archaeology, Charities and Painting badges. Guides created beautiful tin can lanterns and worked their way through Easter Egg Escape Rooms!

The term is youngThe summer awaits And the world is potentially our oyster. Hikes and cook-outs, games and songs, learning and laughter, optimistic plans of nights away - the prospects for all of us are so exciting and so liberating.

A massive thank you to all the parents and girls who have stuck by us through these complicated times. Zoom meetings were fun but I'll be glad never to have to host another one!

Amanda Baker



MY ALLOTMENT PLOT BY CAROLINE MAZZEY

Welcome to the newest plotters and everyone hopes you stay for years. It would be interesting to work out how long individual allotment holders have had their plot and see how the statistics have changed over the last two years – what a transformation! I'm not gathering that data by the way, I've got better things to do!

At the end of April there was still a persistent wind from the North, and it had been like that for weeks and weeks. Plants generally hate wind. It kept the temperatures way down especially overnight. Nothing like last year, when it was midsummer by the beginning of April. The sunshine and my general impatience always make me get seed-sowing too early. I really ought to know by now!

The young plants get too big for their pots and trays and I just have to put them in the ground. Then it's too cold and they sulk or even die. Then I start again, halfway through May – which is when I should have started anyway....!

So that we can all share ideas and possibly more, a Facebook group has been set up called 'Pembury Allotment Friends', to which all plot holders old and new, are welcome to join. It might well become the place where we find spare plants when we lose all ours to the cold. Or slugs. Or pigeons.

In the last issue I said about how we can look after our soil. This is a photo of the bonfire site (not actually a dump at all) and if you are old enough to get the reference; in the words of the Olivia Newton John, "Don't throw it all away".

On the other hand, I guess anyone who needs topsoil doesn't need to buy any.

Caroline



"During my working career, my social life revolved around work and my work colleagues. Since retirement, the Pembury U3A has helped me to make new friends in the village where I live."

Such is the experience of many of our members: the U3A has so much to offer. There are well over 50 Interest Groups you can participate in, ranging from craftwork (woodwork, painting, crochet, quilting), through pastimes (bridge, crosswords) and music (ukulele, jazz) to more academic subjects (languages, history, poetry, science and technology), not to mention a whole lot of other things such as rambling and of course wine appreciation! In normal circumstances these groups meet in individual's houses in the Pembury area although, during lockdown, we have had to rely on Zoom.

In addition to the Interest Groups there are regular talks in the Village Hall as well as organised outings by coach, theatre visits and holidays too. (The photo shows a holiday in Jersey). Unfortunately, these things have had to be put on hold during the pandemic, but once we emerge from restrictions, we hope to set everything spinning into motion once again.



We'd really love to welcome some new members, maybe even people who'd like to join the Committee and help organise our activities.

Do, please take a look at our website: www.pemburyu3a.org or get in touch with our Membership Secretary, Rick Lawrence at: membership@pemburyu3a.org or the Chairman, Mike Cartwright at: chair@pemburyu3a.org

PEMBURY HISTORY

We all know that the Horse Trough on the Village Green was dedicated to Margery Polley who, in the year 1555 was executed at Tonbridge by the burning at the stake because of her religious beliefs and convictions. Margery, original name Margaret, came to Pembury when she was very young from Dartford with her parents Nan and Benjamin Marten in 1525.

They came to Pastheap Farm, Pembury to run the farm for the Culpeper brothers who actually spent very little time in Pembury but owned vast areas of land in Kent. It is stated that she was a very happy little child, but she also had to work very hard to help her family run the farm.

It was early in 1535 that her father died of a fever. Later that year she first met Nicholas Ridley and he will feature later in the story. There were two Culpeper brothers involved with the farm - one of them being Thomas who was the younger one. It was somewhat surprising that the Culpepers allowed Margery and her mother to stay at the farm, but they were provided with a farm bailiff by the name of Silas Beach whose young son John also assisted on the farm at busy times.

There was also another woman Joan Mitchell, who came to Pembury to look after her Grandmother and when she died, Joan lodged at Pastheap Farm with Margery and her mother. The Martens were very poor and could not have run the farm without the additional help.

Nan Marten's main interest however, was not in the farm but in religion. She was a saintly woman - given to good works and loved her nearest neighbours and it was to her that they went if they were in any trouble or needed any help. She made various potions from different plants and herbs which had cured many ailments suffered by the villagers. Margery was brought up in a very religious and Christian atmosphere and would say her prayers each night at her mother's knee. She learnt what she could of the scriptures, attended the 12th Century Village Church of St. Peter's and sung the Psalms which she had been taught.

Sadly, as we will find out in the next issue of the Village News, the country was in very dangerous times as far as religion was concerned.

Hugh Boorman

A REMINDER OF HEDGECUTTING LAW REGARDING BIRDS

Hedges require regular attention, but they are best cut from September to February - outside of the nesting season and less likely to disturb nesting birds. All UK birds are protected from harm under the Wildlife and Countryside Act 1981.

The RSPB website says:

"We recommend cutting hedges and trees is avoided between March and August as this is the main breeding season for nesting birds."

It is an offence under Section 1 of the Wildlife and Countryside Act of 1981 to intentionally take, damage or destroy the nest of any wild bird while it is in use or being built."

And gov.co.uk states:

"It's against the law to disturb nesting wild birds. Before you start to cut the hedge, check there are no birds' nests currently in use. To be on the safe side, trim hedges during the winter months when there is no danger that birds may be nesting."

To paraphrase the Wildlife and Countryside Act 1981:

"If any person:

- intentionally takes, damages or destroys the nest of a wild bird
- intentionally takes, damages or destroys the nest of any wild bird while that nest is in use or being built
- intentionally takes or destroys an egg of any wild bird
- intentionally or recklessly disturbs any wild bird while it is building a nest or is in, on or near a nest containing eggs or young; or disturbs dependent young of such a bird

They shall be guilty of an offence."

I have witnessed hedges being cut during nesting season and I saw a nest exposed last year. This nest was then easily predated; I saw the poor nestlings being carried off by a corvid. I'm sure this was unintentional, but exposing the nest was disturbing the dependant young of a wild bird, it resulted in the death of the nestlings, and clearly distressed the adult bird when they returned.



To be clear, you can cut your hedges whatever time of the year, but please try to do so outside of nesting season and please please please CHECK your hedges and trees thoroughly before cutting. If you observe your garden regularly you will know where there might be nests from the coming and going of the birds.

If you see someone preparing to cut where you know there to be a nest, let them know so they can avoid it, they may not know it's there. If they continue and damage the nest it is a criminal offence and a matter for the police and the local Wildlife Crime Officer (call 101), you can also contact the Investigations Unit at the RSPB on 01767 680551.

If you accidentally disturb a nest, the advice is to leave the area ASAP so the adult birds can come back and protect their young. If the nest is exposed you must cover it back up as best you can so it doesn't look disturbed and is protected from predators and the weather.

Thank you. Sarah Pomfrett

PEMBURY PANTOMIME



I was going to write a history of pantomime but, when I Googled it, it was so long-winded I thought you'd all be bored to tears!! Also, I thought, if you really wanted to know, you'd Google it yourself!

One thing I learnt was that the original pantomime, way back in the 16th century was just one person!

Personally, I only started doing panto in Pembury when my next-door neighbour asked me to make coffee for a group of friends who were rehearsing at her house. Waiting for the kettle to boil, I was asked to read in for an absentee and that was that. That was 40 years ago and every year since I've said "never again" but it's just good fun.

Four or five years ago we had two ladies come along; they were fairly new to the village and were looking for something to get involved in but didn't want to go on stage! They gave lovely performances as ladies of the harem, one was bitten by the acting bug and now performs regularly with Pembury Players and another company, the other didn't like the stage bit but liked the social aspect and is now our treasurer!

In 1981 Pembury Players had so many members, we even had crowds in our crowd scenes!

Nowadays, sadly, very few of the 6000 population of Pembury seem to want to be involved.

This year we're doing a new panto called 'The Pantomime Thief'. We've chosen this one because it has a very small cast and we're having to think outside the box with changing facilities and waiting in the wings in order to adhere to Covid regulations; it's going to be a challenge, but we'll get there.

Staging a pantomime isn't just about getting actors. We need prompts, painters, people to move scenery, publicity, ticket sales, bar and front of house - there's always something.

So, no matter how young/old you are why not come along and see what we do? We invariably end up in the pub for a wee dram before we go home!

Ring me on 07725009904 or email margaretweaver@hotmail.co.uk and I'll give you more details. Who knows, if we don't boost our membership soon, we'll revert to the 16th century one-person panto.....and it won't be me!

Cllr Maggie Weaver

THE PEMBURY SOCIETY

We look forward to being able to meet together again as regulations permit, and our next scheduled meeting will be in October – almost likely 6th October – but date and speaker(s) are to be confirmed.

As I write this, the Neighbourhood Development Plan is now being developed by the Parish Council with support from a number of groups and residents in Pembury. Some of us shared in a public meeting for an initial review led by professionals under the topics of Environment and Green Spaces, Transport, Community Facilities, Employment and Economy, and Housing and Heritage. We learned about the process of gathering facts, considering policies to address objectives, including potential development sites, and about examining and engaging on emerging policies for inclusion in the Plan, including necessary consultation.

The Society Committee are seeking to constructively engage with the process – how Pembury could look in 2036 – 15 years from now – which should be of concern to all residents.

We probably all have at least one issue on our minds that simply does not go away, but what sort of "look" would we like to see in our village 15, 20 and more years away; what facilities would we like to see, and what are the priorities that we feel we should seek to bring to the table?

We shall be developing these issues and our thinking, and we hope that our members will contribute to this review. Our website gives further information, and we invite everyone to have a look.

Our website also has lots of information concerning the village, with links to many interesting places and topics. Buildings, historic maps, details of each locality of the village showing where shops and businesses were and the people that once owned them. Then go to the pictures of the past, people and places, and there are videos to be watched. A section of articles and reference material covers many topics of interest, particularly helpful for those researching back into time.

David Hanes
Chairman

QUIZ

1. What is Inspector Morse's Christian name?
2. What is the name of the purple Teletubby?
3. In what street do the residents of Neighbours live?
4. What is the first name of the actress who plays Dot Cotton?
5. What is the surname of the actor who played the Prime Minister in Yes Minister?
6. Who is the Muppets' drummer?
7. What is Rodney's wife's name?
8. What is Samuel Peyton Jones' occupation?
9. Where do the Simpsons live?
10. Mishal? What is the surname of the newsreader?



Rearrange the first letter of each answer to make a TV programme.

RESPONSIBLE DOG OWNERSHIP

As responsible dog owners we love, feed, exercise, socialise, chip + tag, vaccinate, treat for worms and fleas, seek veterinary care if injured or unwell, and clear up our pet's poo.

Unfortunately, not everyone is completing the final task of a responsible dog owner. Evidence is left on footpaths, pavements and fields where it can be trodden on or hung in colourful bags which are hooked onto branches or slung in brambles or simply dumped on the ground why ?? The unpleasant part has been done; the poo is in the bag it just needs to be put in a bin!!

BAG IT & BIN IT

Littering with poo bags is unsightly, whether they are biodegradable or plastic. The plastic when it eventually breaks down will add to the pollution of our soil and water with micro-plastic particles.

Alternatively in woodland areas, it is acceptable to STICK & FLICK into nearby undergrowth, where it won't cause offence. Also, a dog poo bag can be used to pick up and throw the poo into undergrowth, the contaminated bag can then be tied shut and pocketed for later disposal in a bin. Provided a dog is regularly wormed, leaving dog poo in the environment will not increase the potential worm burden of wildlife or farm animals. The poo will be consumed by dung beetles and slugs, and decayed by bacteria.

Please enjoy the companionship of your dog as you take your exercise in the wonderful open spaces around Pembury but please can everyone clear up after our canine friends.

'A fellow dog owner'



BONFIRES - Advice from Tunbridge Wells Borough Council

If you are determined to have a bonfire, here are some guidelines to minimise the risk of it becoming a serious nuisance:

- Choose the time and site for your bonfire carefully, taking notice of those living nearby;
- Never light a bonfire unless you are satisfied that the weather conditions and wind direction will mean that smoke will be carried away from your neighbours' windows and gardens. If it's misty or damp, the bonfire will smoulder and produce excessive smoke; if it's windy, smoke may blow into neighbouring properties and across roads; if the air is still, smoke will linger at low levels;
- Make sure that there is no laundry drying in neighbouring gardens;
- Only put dry material on the bonfire which will burn quickly and with the minimum of smoke;
- Compost or bury soft vegetable waste and grass cuttings, etc., which are difficult to dry;
- Never burn oily rags, rubber, plastics, foam, paint or such materials as they will produce heavy or pungent smoke;
- Never use flammable liquids such as oil or petrol to help start a bonfire.

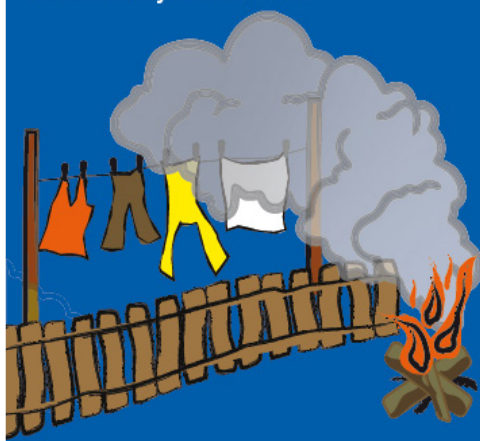
Remember – bonfires can be dangerous. Never leave them unattended. Do not even leave them when they are smouldering. Douse them with water if necessary. Fire can spread to fences or buildings and scorch trees and plants.

Let your neighbours enjoy their time off from work so do not burn at weekends or bank holidays.

Finally, bonfires may constitute a 'Statutory Nuisance' under the Environmental Protection Act 1990 and action may be taken against you in the Magistrates' Court which could result in a fine of up to £5000.

Bonfires can cause real annoyance and nuisance to neighbours and we strongly discourage them. The Environmental Protection Team receives many complaints every year from members of the public who are upset by smoke from bonfires thoughtlessly lit by their neighbours. Unpleasant smells and ash deposits can ruin your neighbours' washing and spoil their enjoyment of their houses and gardens. Smoke can also be very distressing, especially if the victim suffers from asthma or similar conditions.

Before you light a bonfire, ask yourself is it really necessary? Most garden waste can be composted and will provide valuable humus for the garden. Waste material should be recycled or disposed of at your nearest civic amenity site (North Farm Household Waste Tip) or placed in the garden waste bin if you have one.





The volunteers at the Community Coffee Shop are pleased to announce that we will be re-opening on:

Monday 5th July 2021
9:30am – 12:00

at Pembury Pavilion, Recreation Ground, Lower Green Road

It's been a long wait! New and familiar faces are welcome to join us for a cuppa and home-made cakes – the kettle will be on and we can't wait to see you!

LOCKDOWN PROJECT



Sent in by Nicola King

Following a request in the last Pembury Village News for people to share their lockdown projects, Nicola sent in the following and I'm sure you will agree that this is fantastic!

"Having never been particularly interested in arts and crafts, my new-found skills have surprised me during lockdown. I have thoroughly enjoyed learning the skill of quilling (something which I first remember dabbling in as a child) and have also been creating pastel pictures following the works of Art Arena on Youtube. Here is my proudest quilling creation."

SUMMER WORDSEARCH

W	F	S	U	B	E	A	C	H	S
A	C	O	C	K	T	A	I	L	U
T	A	N	P	U	G	L	O	E	N
E	H	T	Y	A	D	I	L	O	H
R	A	S	P	B	E	R	R	Y	A
M	M	U	A	T	T	Y	J	K	T
E	M	N	R	W	R	G	S	Z	U
L	O	S	A	N	R	U	I	Q	S
O	C	H	S	D	R	V	Z	E	A
N	K	I	O	F	O	A	A	W	N
M	C	N	L	V	T	S	Q	B	D
A	E	E	K	K	I	H	J	B	S
M	E	A	X	D	G	W	P	Q	B
K	M	A	E	R	C	E	C	I	S

See if you can find
the following:

Watermelon
Raspberry
Sunshine
Parasol
Holiday
Icecream
Seaside

Surf
Hammock
Tan
Beach
Sunhat
Cocktail
BBQ



Quiz answers

Answers: 1. Endeavour; 2. Tinklywinky; 3. Ramsay; 4. Molly; 5. Eddington; 6. Animal; 7. Cassandra; 8. Fireman; 9. Springfield; 10. Hussain.

MASTER CHEF

CRIME REPORT

By the time you receive this magazine we will be nearly halfway through the year but at least the gloom is beginning to lift and we must make sure that we do not go into reverse again because of impatience or foolish actions.

Let us also remember those whose lives will never be the same again. Let us not forget the wonderful efforts of the NHS staff and all those involved in trying to keep us all safe and comfortable in the virus crisis.

I have again been requested by the Police to highlight the threat posed by those evil persons operating scams of various descriptions to rob people of their bank account details etc., or claim alleged monies are owed.

We ourselves received a parcel from a relative delivered by the Royal Mail only to receive a text two days later stating that we had not been charged enough for the delivery and to supply the information from which they could extract the alleged amount outstanding. However, a quick call to the Royal Mail quickly quashed that.

However, the good news is that the crime figures for the last quarter have gone down by 25 per cent but what is alarming is that the figure for Violent Crime has risen from 26 to 45 and I do not have any details as to whether they were drink or domestic related. However, Criminal Damage has gone down from 17 to 12 and Theft Offences excluding vehicles have gone down from 18 to 7. Other offences have gone down from 32 to 5. There are several other little reductions and let us hope we can keep it that way.

Let us do all we can to keep the children back at school and start to rebuild their future and let us hope that common sense will prevail and that we can return to 'normal' but please keep an eye open for anyone you know who may be vulnerable to any of these scams.

Be careful out there, keep your eyes and ears open and let us be on the winning side. I would love to see a much lower figure next time.

Hugh Boorman.

Crime type by reported month (PEMBURY WARD)	Violent Crime	Burglary-Business and Community	Burglary Residential	Theft of a motor vehicle	Theft from a motor vehicle	Theft Offences (exc vehicle offences)	Criminal Damage
Jan-21	13	1	0	0	1	2	2
Feb-21	17	1	0	0	1	3	6
Mar-21	15	0	1	1	0	2	4
Jan to Mar 21	45	2	1	1	2	7	12

Total recorded crime						
	Pembury	Capel	Goudhurst and Lamberhurst	Brenchley and Horsmonden	Sherwood	Park
Jan-21	21	5	7	31	54	41
Feb-21	31	3	15	18	36	41
Mar-21	23	3	15	18	56	41
Jan to Mar 21	75	11	37	67	146	123

PWAC MONEY & HELP

Have your finances been affected by coronavirus? Perhaps you are worried about how you will pay your rent or you need help budgeting? You might be threatened with bailiffs, court action or homelessness? Or maybe you simply want to feel more in control of your finances? Our five-step guide can help:

Step 1 - Reach out to someone and talk about your worries

Step 2 - Gather information about your debts

Step 3 - Get debt advice online, by telephone or in person

Step 4 - Talk to your creditors, particularly if your mental health is affected

Step 5 - Start to put together a budget

How can we help?

Our experienced advisers are available to provide free, confidential and impartial advice in relation to money and debt.

We can sit down with you and draw up a financial statement using income and expenditure figures supplied by you. We can advise you how to budget. Where appropriate we can discuss options including bankruptcy, debt relief orders, debt management plans, administration orders, debt consolidation and Individual Voluntary Arrangements (IVAs). We can also advise you on whether you can access benefits or grants to increase your household income.

We are open for telephone and video appointments or email advice. We are now offering face-to-face advice (appointments and drop-ins) Monday to Friday, 9:30 – 1:30. If you need advice about budgeting, rent arrears, credit card debts, bailiffs, court action or anything else, get in touch on:

Paddock Wood Community Advice Centre
94 Commercial Road Paddock Wood TN12 6DP
info@pwadvice.org | 01892 838619

DEBT RESPITE SCHEME 'BREATHING SPACE'

What is Breathing Space?

The Government introduced a new Debt Respite Scheme on 4 May 2021. The scheme gives eligible people with problem debt, including those experiencing mental health problems, legal protection from action by their creditors for a period of time, known as 'Breathing Space'.

How does it work?

There are 2 types of breathing space: a standard breathing space and a mental health crisis breathing space. A standard 'breathing space' is available to any client with problem debt. It protects them from creditor action for up to 60 days, pausing most enforcement action or contact from creditors and freezing most interest and charges on their debts. A mental health crisis 'breathing space' is only for clients who are certified by an Approved Mental Health Professional.

Can anyone access Breathing Space?

The scheme can only be accessed through a debt advice provider, which has been authorised

by the Financial Conduct Authority (FCA) to provide debt counselling. We are registered with the FCA and the Insolvency Service to put people into the scheme. We have experienced debt advisers ready to help you.

How do I get help?

Our offices are OPEN and we are offering face to face advice (appointments and drop-ins) Monday to Friday, 9:30 – 1:30. We are also offering telephone and video appointments or email advice if you are unable to attend our offices. If you need advice about the 'Breathing Space' scheme or anything else, contact:

Paddock Wood Community Advice Centre
94 Commercial Road Paddock Wood TN12 6DP
info@pwadvice.org | 01892 838619



VILLAGE ORGANISATIONS

AGE CONCERN	Mrs Sandra Springett. Tel: 522591
AMBERSIDE DANCE STUDIO	Principal: Sadie Van Der Spuy. Tel: 07734 053509. www.360dance.co.uk
ASPENS (FORMERLY PEPENBURY)	CEO – Robert Shanahan. Tel: 01892 822168
CATHOLIC CHURCH	Fr. Ed Tomlinson. Tel: 825009
CONSERVATIVE PARTY	Sue Nuttall. Tel: 01892 822776. Email: sue_nuttall@tiscali.co.uk
FRIENDS OF PEMBURY PARISH CHURCH	Chairman: Mrs S. Clarke, Little Stanton, Romford Road. Tel: 823932
GUIDES, BROWNIES AND RAINBOWS	Caroline Cooper. Email: pemburydistrict@btinternet.com
HOSPICE IN THE WEALD	Maidstone Road. Tel: 820500
KENT COLLEGE	Headmistress: Ms J. Lodrick. Tel: 822006
KENT COLLEGE PREP SCHOOL & NURSERY	Headteacher: Mr N Pears. Tel: 820204
LIBERAL DEMOCRATIC PARTY	David Mills. Tel: 825577
LITTLE RASCALS	c/o PBC Office. Tel: 825590
MULTIPLE SCLEROSIS SOCIETY	TW District. Tel: 0845 6037882
NATIONAL FEDERATION OF THE BLIND, UK	Michael Coggles. Tel: 822705
NEIGHBOURHOOD WATCH	Janet Ditchett. Tel: 822586
OUT AND ABOUT CLUB	Sue Giles. Tel: 823318
PEMBURY ATHLETIC (YOUTH) FOOTBALL CLUB	Alban Poulson. Tel: 822919 / 07748680071
PEMBURY BAPTIST CHURCH	Church Office. Tel: 825590
PEMBURY BOWLS CLUB	Phil Griffin Tel: 823129
PEMBURY BRIDGE CLUB	Geoff Plummer. Tel: 824652
PEMBURY CHILDMINDER'S CO-ORDINATOR	Sam Knight 07793066471 mrssam.knight@btinternet.com
PEMBURY CRICKET CLUB	Secretary/Treasurer: Andy Weaver, 51 Heskett Park Tel: 824362
PEMBURY DAY CENTRE	c/o PBC Office. Tel: 825590
PEMBURY FOOTBALL CLUB	Saturday Secretary: Michael Brown 327480 Sunday Secretary: Phil Craxton 823928 Chairman: Andrew Rice-Tucker 823195
PEMBURY GARDENERS' SOCIETY	Ann Purton. Tel: 824223
PEMBURY WALKING CLUB	Martin Bolt. Tel: 07769707061
PEMBURY PAVILION BOOKINGS	Gillian Mayrick. Tel: 824852
PEMBURY PLAYERS	Maggie Weaver, Chair of Pembury Players. Tel: 824362
PEMBURY SCHOOL	School Office. Tel: 822259
PEMBURY SCHOOL ASSOCIATION	Chair: Theresa Mason. email: psa@pembury.kent.sch.uk
PEMBURY SCHOOL HOUSE NURSERY	Teacher in charge: Rachel Teigen. Tel: 825580
PEMBURY SHORT MAT BOWLING CLUB	Arthur Storey. Tel: 822509
PEMBURY SOCIETY	Chairman: David Hanes. Tel: 823174
PEMBURY U3A	Rick Lawrence. email: membership@pemburyu3a.org
PEMBURY UPPER AND OLD CHURCH	Vicar: Rev. Richard Worssam / Church Administrator – 711126
POLICE COMMUNITY SUPPORT OFFICER	PCSO Nick Brown. Tel: 07772 226001 Email: nicholas.brown@kent.pnn.police.uk
ROTARY CLUB OF SOUTHBOROUGH & PEMBURY	Secretary: Nigel Stratton. Tel: 822936
ROYAL NATIONAL LIFEBOAT INSTITUTION	Peter Chartres. Tel: 823759
SCOUTS, CUBS AND BEAVERS	Richard Alfieri. Email: sturgeoncubspembury@gmail.com
ST. ANSELM'S CATHOLIC CHURCH	01892 825009
ST. ANSELM HALL ENQUIRIES	Janet Ditchett. Tel: 822586.
ST. PETER'S MOTHERS' UNION	Secretary: Tina Walters. Tel: 822545 (after 4pm)
TABLE TENNIS CLUB	John Burleton. Tel: 823250
THE ALLIANCE	3 Stanam Road, TN2 4LD
THE ORDINARIATE OF OUR LADY OF WALSINGHAM	Fr. Ed Tomlinson, 31 Henwoods Crescent. Tel: 825009
TOWN & COUNTRY (High Weald Housing)	Housing manager: Stephen Aspinall. Tel: 0845 8731 321
TREE WARDEN	Hugh Boorman. Tel: 823068
TUNBRIDGE WELLS ACCESS GROUP	Gill Pavely. Tel: 822605
TUNBRIDGE WELLS & DISTRICT VICTIM SUPPORT SCHEME.	Tel: 513969
VILLAGE HALL	Manager (bookings): Tel: 07983 228181
WOMEN'S INSTITUTE	Evening: Mrs Gillian Williamson. Tel: 01892 822 577 Email: pewisecretary@gmail.com Web: pemburyeveningwi.wordpress.com

YOUR COUNCILLORS



Cllr Katy Brooks

Chair of Pembury Parish Council, Vice-Chair of Finance & HR Committee, Member of Planning & Highways Committee, Member of Open Spaces Committee, Member of Communications & Events Committee
katy.brooks@pemburyparishcouncil.gov.uk



Cllr Joe Pearce

Member of Finance & HR Committee
 Member of Planning & Highways Committee
joe.pearce@pemburyparishcouncil.gov.uk



Cllr Heather Eastoe-Kirby

07801 274778
heather.eastoekirby@pemburyparishcouncil.gov.uk



Cllr Susan Sharp

Vice-Chair of Communications & Events Committee
 Member of Open Spaces Committee
 01892 823040
susan.sharp@pemburyparishcouncil.gov.uk



Cllr Patrick Gillan

Chair of Open Spaces Committee, Member of Planning & Highways Committee, Member of Communications & Events Committee
 01892 825324 07747 002766
patrick.gillan@pemburyparishcouncil.gov.uk



Cllr Christine Snow

Vice-Chair of Open Spaces Committee
 Member of the Neighbourhood Development Plan Working Group
 1 Cornford Park | 01892 825428
christine.snow@pemburyparishcouncil.gov.uk



Cllr Graham Hall

Chair of Planning & Highways Committee
 Member of the Neighbourhood Development Plan Working Group
 Ashcroft, 38 Lower Green Road | 01892 822689
graham.hall@pemburyparishcouncil.gov.uk



Cllr Nigel Stratton MBE

Chair of Finance & HR Committee, Member of Planning & Highways Committee, Chair of the Neighbourhood Development Plan Working Group
 01892 822936
nigel.stratton@pemburyparishcouncil.gov.uk



Cllr Louise Mills

Chair of Communications & Events Committee
louise.mills@pemburyparishcouncil.gov.uk



Cllr Graham Trueman

Member of Communications & Events Committee



Cllr Annie Partridge

Vice-Chair of Pembury Parish Council
 Vice-Chair of Planning & Highways Committee
 Member of Finance & HR Committee
 Member of Open Spaces Committee
annie.partridge@pemburyparishcouncil.gov.uk



Cllr Maggie Weaver

Member of Open Spaces Committee
 Member of Communications & Events Committee
 01892 824362
 07725009904
maggie.weaver@pemburyparishcouncil.gov.uk

Clerk to Pembury Parish Council

Helen Munro

c/o Parish Council Offices, Lower Green Recreation Ground
 Lower Green Road

Pembury, TN2 4DZ Tel: 823193

Email: clerk@pemburyparishcouncil.gov.uk

Deputy Clerk to Pembury Parish Council

c/o Parish Council Offices, Lower Green Recreation Ground
 Lower Green Road

Pembury, TN2 4DZ Tel: 823193

Email: deputy@pemburyparishcouncil.gov.uk

BOROUGH COUNCIL

Cllr Paul Barrington-King, 57 Henwood Green Road, TN2 4LH Tel: 07899 731696

Cllr David Hayward, 3 Stanam Road, TN2 4LD Tel: 01892 808000

Cllr Paul Roberts, 107 Beagles Wood Road, TN2 4JJ Tel: 01892 822602

COUNTY COUNCIL

Cllr Paul Barrington-King, 57 Henwood Green Road, TN2 4LH Tel: 07899 731696



AJ SERVICES

ROOFING & PAINTING

**New Roofs • Flat Roofs • Rubberised Sealant
Roof Repairs • Ridge Tiles • Chimneys Rebuilt
Repointing • Fascias & Soffits • Guttering
Downpipes • Dry Verge Systems
Interior & Exterior Painting**



**Home: 01892 231 777
Mobile: 07884 298 951**

www.ajservicesuk.co.uk | ajservices3@outlook.com