



After an unprecedented year in 2020, we were able to begin to return to normal and managed to hold many of our usual events again! We have had another busy year maintaining our facilities and delivering services to the village. Here is a snapshot of our work this year:

FULL COUNCIL

- We sadly said goodbye to Alan Gaukroger, Susan Sharp, Heather Eastoe-Kirby and Annie Partridge who served as councillors for 6½, 6, 3 & 5 years respectively.
- We also welcomed David Reilly and Jon Webster to the Council in 2021/22. David sits on the Planning & Highways, Open Spaces and Finance & HR Committees. Jon sits on the Planning & Highways Committee.

COMMUNICATION & EVENTS COMMITTEE

- The Pembury Village News - delivered to every house in the village
- We held the Picnic on the Green, Fireworks, litter pick and Carols on the Green events and Pembury in Bloom and Scarecrow competitions in 2021.
- Our Christmas Lights display, and Christmas Tree were well received.

OPEN SPACES COMMITTEE

- We continue to manage the Lower Green Recreation Ground, Woodside Playing Fields, Henwood Green Road allotments, burial grounds, Village Green, Old Coach Road, War Memorial and other open spaces in the village.
- We have seen a large increase in burial enquiries which has had a big impact on staff workload.

PLANNING & HIGHWAYS COMMITTEE

- The committee meets monthly and reviewed and responded to over 75 planning applications in the year.
- The Committee met residents about their concerns about rat running from the A21 and continue to lobby Greg Clark, MP, KCC and National Highways for a solution.
- We have arranged 3 speed surveys in the village to gather evidence of the problem. Once we have the relevant data, we will consider the next steps.

NEIGHBOURHOOD DEVELOPMENT PLAN

- Volunteers have worked hard on various projects throughout the village and the Draft Plan is almost complete.

FOOTPATH WORKING GROUP

- Volunteers are progressing with the new design of footpath map which will include historic information and details of how accessible the footpaths are.

CLIMATE CHANGE WORKING GROUP

- A wildflower meadow has been created and new trees planted to help with biodiversity.
- The working group has recently been set up to assess the carbon footprint of the parish council.

FINANCE & HR COMMITTEE

- The Finance and HR Committee oversees the Council finances and Human Resources function.
- Our internal and external auditors have again given us a clean bill of health to our accounts and governance arrangements once again.

ANNUAL COUNCIL BUDGET 2022/23

Working for Pembury People



TOTAL REVENUE BUDGET £283,525



£243,625
86% of the budget comes from the domestic ratepayers in Pembury. The Parish Council does not receive any portion of business rates nor government grants.



£33,250
12% of the budget comes from fees and services such as burials, advertising and sports pitch hire



£5,300
2% of the budget comes from donations and grants for projects

What it will cost Pembury residents per average Band D household?



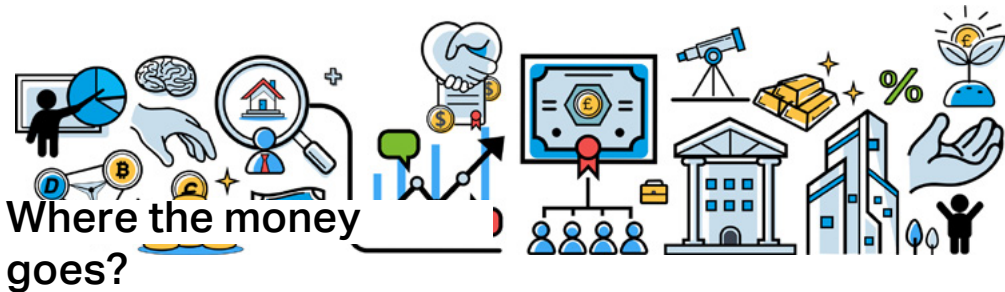
£106.11
per year

£2.04
per week

An increase of **£5.05** per year or **10p** per week compared with 2021/22.

We save up some of our money for future projects in the same way you would. These are called "earmarked reserves". We get these reserves either by including them in the precept or by using any surplus at the end of the year. We also have a "General Reserve" as a contingency against future unknown occurrences. As the owner of several large buildings and a huge number of trees throughout the parish we cannot leave anything to chance. Below is a summary of the current reserves held:

Total Earmarked Reserves	£30,997
Ring-fenced reserve: Donation to Pembury Scouts for disabled access to scout hut	£3,214
Covid-19 Hardship Fund	£1,908
General Reserves projection at year end	£80,057



Where the money goes?

We maintain public open spaces throughout the village as well as the play area in the Rec, which do not generate income as they are free for the public to use. We also organise various free community events throughout the year and provide the

Christmas lights display on the Village Green. We have been working on our Neighbourhood Development Plan and the draft plan is almost ready to go out for public consultation.

SERVICES £45K (NET COST £23.5K)	COUNCIL & ADMINISTRATION £127K (NET COST £126K)	OPEN SPACES £95K (NET COST £86K)	COMMUNICATIONS & EVENTS £20.5K (NET COST £8.5K)
Cemetery & burials £27k (net cost £9k)	Council Administration £92k (net cost £91k)	Building costs £6.5k (net cost £6.5k)	Newsletter £7k (net cost £2k)
Allotments £3.5k (net cost £2k)	Council offices £8.5k	Open Spaces £84k (net cost £79k)	Christmas Display £6.5k
Streetlights & street furniture £3k	Professional Fees £2k		Events / Competitions £7k (net cost £4k)
Planning & Highway Costs £2.5k	Loan & bank charges £4k		
Dog bins £3.5k	Grants & Donations £3k		
Neighborhood Plan £5k (net cost £3k)	Reserves £18k (net cost £17k)		

If you have any queries or comments regarding the budget please contact **Helen Munro, Clerk, Pembury Parish Council, Lower Green Recreation Ground, Pembury, TN2 4DZ** or email clerk@pemburyparishcouncil.gov.uk.